

# FOR SALE or BUILD TO SUIT

## Glencoe - Grocery Anchored Outlot

2211 - 11th Street East  
Glencoe, MN 55336

### 2.68 Acres



# RICE

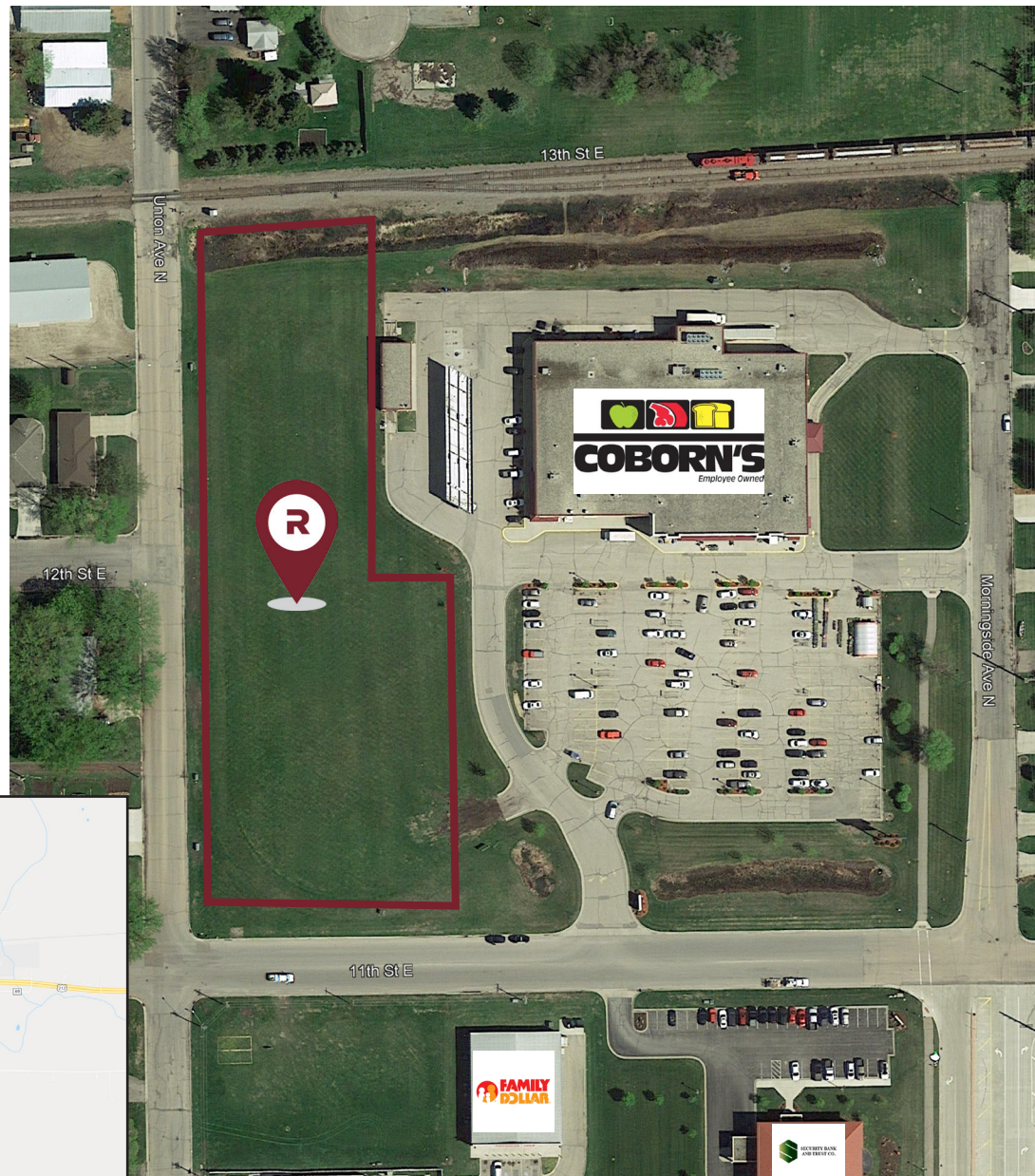
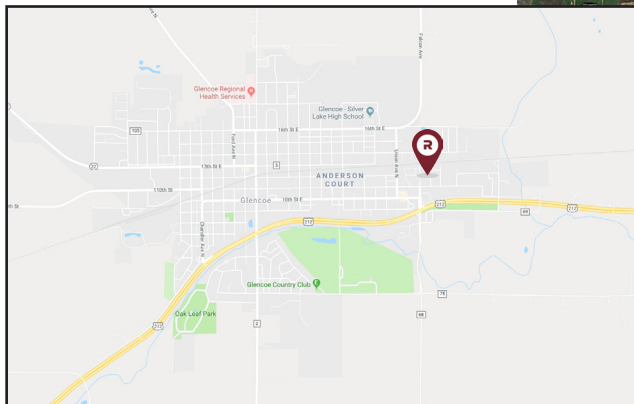
REAL ESTATE  
SERVICES

### GLENCOE - GROCERY ANCHORED OUT LOT:

Ready to build site located as Out Lot for Coborn's Superstore in Glencoe, MN. This 2.68-acre parcel is zoned commercial and may be divided.

Glencoe is located 50 miles west of Minneapolis/ St. Paul, where it enjoys a stable community with a great mix of industry and commerce. Current population is just under 6,000 people and median HH income is \$53,387 (2018).

Great investment opportunity and/ or perfect fit for office and retail users to be neighbors to an active retailer in a growing community.



## Sale Price: \$500,000 or \$4.28 psf

FOR ADDITIONAL  
INFORMATION,  
PLEASE CONTACT:

**CASEY O'MALLEY**  
PRIMARY BROKER | 320.260.6815  
casey.omalley@riceproperties.com



1019 Industrial Drive South,  
Sauk Rapids, MN 56379  
320.260.6815 | RICEPROPERTIES.COM

We obtained the information above from sources we believe to be reliable. However, we claim to make a guarantee, warranty or representation about such information. It is submitted subject to the possibility of errors, omissions, change of price, rental or other conditions, prior sale, lease or financing, or withdrawal without notice. You and your tax and legal advisors should conduct your own investigation of the property and transaction.

**FOR SALE or BUILD TO SUIT**

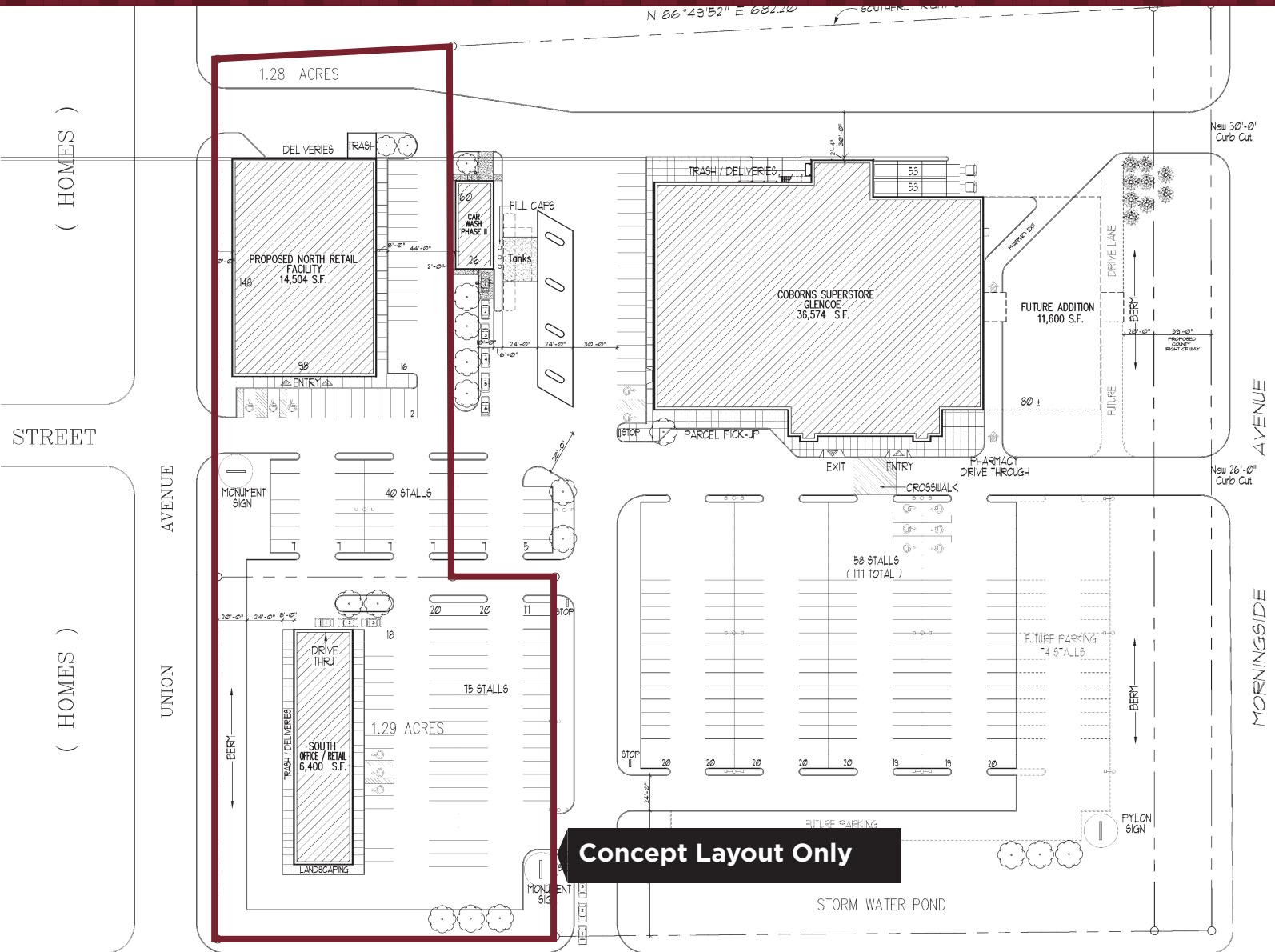
## Glencoe - Grocery Anchored Outlot

2211 - 11th Street East  
Glencoe, MN 55336

**2.68 Acres**



**RICE**  
REAL ESTATE  
SERVICES



**Sale Price: \$500,000 or \$4.28 psf**

FOR ADDITIONAL  
INFORMATION,  
PLEASE CONTACT:

**CASEY O'MALLEY**  
PRIMARY BROKER | 320.260.6815  
casey.omalley@riceproperties.com



1019 Industrial Drive South,  
Sauk Rapids, MN 56379  
320.260.6815 | RICEPROPERTIES.COM

We obtained the information above from sources we believe to be reliable. However, we claim to make a guarantee, warranty or representation about such information. It is submitted subject to the possibility of errors, omissions, change of price, rental or other conditions, prior sale, lease or financing, or withdrawal without notice. You and your tax and legal advisors should conduct your own investigation of the property and transaction.