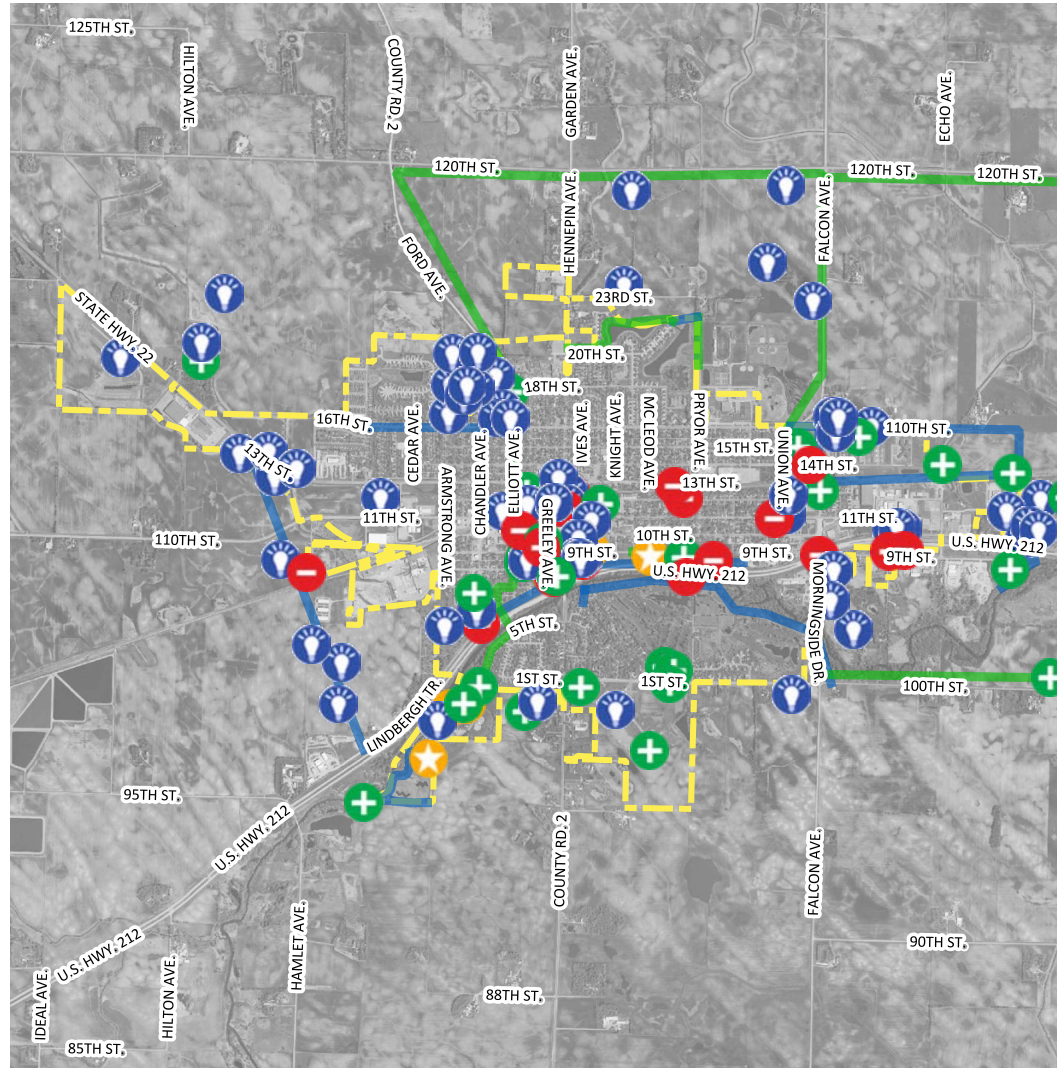


Individual comments and final results obtained from the plan's WIKIMAPPING tool.



FINAL WIKIMAP REPORT

This document is a final report for all the information collected from the Comprehensive Plan's Wikimapping tool.

Data collected is presented in this order over the next pages:

- Community assets
- Location of problems or issues
- Destinations
- Ideas or places to focus investments or attention
- New or improved routes for WALKING
- New or improved routes for BICYCLING

Legend

POINT Information Received

- A good place / an asset
- A problem or issue
- An important destination
- Place to focus investment

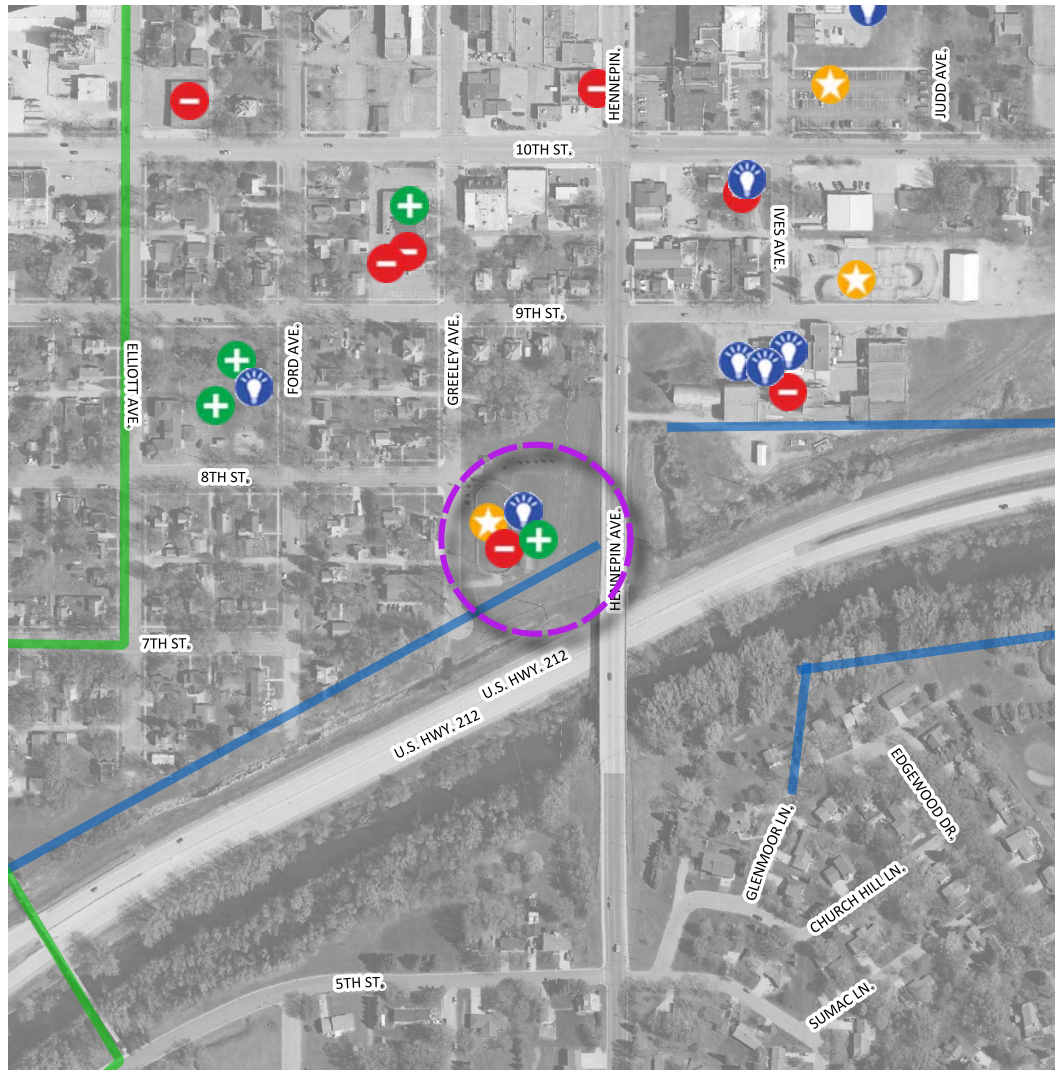
LINE Information Received

- A new BIKING route
- A new WALKING route

City of Glencoe Comprehensive Plan

A good place / an asset

Individual comments and final results obtained from the plan's WIKIMAPPING tool.



0 0.1 0.2 0.3 mi



TYPE: A good place / an asset

Date created: 2021-04-07 03:02:41

Data feature 410511

Comment received:

Ice rink is in need of repairs

Legend

POINT Information Received

- A good place / an asset
- A problem or issue
- An important destination
- Place to focus investment

LINE Information Received

- A new BIKING route
- A new WALKING route

Individual comments and final results obtained from the plan's WIKIMAPPING tool.



TYPE: A good place / an asset

Date created: 2021-04-06 18:41:52

Data feature 410502

Comment received:

Remove the sand box and add a splash pad.

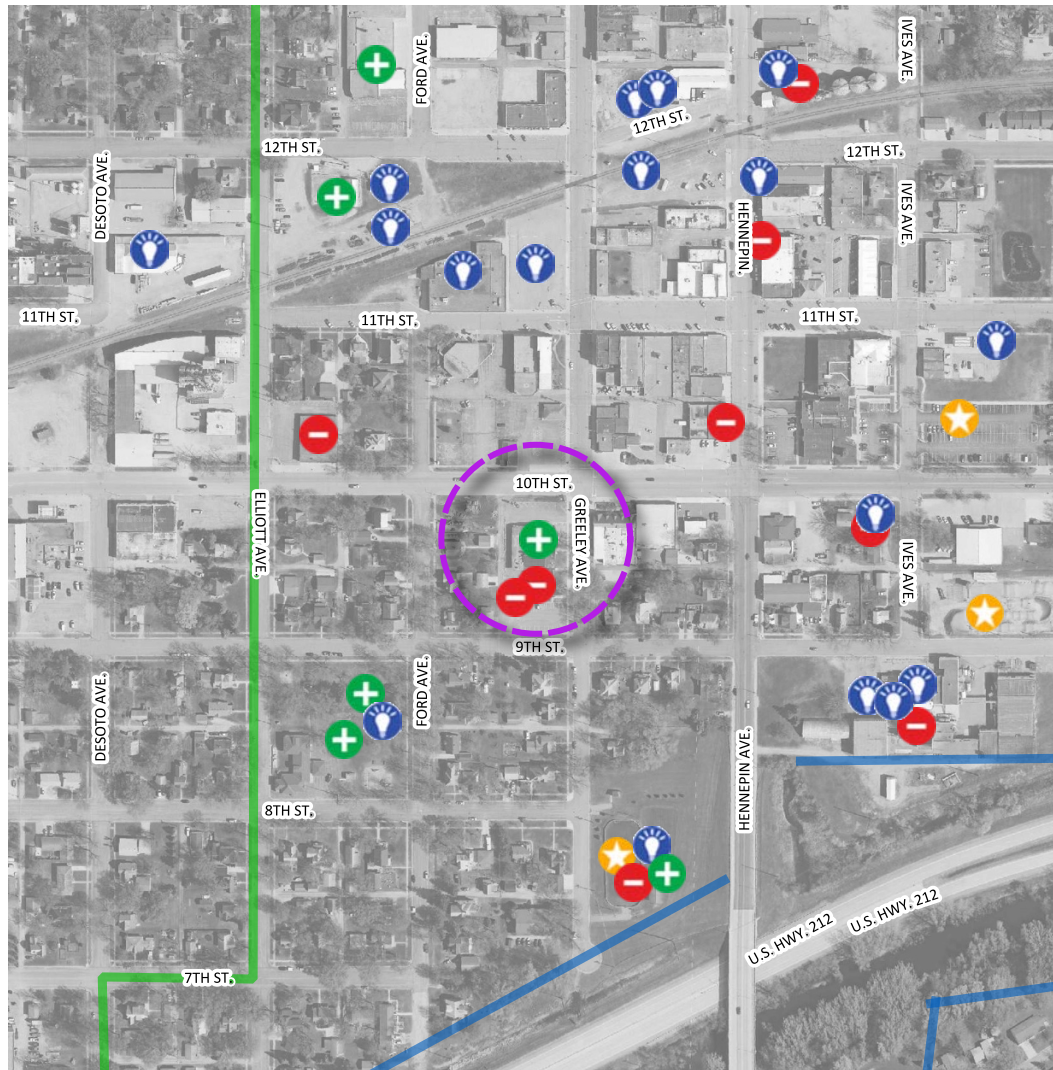
Legend

POINT Information Received	LINE Information Received
A good place / an asset	A new BIKING route
A problem or issue	A new WALKING route
An important destination	
Place to focus investment	

City of Glencoe Comprehensive Plan

A good place / an asset

Individual comments and final results obtained from the plan's WIKIMAPPING tool.



0 0.1 0.2 0.3 mi



TYPE: A good place / an asset

Date created: 2021-04-06 18:33:56

Data feature 410501

Comment received:

Let the liquor store take over entire building and they could have larger tasting events.

Legend

POINT Information Received

- A good place / an asset
- A problem or issue
- An important destination
- Place to focus investment

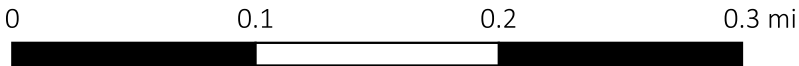
LINE Information Received

- A new BIKING route
- A new WALKING route

City of Glencoe Comprehensive Plan

A good place / an asset

Individual comments and final results obtained from the plan's WIKIMAPPING tool.



TYPE: A good place / an asset

Date created: 2021-03-18 16:10:11
Data feature 409871

Comment received:
Great place to add a bike path along 100th Street to the city to the county park.

Legend

POINT Information Received

+

A good place / an asset

-

A problem or issue

★

An important destination

💡

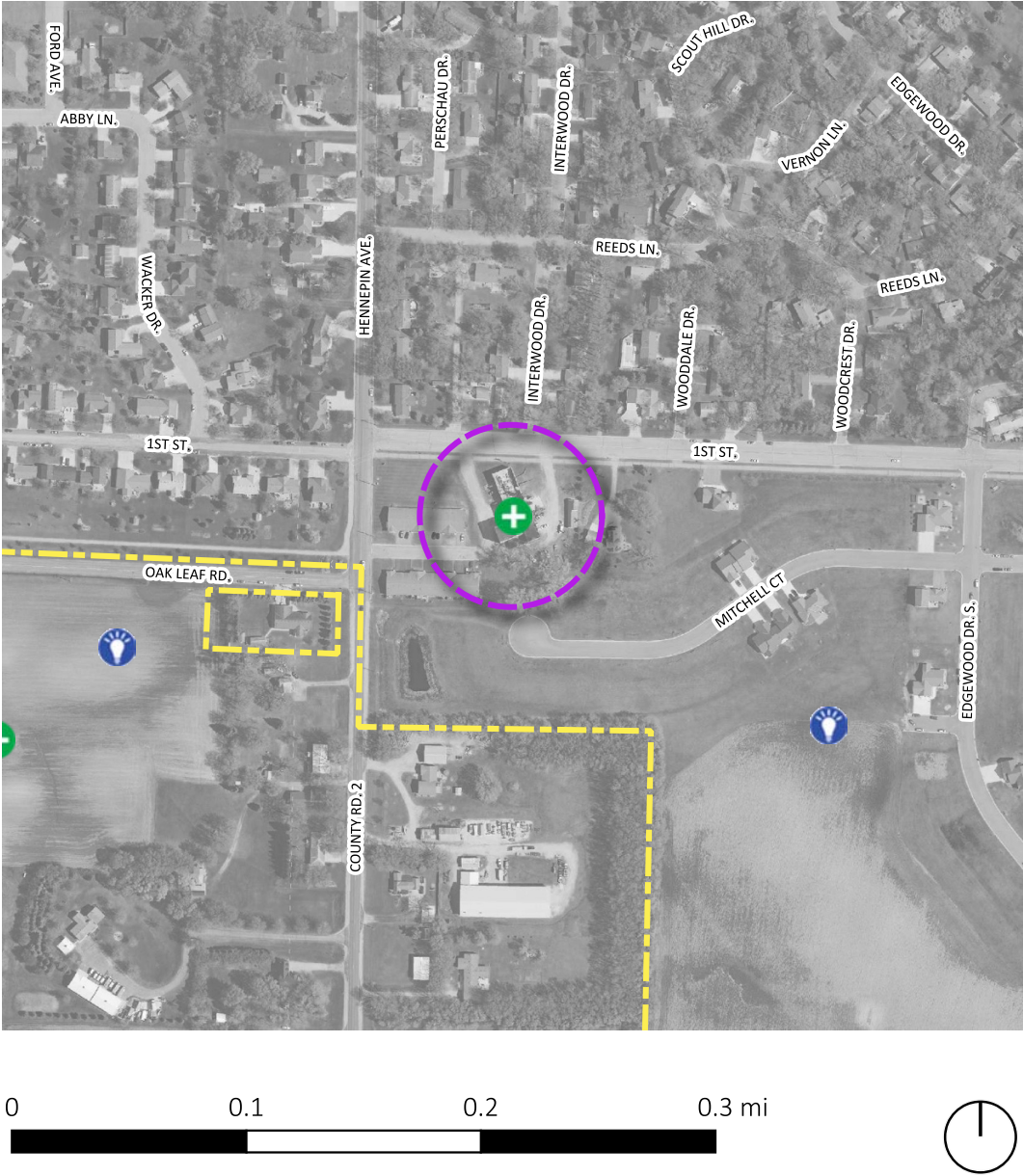
Place to focus investment

LINE Information Received

A new BIKING route

A new WALKING route

Individual comments and final results obtained from the plan's WIKIMAPPING tool.



TYPE: A good place / an asset

Date created: 2021-02-09 22:00:20

Data feature 408505

Comment received:

The brewery is such a great historic building and contributes to the historic identity of Glencoe.

Legend

POINT Information Received	LINE Information Received
A good place / an asset	A new BIKING route
A problem or issue	A new WALKING route
An important destination	
Place to focus investment	

City of Glencoe Comprehensive Plan

Individual comments and final results obtained from the plan's WIKIMAPPING tool.

A good place / an asset



0 0.1 0.2 0.3 mi



TYPE: A good place / an asset

Date created: 2020-11-20 21:11:01

Data feature 406439

Comment received:

Possible new green space

Legend

POINT Information Received

- A good place / an asset
- A problem or issue
- An important destination
- Place to focus investment

LINE Information Received

- A new BIKING route
- A new WALKING route

Individual comments and final results obtained from the plan's WIKIMAPPING tool.



TYPE: A good place / an asset

Date created: 2021-02-09 13:39:50

Data feature 408482

Comment received:

walking path

Legend

POINT Information Received	LINE Information Received
A good place / an asset	A new BIKING route
A problem or issue	A new WALKING route
An important destination	
Place to focus investment	

Individual comments and final results obtained from the plan's WIKIMAPPING tool.



TYPE: A good place / an asset

Date created: 2021-01-19 22:54:19

Data feature 407895

Comment received:

Additional apartments as the previous one built is already full.
Continue 14th east to Diamond

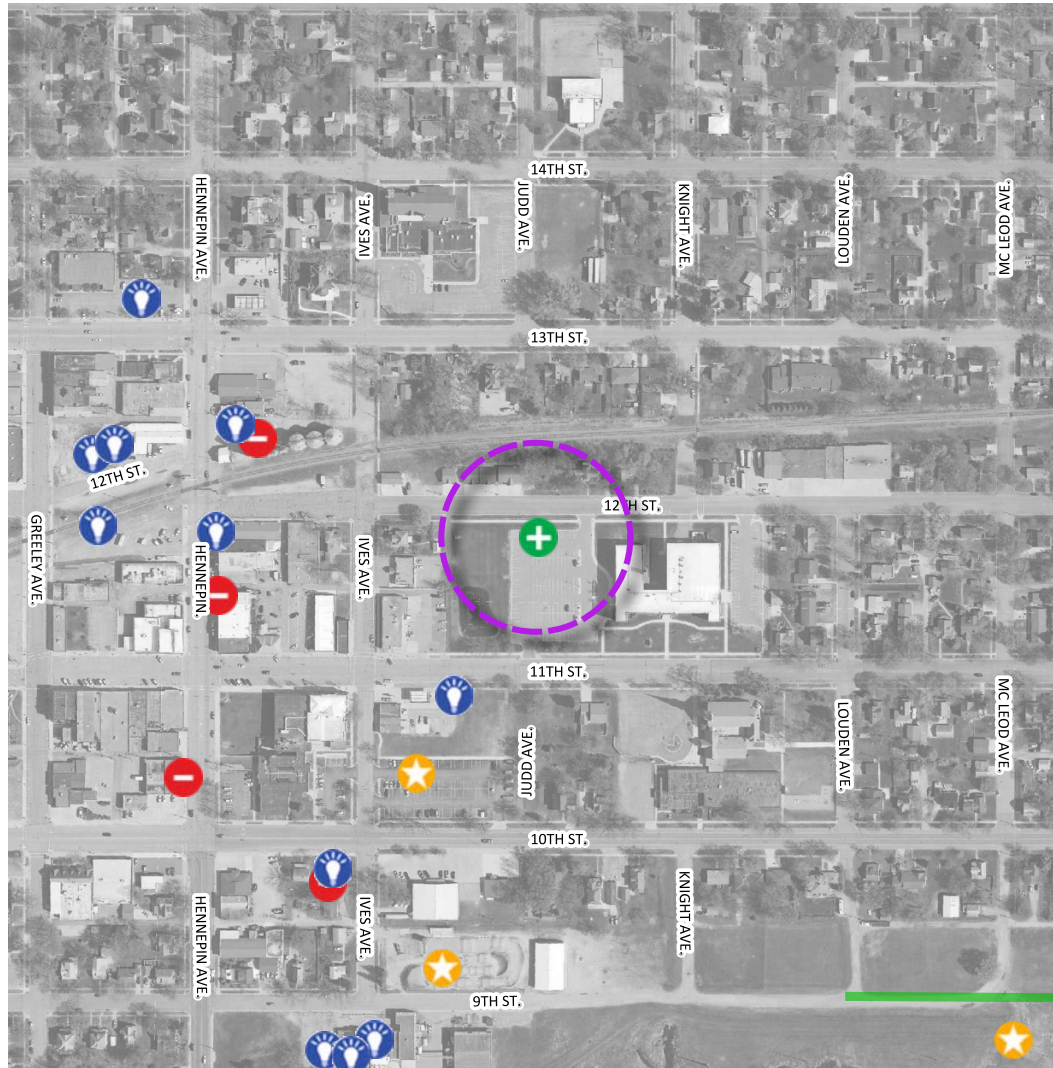
Legend

POINT Information Received	LINE Information Received
A good place / an asset	A new BIKING route
A problem or issue	A new WALKING route
An important destination	
Place to focus investment	

City of Glencoe Comprehensive Plan

A good place / an asset

Individual comments and final results obtained from the plan's WIKIMAPPING tool.



0 0.1 0.2 0.3 mi



TYPE: A good place / an asset

Date created: 2021-01-14 16:51:34

Data feature 407813

Comment received:

Bring back Heat in the Street! Infrastructure is already here for electrical demands for stage power.

Legend

POINT Information Received

- A good place / an asset
- A problem or issue
- An important destination
- Place to focus investment

LINE Information Received

- A new BIKING route
- A new WALKING route

City of Glencoe Comprehensive Plan

A good place / an asset

Individual comments and final results obtained from the plan's WIKIMAPPING tool.



0 0.1 0.2 0.3 mi



TYPE: A good place / an asset

Date created: 2021-01-14 16:43:09

Data feature 407810

Comment received:

Vollmer Field

Legend

POINT Information Received

- A good place / an asset
- A problem or issue
- An important destination
- Place to focus investment

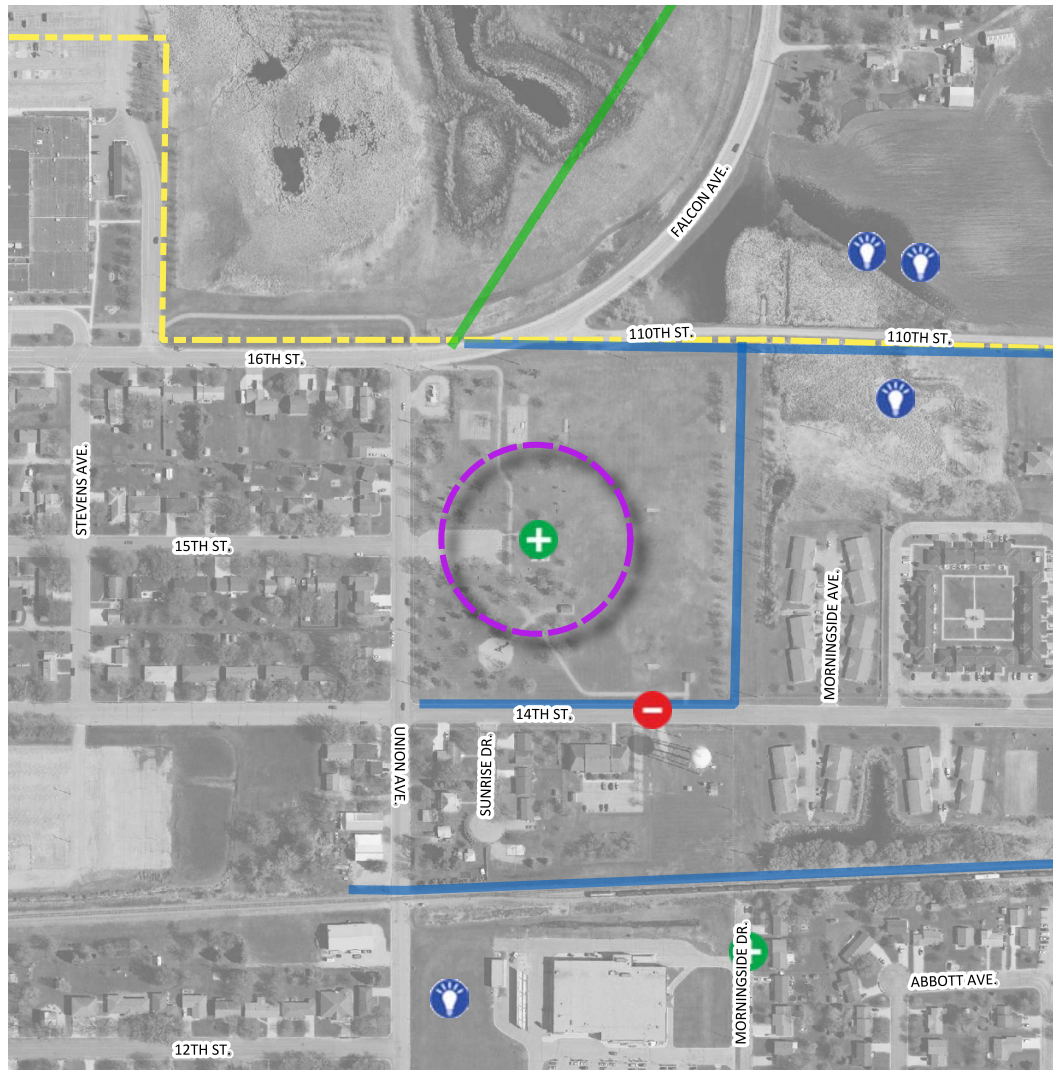
LINE Information Received

- A new BIKING route
- A new WALKING route

City of Glencoe Comprehensive Plan

A good place / an asset

Individual comments and final results obtained from the plan's WIKIMAPPING tool.



0 0.1 0.2 0.3 mi



TYPE: A good place / an asset

Date created: 2020-11-20 21:15:29

Data feature 406444

Comment received:

Oscar Olson

Legend

POINT Information Received

- A good place / an asset
- A problem or issue
- An important destination
- Place to focus investment

LINE Information Received

- A new BIKING route
- A new WALKING route

City of Glencoe Comprehensive Plan

Individual comments and final results obtained from the plan's WIKIMAPPING tool.

A good place / an asset



0 0.1 0.2 0.3 mi



TYPE: A good place / an asset

Date created: 2020-11-30 17:13:50

Data feature 406754

Comment received:

TCWR Great Business Asset. Possible Rail Switch Yard

Legend

POINT Information Received

- A good place / an asset
- A problem or issue
- An important destination
- Place to focus investment

LINE Information Received

- A new BIKING route
- A new WALKING route

City of Glencoe Comprehensive Plan

A good place / an asset

Individual comments and final results obtained from the plan's WIKIMAPPING tool.



0 0.1 0.2 0.3 mi



TYPE: A good place / an asset

Date created: 2020-11-20 21:19:48





Data feature 406446

Comment received:



Airport

Legend

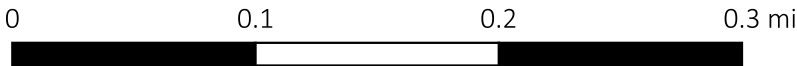
POINT Information Received

-  A good place / an asset
-  A problem or issue
-  An important destination
-  Place to focus investment

LINE Information Received

-  A new BIKING route
-  A new WALKING route

Individual comments and final results obtained from the plan's WIKIMAPPING tool.



TYPE: A good place / an asset

Date created: 2020-11-20 21:20:12

Data feature 406447

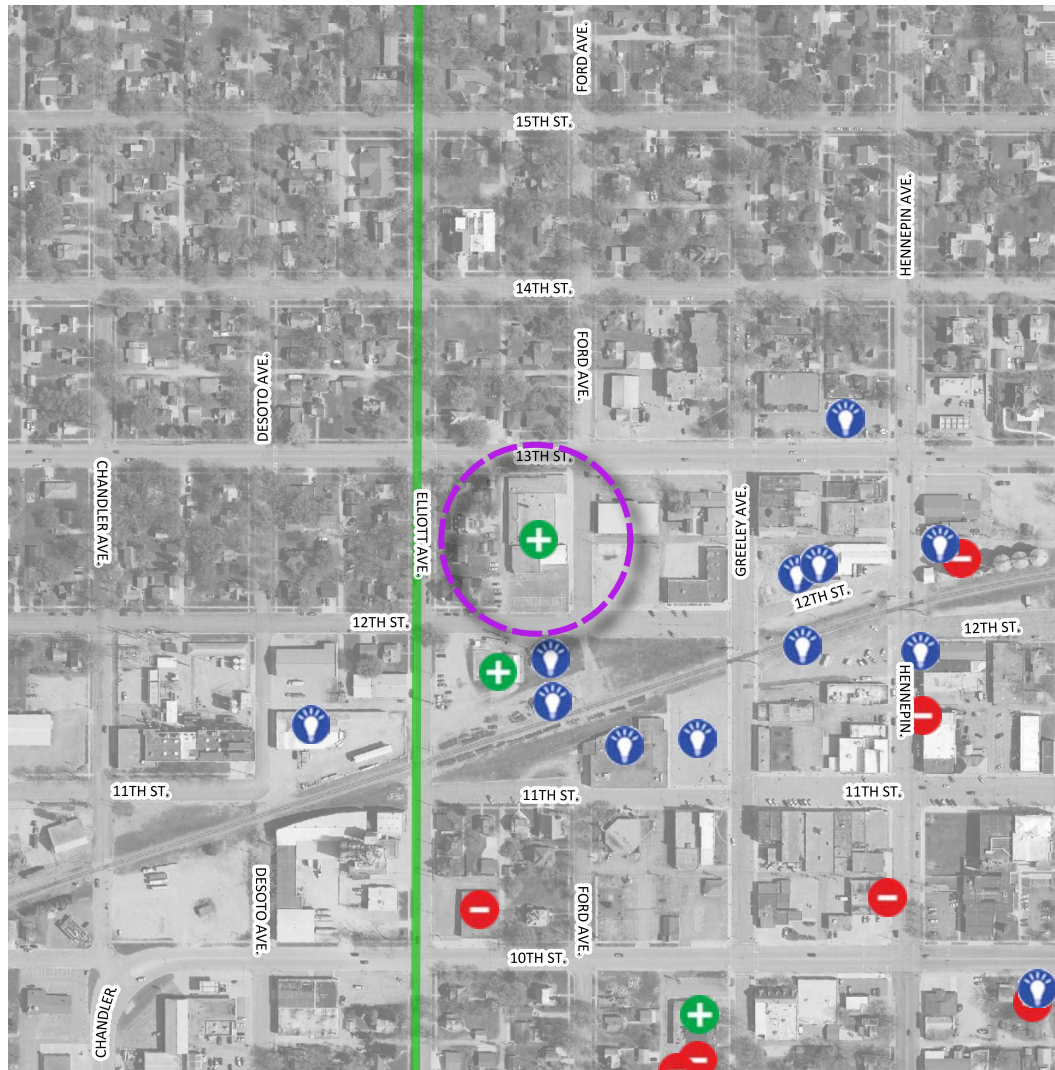
Comment received:

County Park

Legend

POINT Information Received	LINE Information Received
A good place / an asset	A new BIKING route
A problem or issue	A new WALKING route
An important destination	
Place to focus investment	

Individual comments and final results obtained from the plan's WIKIMAPPING tool.



TYPE: A good place / an asset

Date created: 2020-11-27 21:46:05

Data feature 406677

Comment received:

Buffer between residential to the northwest and commercial/recreation to the southeast. As mentioned, mixed use ... residential with possible retail or recreation-related below (Bike rental, etc.).

Legend

POINT Information Received

- + A good place / an asset
- A problem or issue
- ★ An important destination
- 💡 Place to focus investment

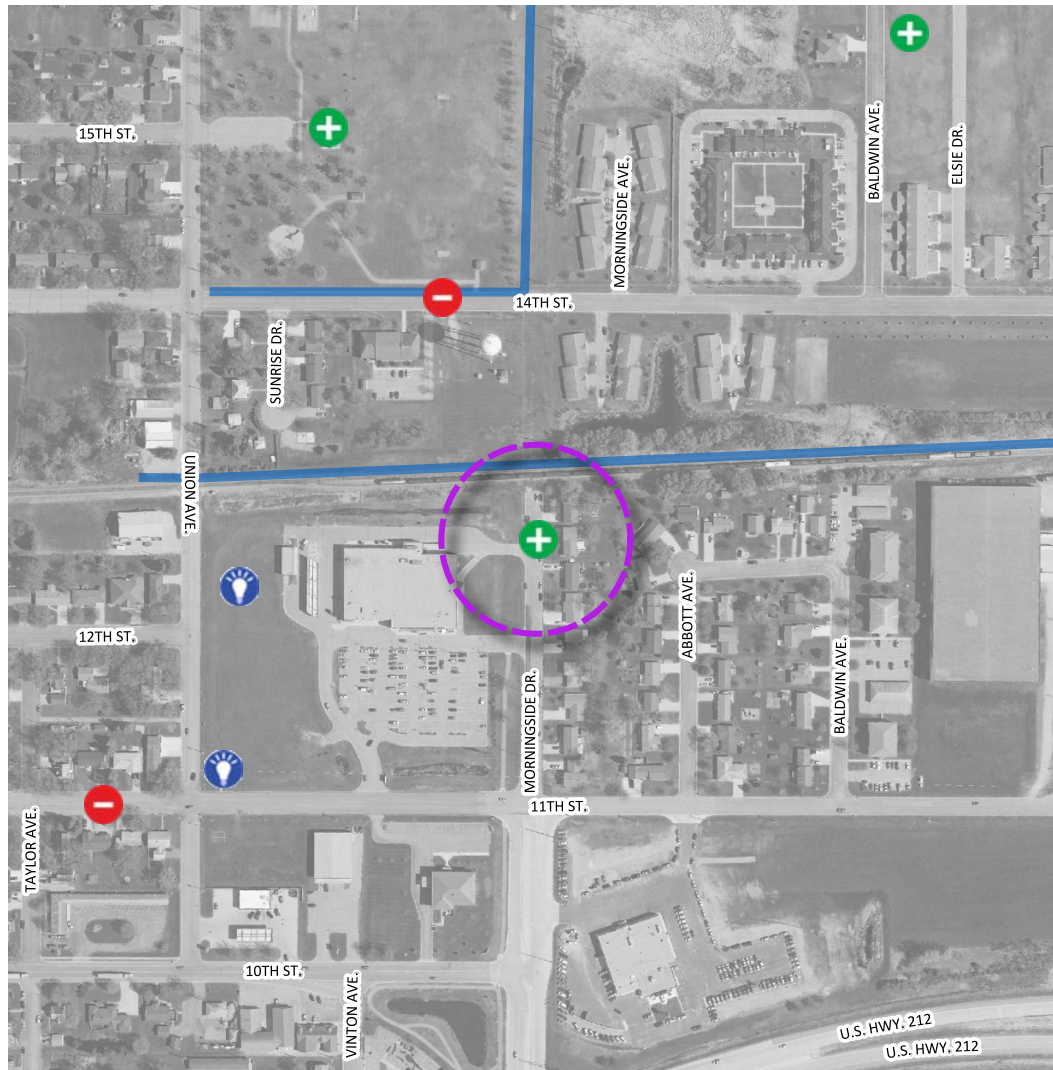
LINE Information Received

- A new BIKING route
- A new WALKING route

City of Glencoe Comprehensive Plan

A good place / an asset

Individual comments and final results obtained from the plan's WIKIMAPPING tool.



0 0.1 0.2 0.3 mi



TYPE: A good place / an asset

Date created: 2020-11-23 16:29:20

Data feature 406504

Comment received:

Morningside Ave north of 11th street and north of the new roundabout should be looked at for future business district

Legend

POINT Information Received

- A good place / an asset
- A problem or issue
- An important destination
- Place to focus investment

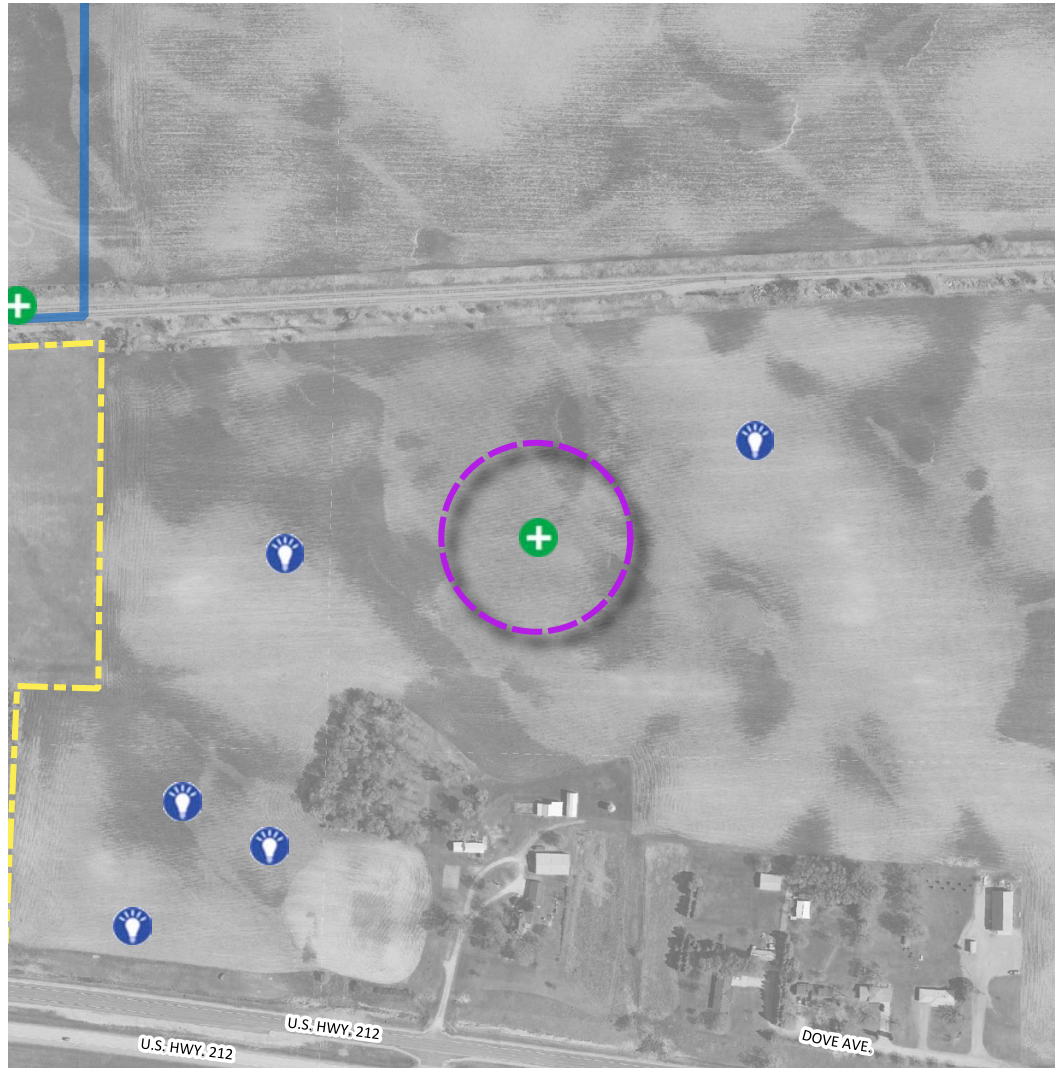
LINE Information Received

- A new BIKING route
- A new WALKING route

City of Glencoe Comprehensive Plan

Individual comments and final results obtained from the plan's WIKIMAPPING tool.

A good place / an asset



0 0.1 0.2 0.3 mi



TYPE: A good place / an asset

Date created: 2020-11-23 16:30:26





Data feature 406505

Comment received:



new industrial area along the RR tracks with commercial area along hwy 212

Legend

POINT Information Received

-  A good place / an asset
-  A problem or issue
-  An important destination
-  Place to focus investment

LINE Information Received

-  A new BIKING route
-  A new WALKING route

City of Glencoe Comprehensive Plan

Individual comments and final results obtained from the plan's WIKIMAPPING tool.

A good place / an asset



0 0.1 0.2 0.3 mi



TYPE: A good place / an asset

Date created: 2020-11-23 16:43:59

Data feature 406506

Comment received:

this area should be looked at for some long term assist living with walking paths and cartways to the hospital (county building and the helen baker site)

Legend

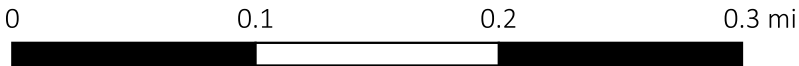
POINT Information Received

- A good place / an asset
- A problem or issue
- An important destination
- Place to focus investment

LINE Information Received

- A new BIKING route
- A new WALKING route

Individual comments and final results obtained from the plan's WIKIMAPPING tool.



TYPE: A good place / an asset

Date created: 2020-11-27 21:40:51

Data feature 406676

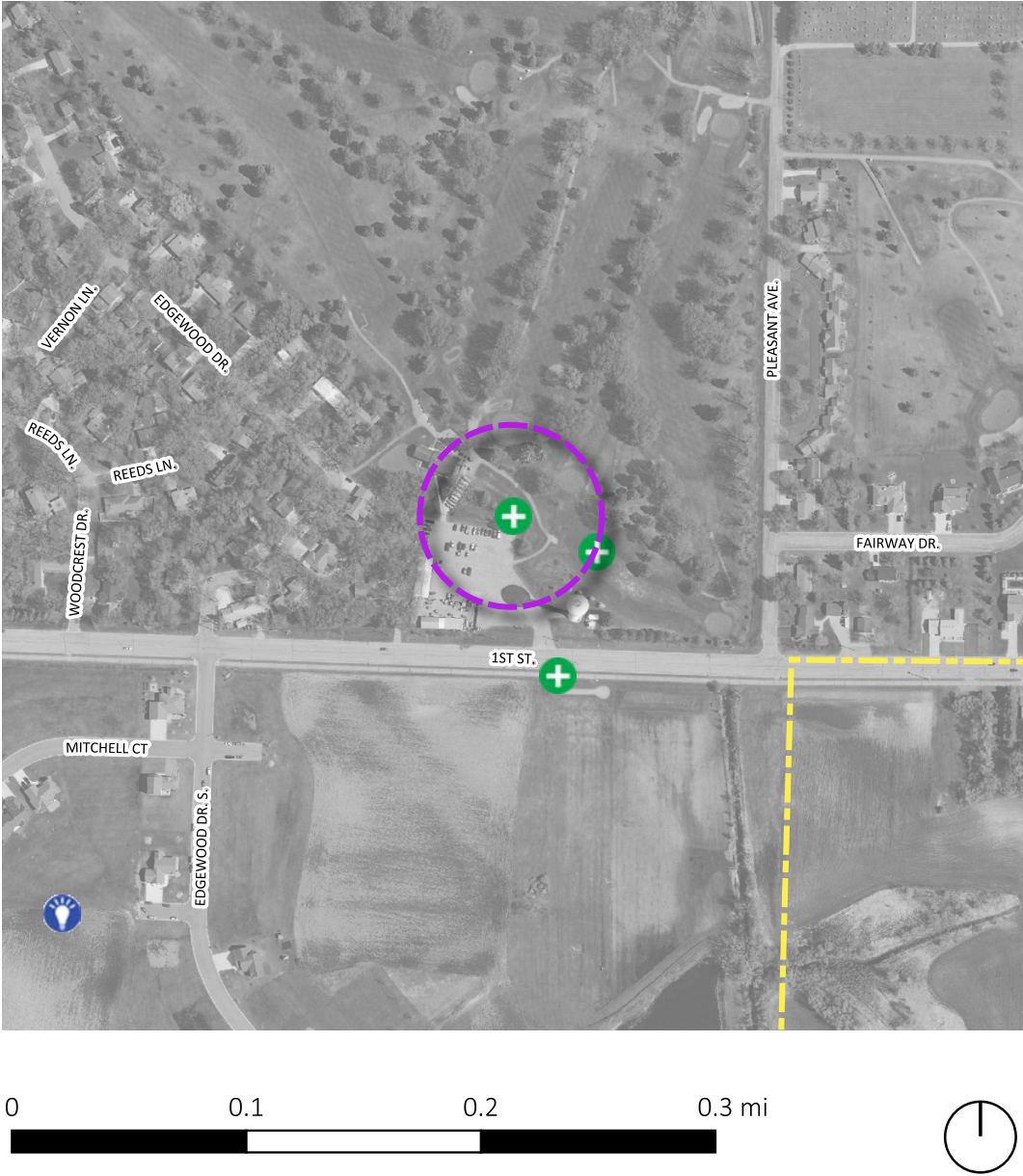
Comment received:

A great place for a restaurant similar to Vandy's in Waconia.
Also smaller event space.

Legend

POINT Information Received	LINE Information Received
A good place / an asset	A new BIKING route
A problem or issue	A new WALKING route
An important destination	
Place to focus investment	

Individual comments and final results obtained from the plan's WIKIMAPPING tool.



TYPE: A good place / an asset

Date created: 2020-11-25 02:47:21

Data feature 406541

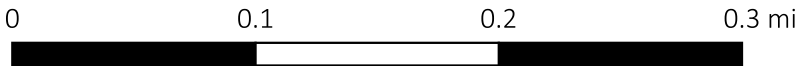
Comment received:

Golf Course is a huge asset. Updating the restaurant/ accessibility could help both the course and Glencoe.

Legend

POINT Information Received	LINE Information Received
A good place / an asset	A new BIKING route
A problem or issue	A new WALKING route
An important destination	
Place to focus investment	

Individual comments and final results obtained from the plan's WIKIMAPPING tool.



TYPE: A good place / an asset

Date created: 2020-11-25 02:44:02

Data feature 406540

Comment received:

Possible Dog Park Site

Legend

POINT Information Received

+

A good place / an asset

-

A problem or issue

★

An important destination

💡

Place to focus investment

LINE Information Received

A new BIKING route

A new WALKING route

Wikimap - FINAL REPORT

22

Individual comments and final results obtained from the plan's WIKIMAPPING tool.



TYPE: A good place / an asset

Date created: 2020-11-25 02:37:22

Data feature 406534

Comment received:

Future Residential growth

Legend

POINT Information Received

A good place / an asset

A problem or issue

An important destination

Place to focus investment

LINE Information Received

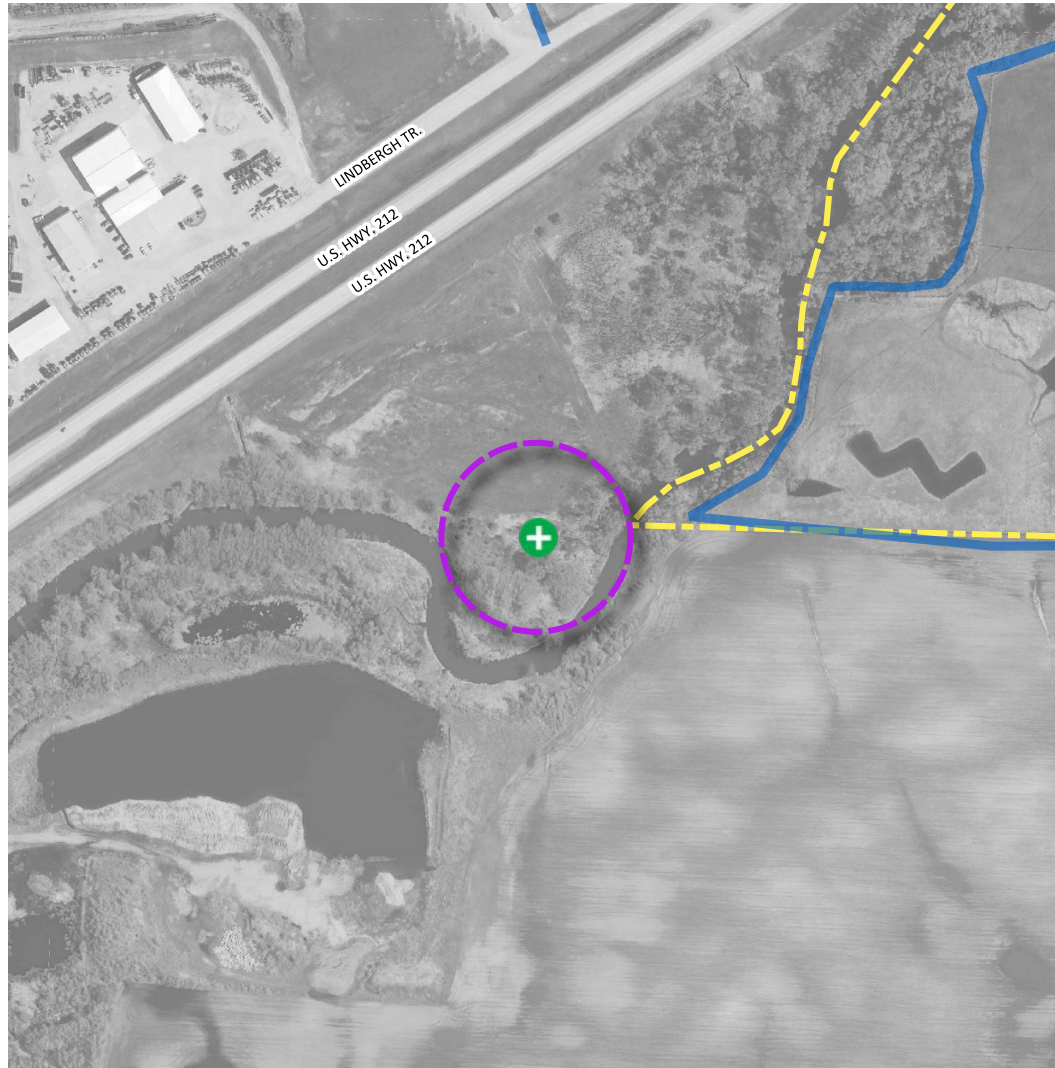
A new BIKING route

A new WALKING route

City of Glencoe Comprehensive Plan

Individual comments and final results obtained from the plan's WIKIMAPPING tool.

A good place / an asset



TYPE: A good place / an asset

Date created: 2020-11-25 02:26:32





Data feature 406529

Comment received:



Future Oak Leaf Park expansion with roadway to Hamlet Ave connection

Legend

POINT Information Received

-  A good place / an asset
-  A problem or issue
-  An important destination
-  Place to focus investment

LINE Information Received

-  A new BIKING route
-  A new WALKING route

City of Glencoe Comprehensive Plan

A good place / an asset

Individual comments and final results obtained from the plan's WIKIMAPPING tool.



TYPE: A good place / an asset

Date created: 2020-11-25 02:23:50





Data feature 406528

Comment received:



Dog Park

Legend

POINT Information Received

-  A good place / an asset
-  A problem or issue
-  An important destination
-  Place to focus investment

LINE Information Received

-  A new BIKING route
-  A new WALKING route

City of Glencoe Comprehensive Plan

A good place / an asset

Individual comments and final results obtained from the plan's WIKIMAPPING tool.



0 0.1 0.2 0.3 mi



TYPE: A good place / an asset

Date created: 2020-11-25 02:21:44

Data feature 406527

Comment received:

Future Residential Development

Legend

POINT Information Received

- A good place / an asset
- A problem or issue
- An important destination
- Place to focus investment

LINE Information Received

- A new BIKING route
- A new WALKING route

Individual comments and final results obtained from the plan's WIKIMAPPING tool.



TYPE: A good place / an asset

Date created: 2020-11-25 02:19:53

Data feature 406526

Comment received:

Senior/One level 4 plex housing

Legend

POINT Information Received	LINE Information Received
A good place / an asset	A new BIKING route
A problem or issue	A new WALKING route
An important destination	
Place to focus investment	

Individual comments and final results obtained from the plan's WIKIMAPPING tool.



TYPE: A good place / an asset

Date created: 2020-11-25 02:18:31

Data feature 406525

Comment received:

Great Potential site for Mixed use commercial at ground level and residential on 2nd level

Legend

POINT Information Received	LINE Information Received
A good place / an asset	A new BIKING route
A problem or issue	A new WALKING route
An important destination	
Place to focus investment	

City of Glencoe Comprehensive Plan

A good place / an asset

Individual comments and final results obtained from the plan's WIKIMAPPING tool.



0 0.1 0.2 0.3 mi



TYPE: A good place / an asset

Date created: 2020-11-25 02:17:06





Data feature 406524

Comment received:



Future Business Site

Legend

POINT Information Received

-  A good place / an asset
-  A problem or issue
-  An important destination
-  Place to focus investment

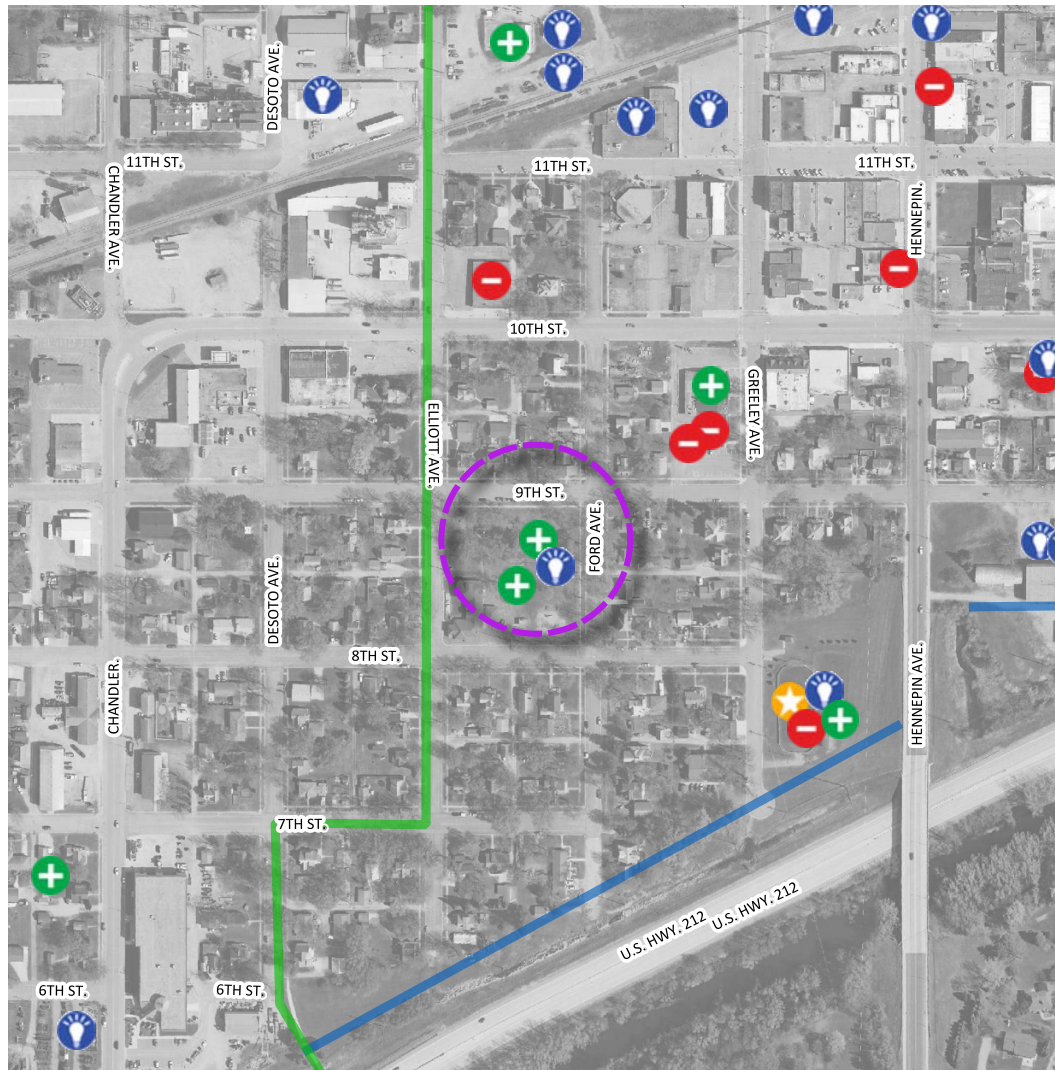
LINE Information Received

-  A new BIKING route
-  A new WALKING route

City of Glencoe Comprehensive Plan

A good place / an asset

Individual comments and final results obtained from the plan's WIKIMAPPING tool.



0 0.1 0.2 0.3 mi



TYPE: A good place / an asset

Date created: 2020-11-25 02:09:18

Data feature 406522

Comment received:

Lincoln Park- Good place for a Splash Pad

Legend

POINT Information Received

- A good place / an asset
- A problem or issue
- An important destination
- Place to focus investment

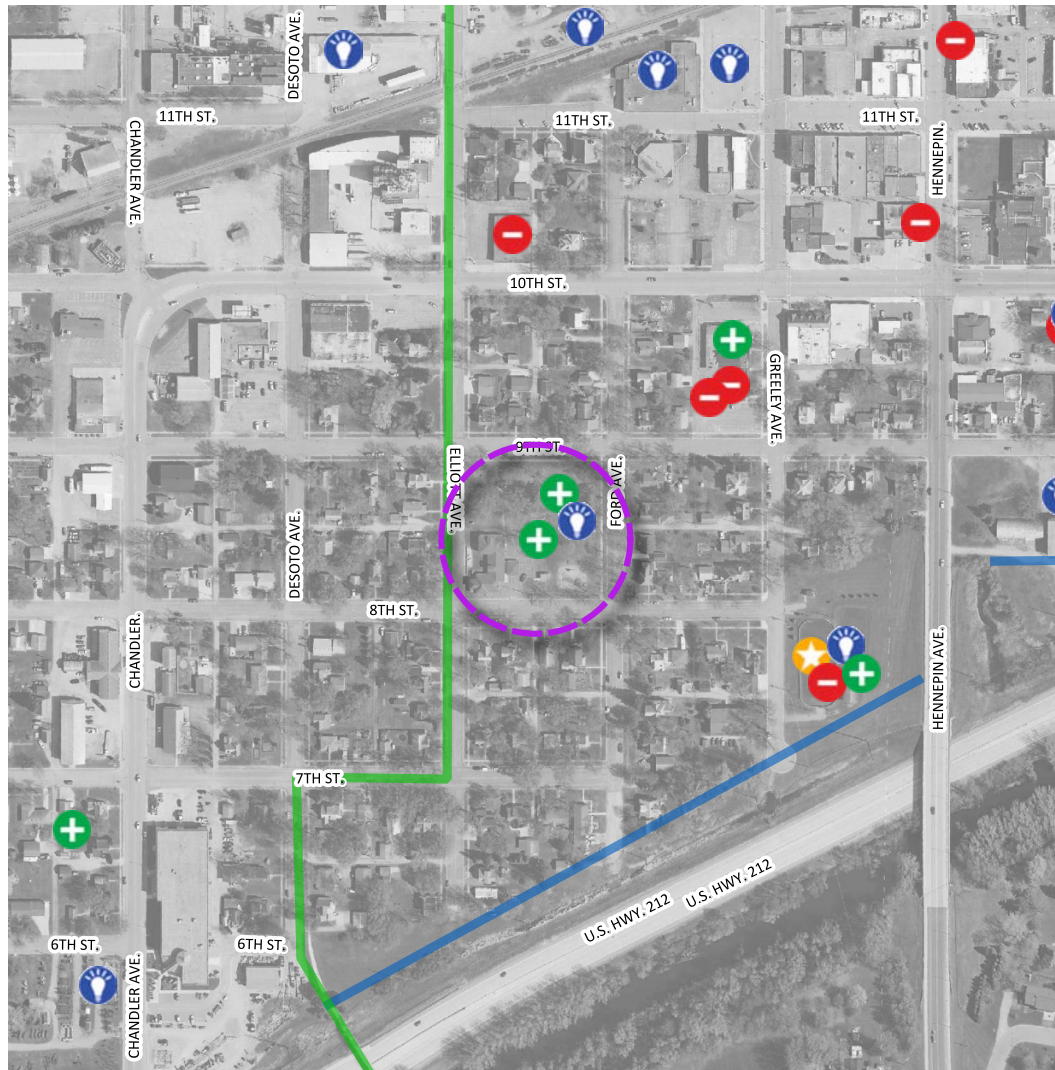
LINE Information Received

- A new BIKING route
- A new WALKING route

City of Glencoe Comprehensive Plan

A good place / an asset

Individual comments and final results obtained from the plan's WIKIMAPPING tool.



0 0.1 0.2 0.3 mi



TYPE: A good place / an asset

Date created: 2020-11-25 02:09:58

Data feature 406523

Comment received:

Lincoln Park- A good place for a Splash Pad

Legend

POINT Information Received

- A good place / an asset
- A problem or issue
- An important destination
- Place to focus investment

LINE Information Received

- A new BIKING route
- A new WALKING route

City of Glencoe Comprehensive Plan

A problem or issue

Individual comments and final results obtained from the plan's WIKIMAPPING tool.



0 0.1 0.2 0.3 mi



TYPE: A problem or issue

Date created: 2020-11-30 02:15:32

Data feature 406729

Comment received:

This crossing is now closed, not necessarily a problem but just an FYI

Legend

POINT Information Received

- A good place / an asset
- A problem or issue
- An important destination
- Place to focus investment

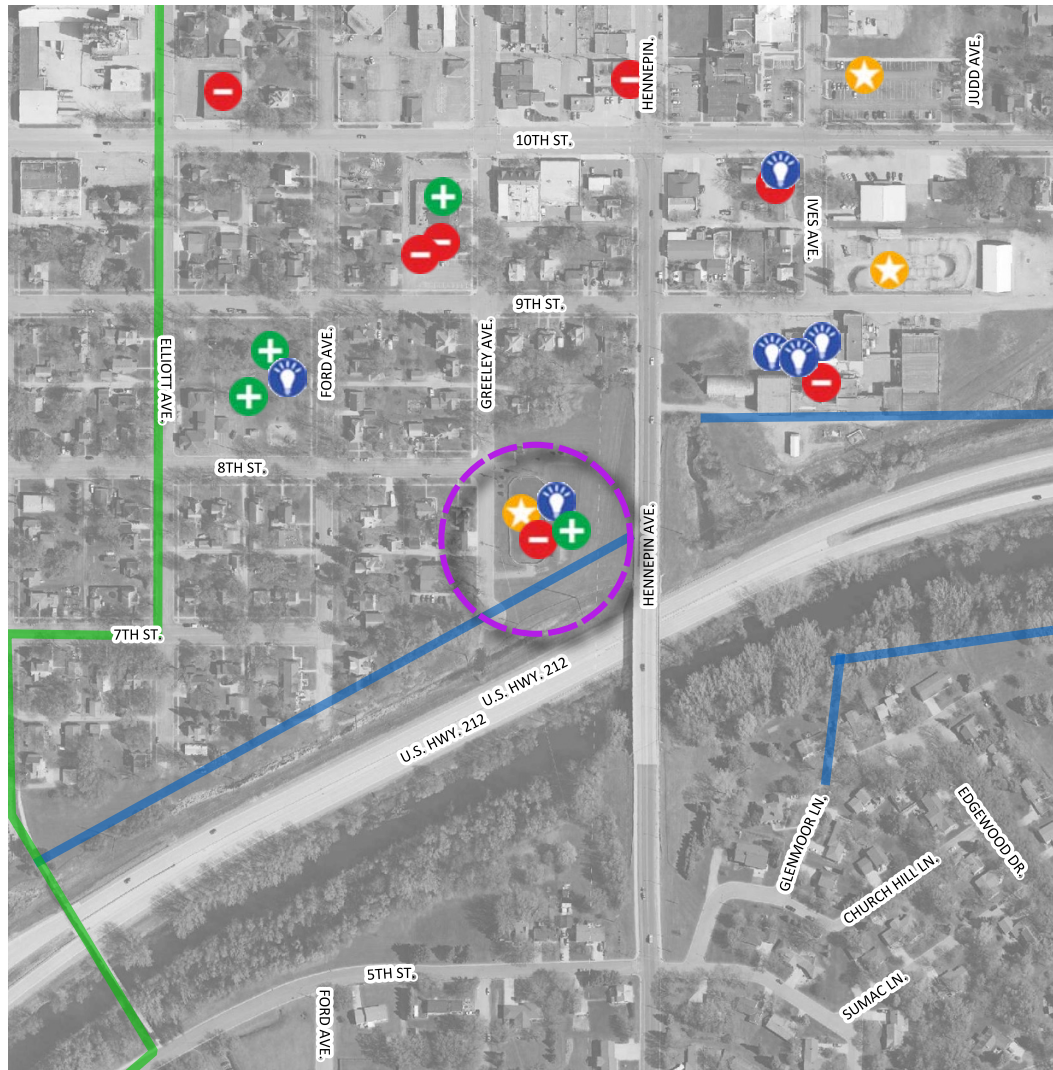
LINE Information Received

- A new BIKING route
- A new WALKING route

City of Glencoe Comprehensive Plan

A problem or issue

Individual comments and final results obtained from the plan's WIKIMAPPING tool.



0 0.1 0.2 0.3 mi



TYPE: A problem or issue

Date created: 2021-02-08 17:34:07





Data feature 408454

Comment received:



Should concrete the outdoor rink for year round usage (roller hockey) and have better ice conditions

Legend

POINT Information Received

-  A good place / an asset
-  A problem or issue
-  An important destination
-  Place to focus investment

LINE Information Received

-  A new BIKING route
-  A new WALKING route

City of Glencoe Comprehensive Plan

A problem or issue

Individual comments and final results obtained from the plan's WIKIMAPPING tool.



0 0.1 0.2 0.3 mi



TYPE: A problem or issue

Date created: 2021-04-07 03:10:18

Data feature 410516

Comment received:

Have only south side parking on 14th St

Legend

POINT Information Received

- A good place / an asset
- A problem or issue
- An important destination
- Place to focus investment

LINE Information Received

- A new BIKING route
- A new WALKING route

Individual comments and final results obtained from the plan's WIKIMAPPING tool.



TYPE: A problem or issue

Date created: 2020-11-20 21:04:01

Data feature 406434

Comment received:

Highway 212 and 22

Legend

POINT Information Received

A good place / an asset

A problem or issue

An important destination

Place to focus investment

LINE Information Received

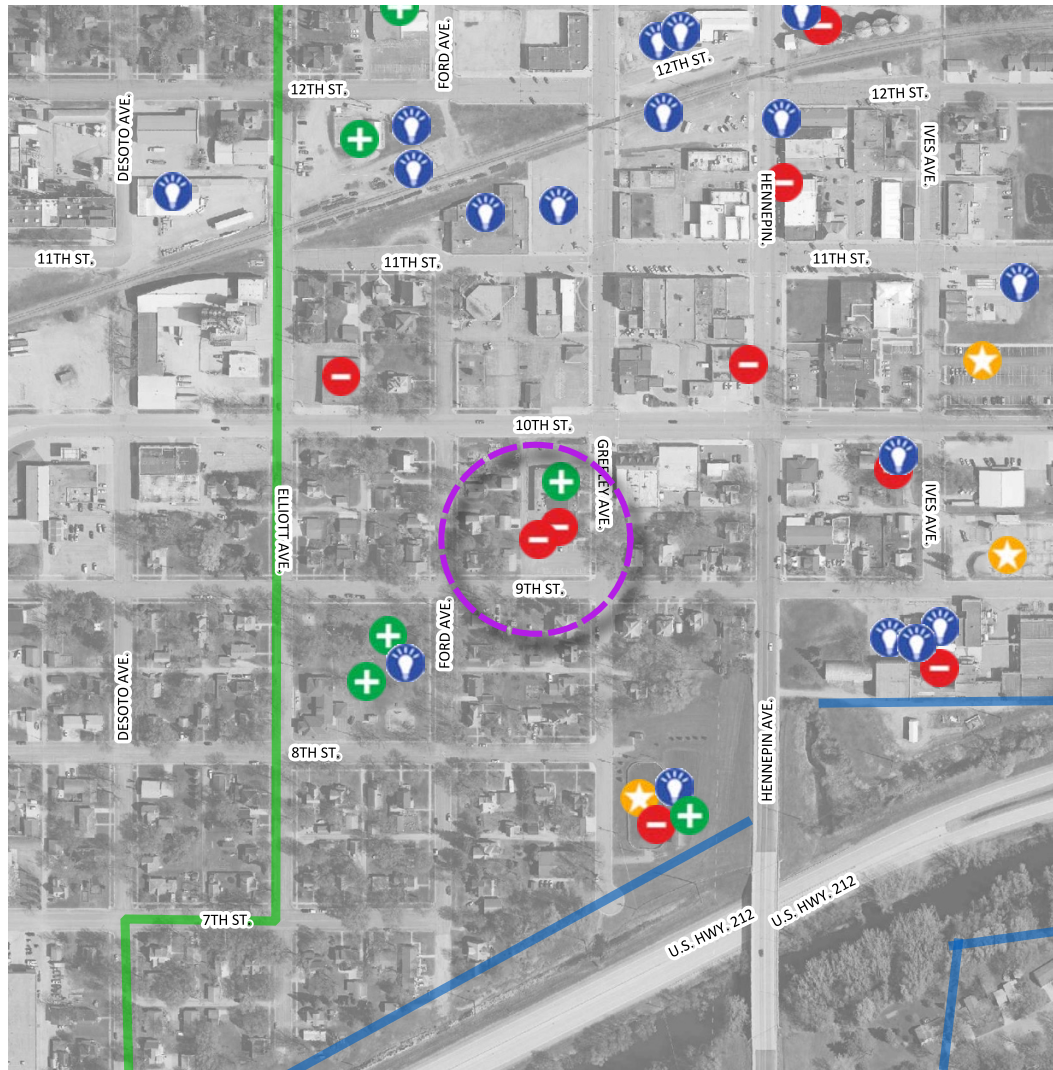
A new BIKING route

A new WALKING route

City of Glencoe Comprehensive Plan

A problem or issue

Individual comments and final results obtained from the plan's WIKIMAPPING tool.



0 0.1 0.2 0.3 mi



TYPE: A problem or issue

Date created: 2021-04-07 03:01:18

Data feature 410510

Comment received:

Not enough indoor parking at Police Department, building has many issues including gutters, space, layout, and security

Legend

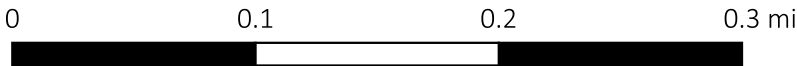
POINT Information Received

- A good place / an asset
- A problem or issue
- An important destination
- Place to focus investment

LINE Information Received

- A new BIKING route
- A new WALKING route

Individual comments and final results obtained from the plan's WIKIMAPPING tool.



TYPE: A problem or issue

Date created: 2021-04-06 18:44:51

Data feature 410503

Comment received:

Agreed! This need to get cleaned up.

Legend

POINT Information Received	LINE Information Received
A good place / an asset	A new BIKING route
A problem or issue	A new WALKING route
An important destination	
Place to focus investment	

City of Glencoe Comprehensive Plan

Individual comments and final results obtained from the plan's WIKIMAPPING tool.

A problem or issue



0 0.1 0.2 0.3 mi



TYPE: A problem or issue

Date created: 2020-11-30 02:23:02

Data feature 406730

Comment received:

This is a good area for a walking path maybe, the odors that come from Seneca silage pile and there water treatment lagoons are a big minus. For all kinds of development. These will not go away and Seneca needs the surrounding land for injecting the solid biomass waste in the fields.

Legend

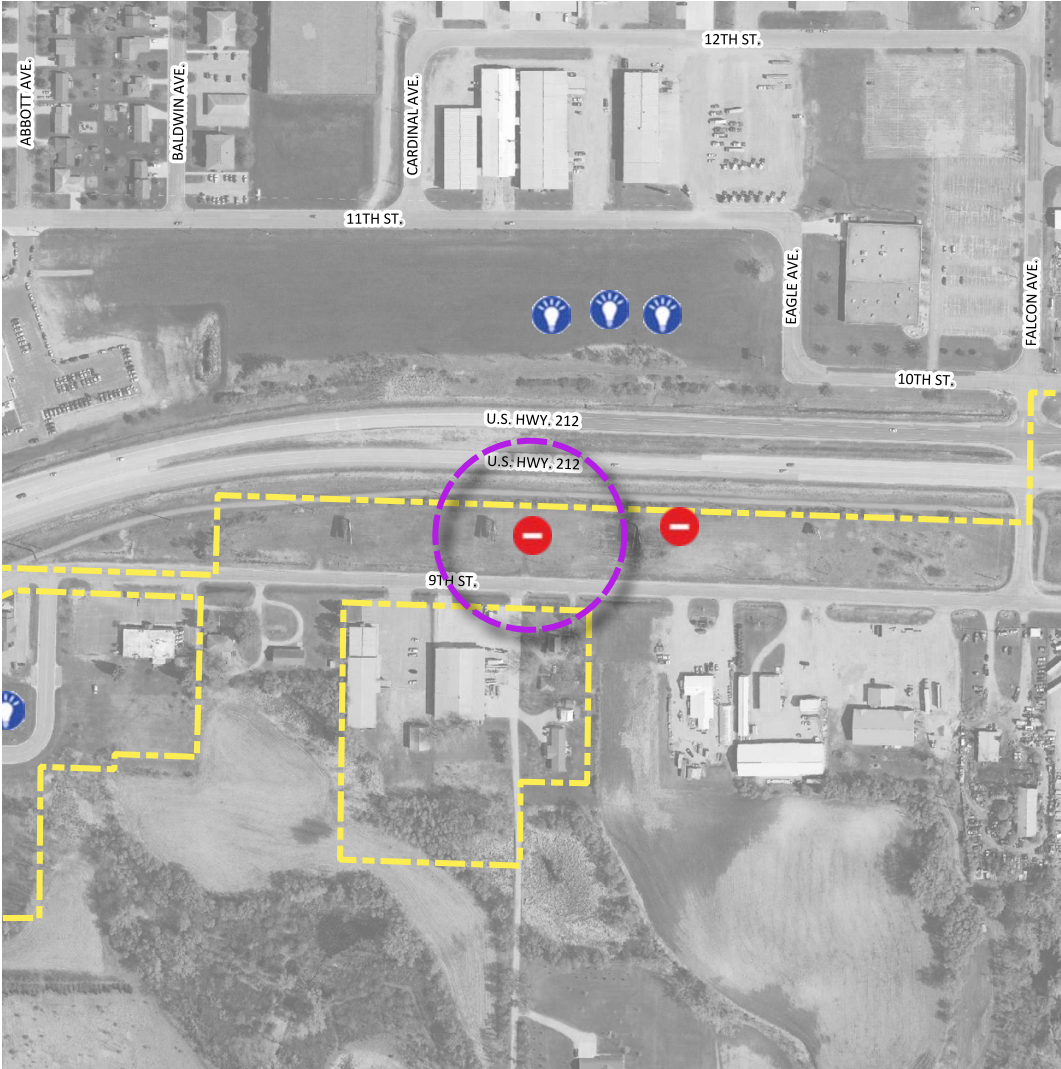
POINT Information Received

- A good place / an asset
- A problem or issue
- An important destination
- Place to focus investment

LINE Information Received

- A new BIKING route
- A new WALKING route

Individual comments and final results obtained from the plan's WIKIMAPPING tool.



TYPE: A problem or issue

Date created: 2020-11-30 02:27:37

Data feature 406731

Comment received:
clean up and beautify this corridor as well

Legend

POINT Information Received

+

A good place / an asset

-

A problem or issue

★

An important destination

💡

Place to focus investment

LINE Information Received

A new BIKING route

A new WALKING route

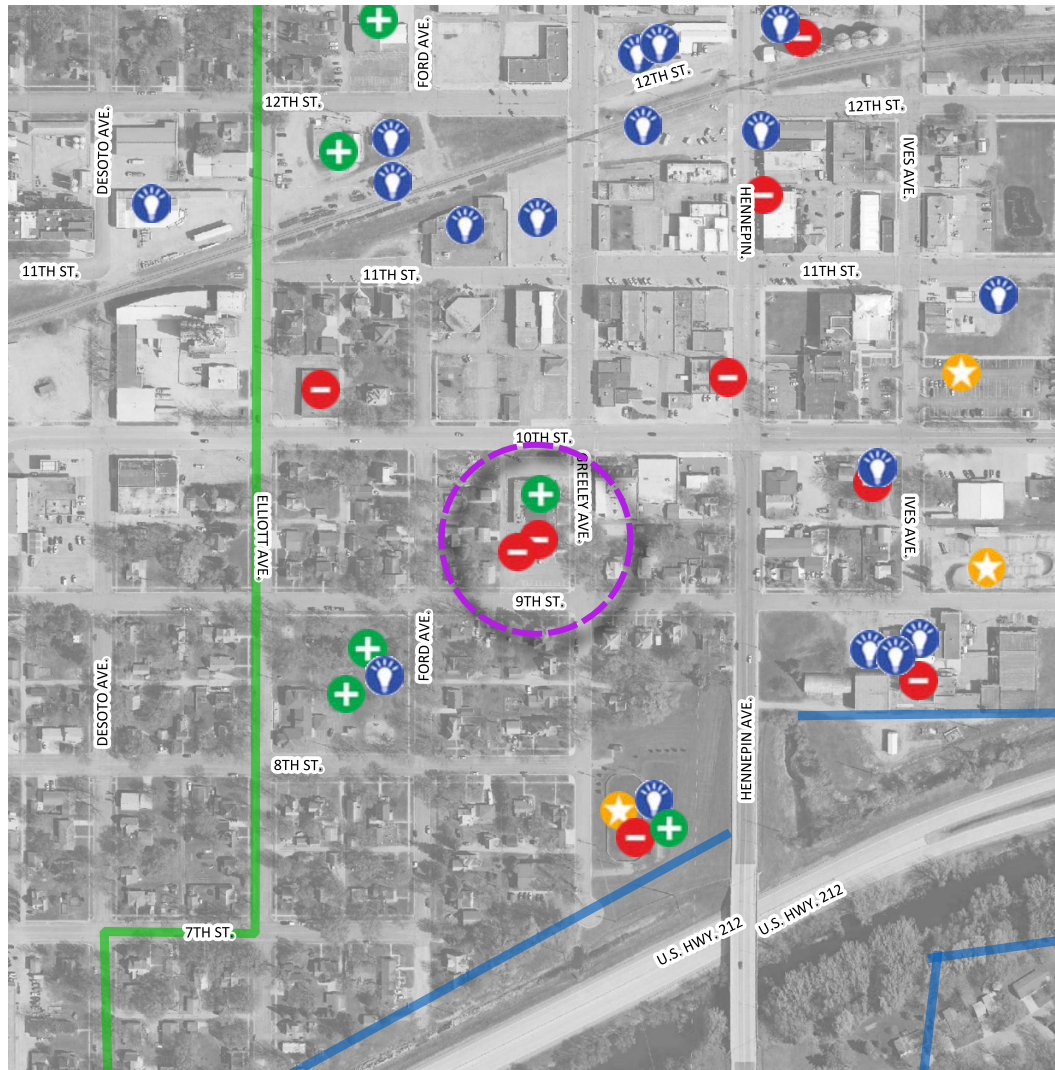
Wikimap - FINAL REPORT

39

City of Glencoe Comprehensive Plan

A problem or issue

Individual comments and final results obtained from the plan's WIKIMAPPING tool.



0 0.1 0.2 0.3 mi



TYPE: A problem or issue

Date created: 2021-04-06 18:32:01

Data feature 410500

Comment received:

The Police Department is running out of space.

Legend

POINT Information Received

- A good place / an asset
- A problem or issue
- An important destination
- Place to focus investment

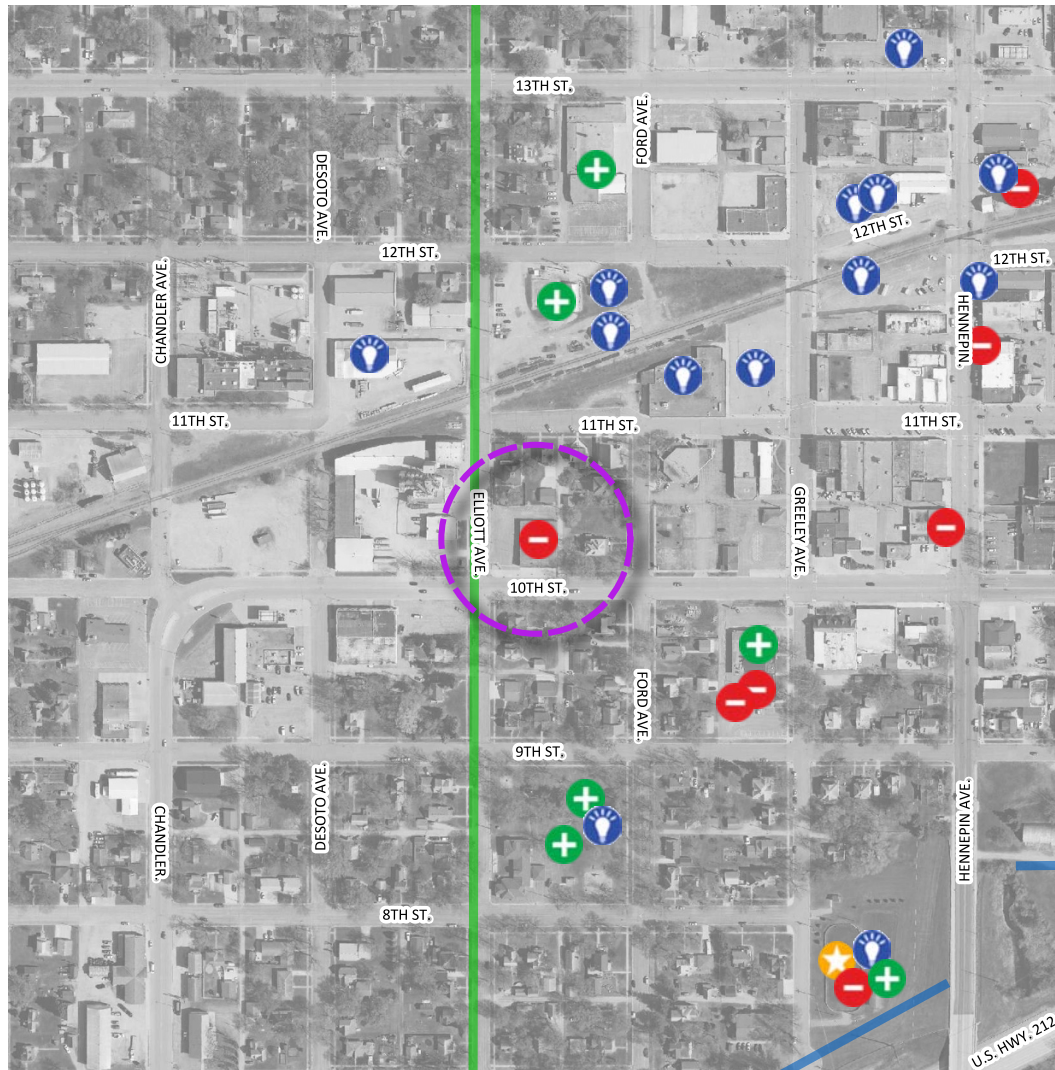
LINE Information Received

- A new BIKING route
- A new WALKING route

City of Glencoe Comprehensive Plan

A problem or issue

Individual comments and final results obtained from the plan's WIKIMAPPING tool.



0 0.1 0.2 0.3 mi



TYPE: A problem or issue

Date created: 2021-04-06 18:31:26

Data feature 410499

Comment received:

The fire department is running out of space.

Legend

POINT Information Received

- A good place / an asset
- A problem or issue
- An important destination
- Place to focus investment

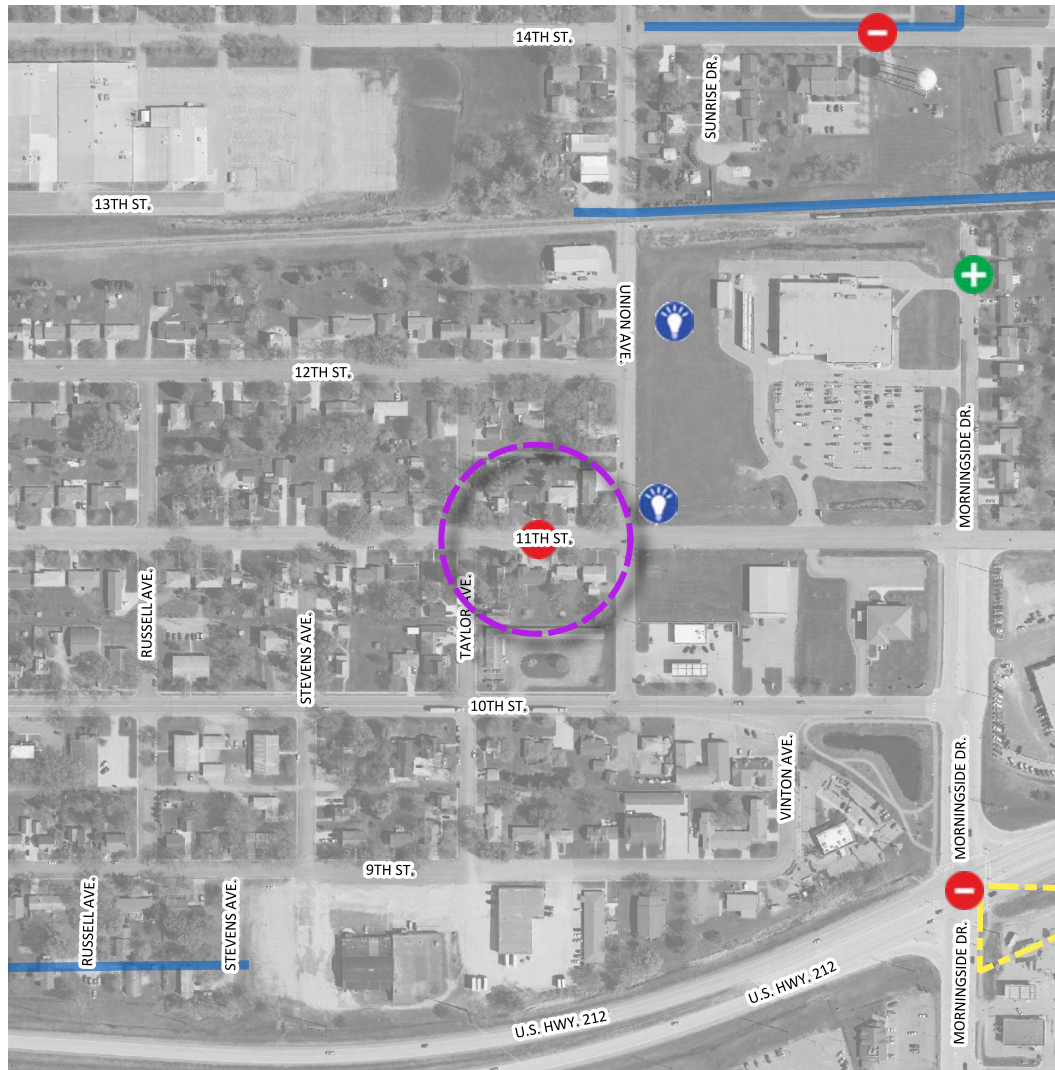
LINE Information Received

- A new BIKING route
- A new WALKING route

City of Glencoe Comprehensive Plan

A problem or issue

Individual comments and final results obtained from the plan's WIKIMAPPING tool.



TYPE: A problem or issue

Date created: 2021-04-06 18:01:43

Data feature 410498

Comment received:

Stop trucks and speeders on 11th St E. Create paint striped traffic lanes(same as 10th St) that would slow traffic for pedestrian safety and create bike lanes.

Legend

POINT Information Received

- A good place / an asset
- A problem or issue
- An important destination
- Place to focus investment

LINE Information Received

- A new BIKING route
- A new WALKING route

City of Glencoe Comprehensive Plan

A problem or issue

Individual comments and final results obtained from the plan's WIKIMAPPING tool.



0 0.1 0.2 0.3 mi



TYPE: A problem or issue

Date created: 2021-03-18 16:07:29

Data feature 409870

Comment received:

Clean up the trees along Hwy 212 for a more inviting feel into our city. Also have an opening in the trees to allow for a view of the golf course.

Legend

POINT Information Received

- A good place / an asset
- A problem or issue
- An important destination
- Place to focus investment

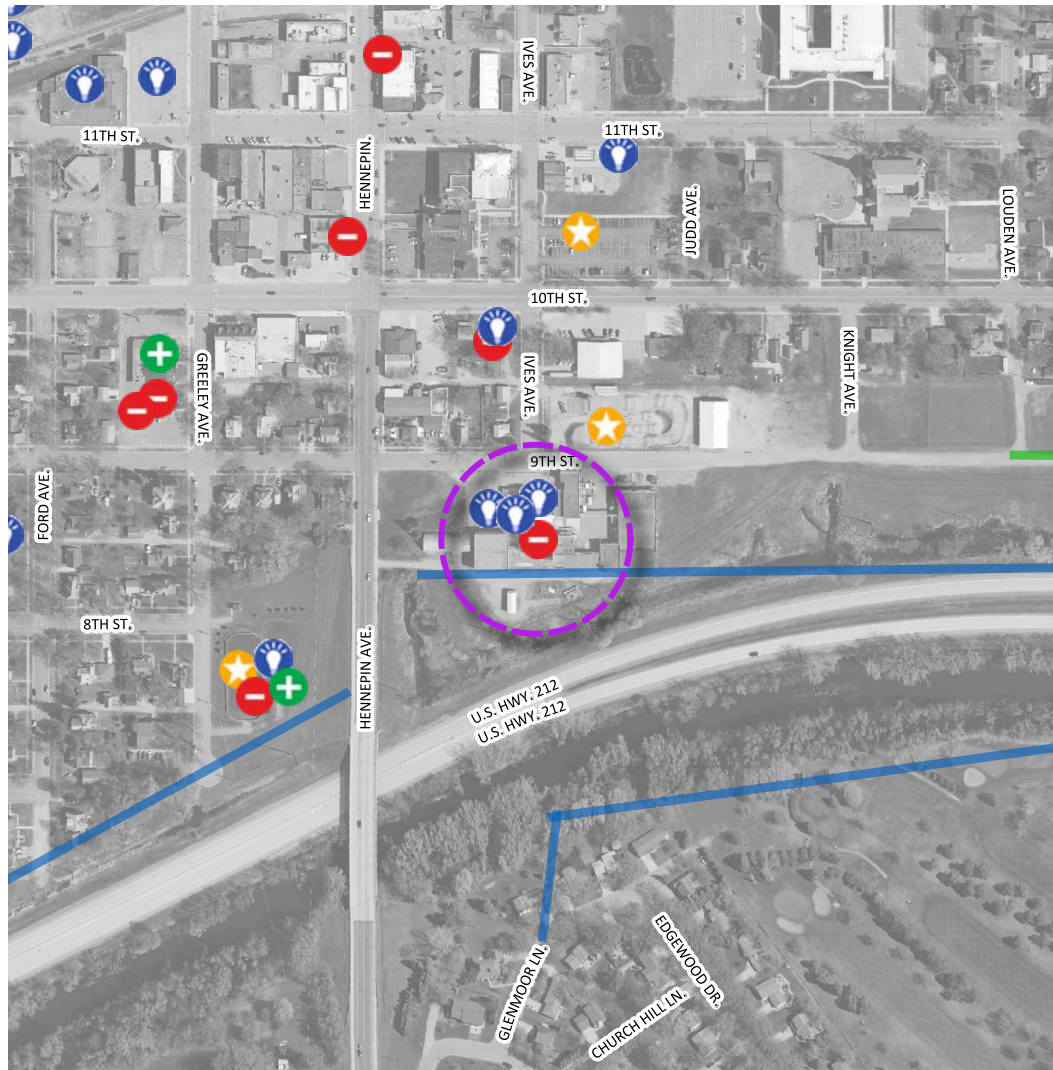
LINE Information Received

- A new BIKING route
- A new WALKING route

City of Glencoe Comprehensive Plan

A problem or issue

Individual comments and final results obtained from the plan's WIKIMAPPING tool.



TYPE: A problem or issue

Date created: 2020-11-20 21:12:43

Data feature 406440

Comment received:

Old Creamery Site

Legend

POINT Information Received

- A good place / an asset
- A problem or issue
- An important destination
- Place to focus investment

LINE Information Received

- A new BIKING route
- A new WALKING route

Individual comments and final results obtained from the plan's WIKIMAPPING tool.



TYPE: A problem or issue

Date created: 2021-02-09 13:36:44

Data feature 408481

Comment received:

Make this area look more appealing (on both sides of 212), more inviting as you drive into town.

Legend

POINT Information Received

+

A good place / an asset

-

A problem or issue

★

An important destination

💡

Place to focus investment

LINE Information Received

—

A new BIKING route

—

A new WALKING route

City of Glencoe Comprehensive Plan

A problem or issue

Individual comments and final results obtained from the plan's WIKIMAPPING tool.



0 0.1 0.2 0.3 mi



TYPE: A problem or issue

Date created: 2020-11-30 02:09:43

Data feature 406728

Comment received:

we need to beautify the 212 corridor through town
mow ditches remove some of the trees etc. What can be done
on the creekside??

Legend

POINT Information Received

- A good place / an asset
- A problem or issue
- An important destination
- Place to focus investment

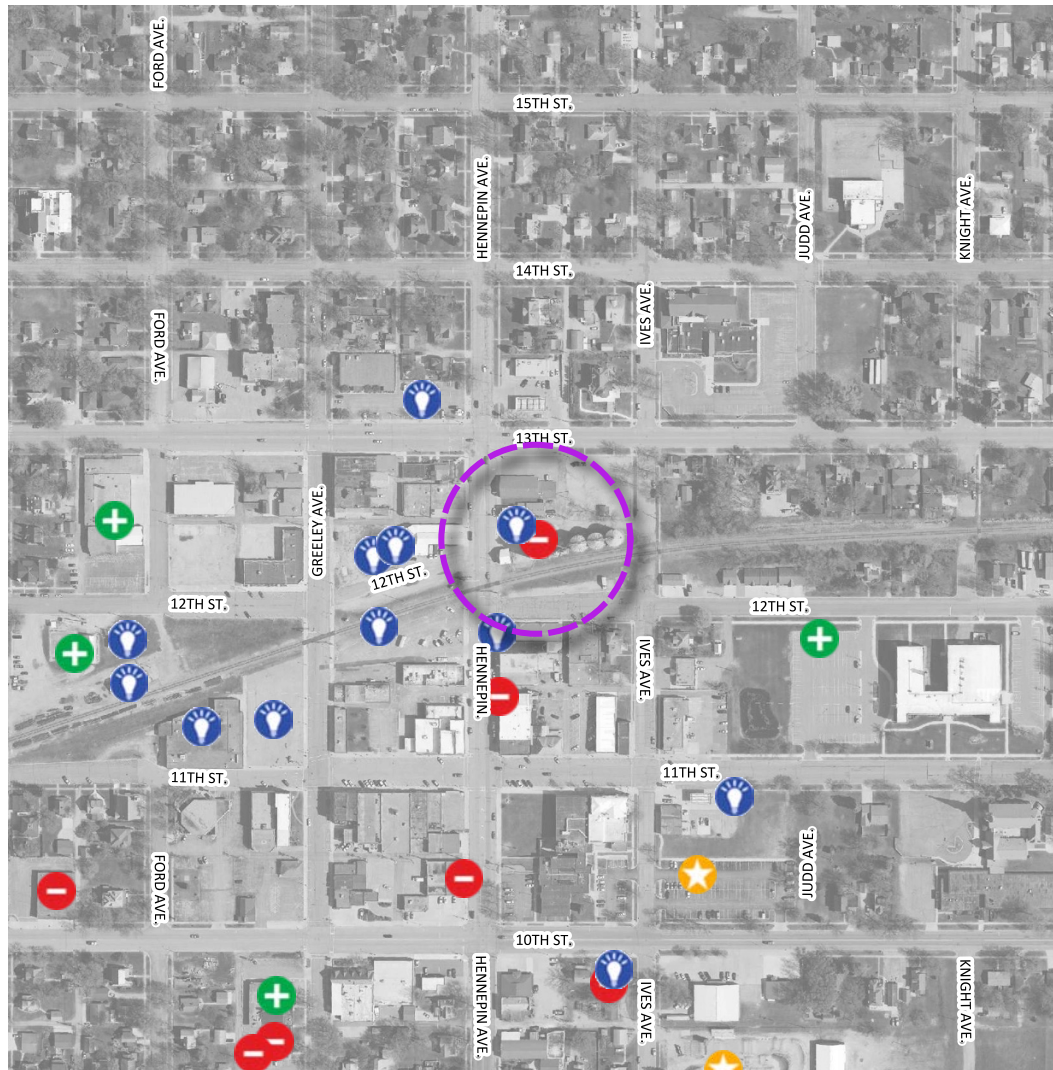
LINE Information Received

- A new BIKING route
- A new WALKING route

City of Glencoe Comprehensive Plan

A problem or issue

Individual comments and final results obtained from the plan's WIKIMAPPING tool.



0 0.1 0.2 0.3 mi



TYPE: A problem or issue

Date created: 2020-11-27 21:52:09

Data feature 406678

Comment received:

This area needs to be cleaned up! Could be a cute focal point keeping the tall elevator but ridding of the bins. Could house a visitor center, candy shop, gifts, seasonal items - think "country store."

Legend

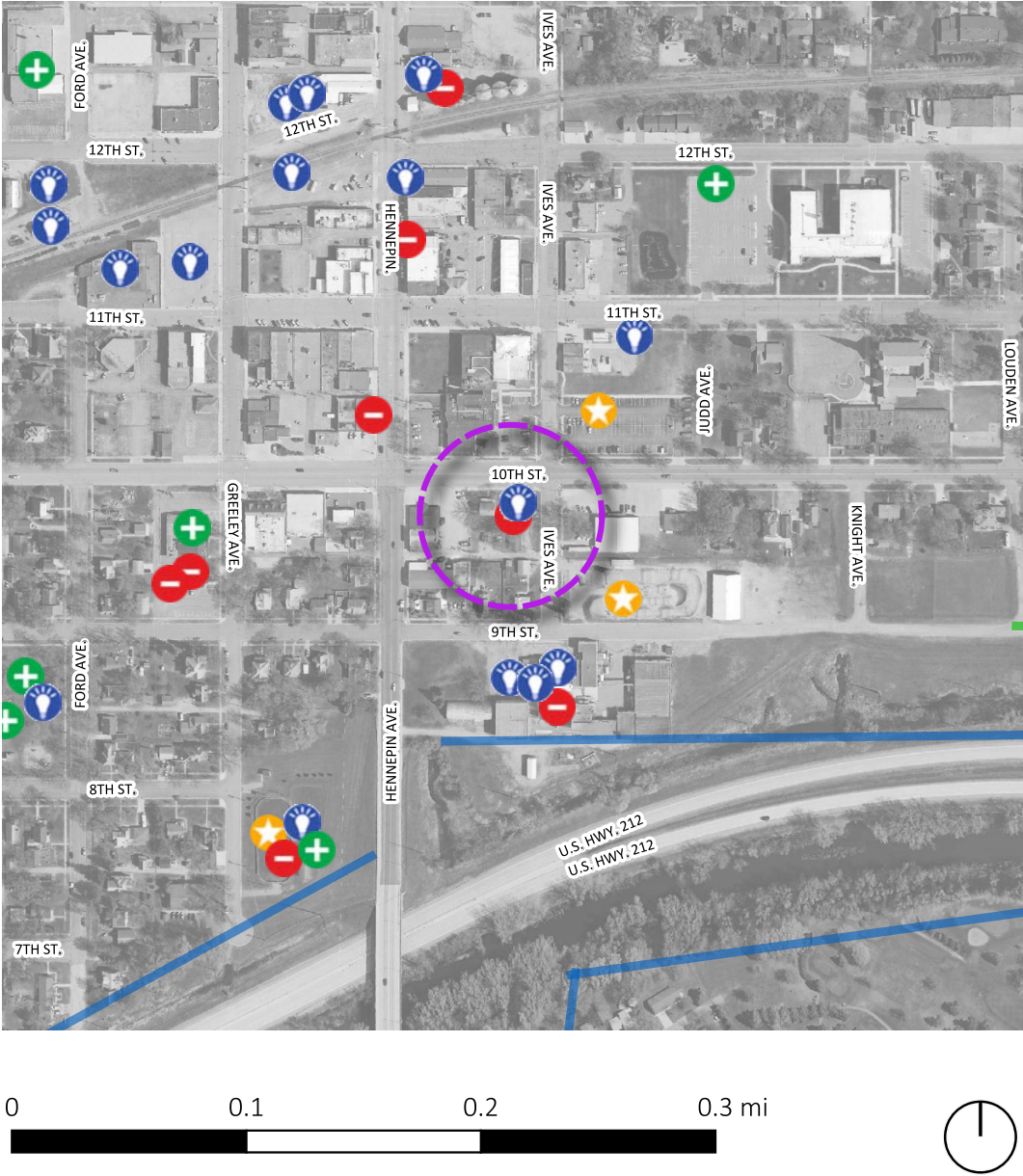
POINT Information Received

- A good place / an asset
- A problem or issue
- An important destination
- Place to focus investment

LINE Information Received

- A new BIKING route
- A new WALKING route

Individual comments and final results obtained from the plan's WIKIMAPPING tool.



TYPE: A problem or issue

Date created: 2021-01-14 16:23:43

Data feature 407763

Comment received:

These bins should be moved to a new site on not such a busy road. 10th is one of the busiest streets in town and the bins are an eye sore. Discussion a year ago to move them east of the creamery which would be a much better spot.

Legend

POINT Information Received	LINE Information Received
A good place / an asset	A new BIKING route
A problem or issue	A new WALKING route
An important destination	
Place to focus investment	

Individual comments and final results obtained from the plan's WIKIMAPPING tool.



TYPE: A problem or issue

Date created: 2020-12-01 15:25:25

Data feature 406769

Comment received:

The majority of these mobile homes wouldn't pass inspection for occupancy on either side of the tracks. The state would have to come in and decide.

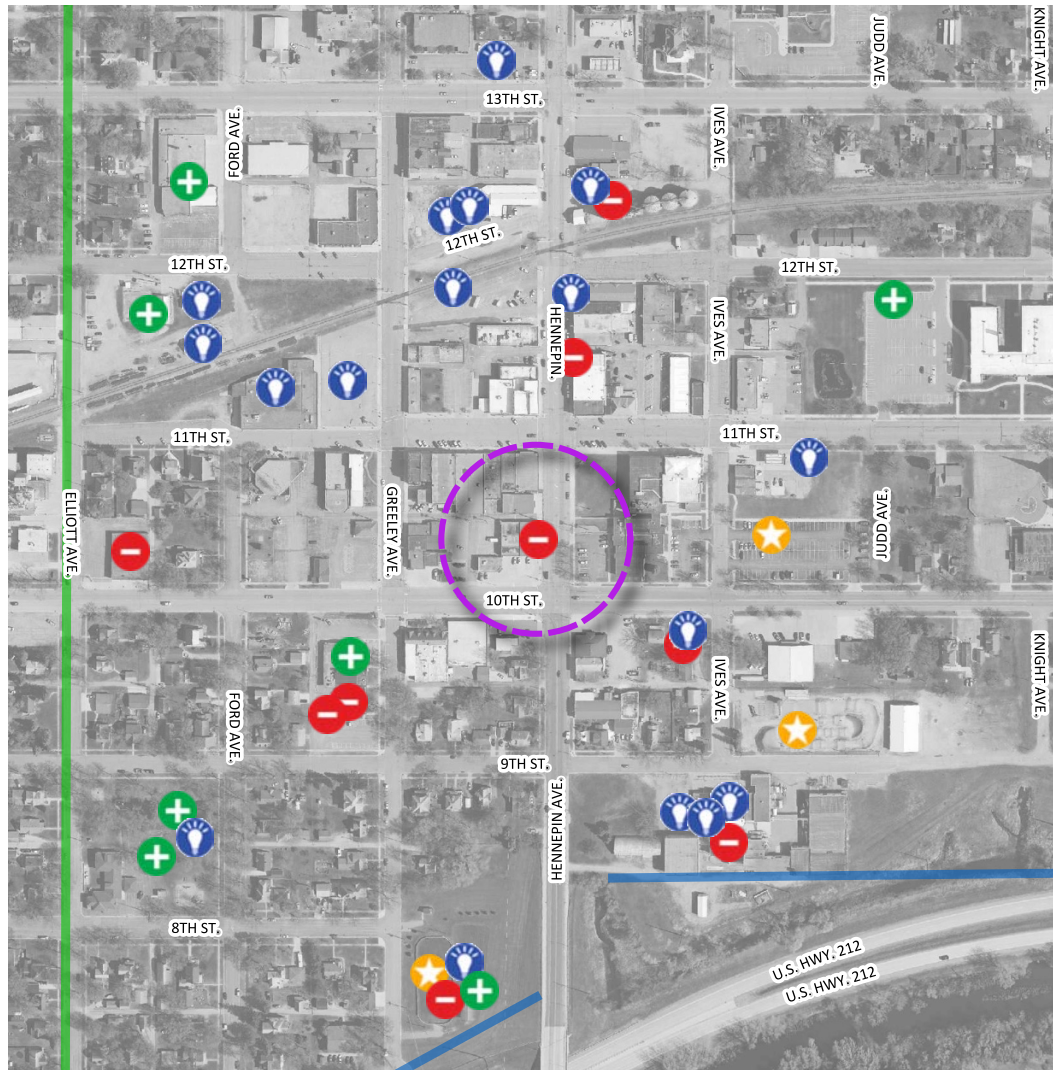
Legend

POINT Information Received	LINE Information Received
A good place / an asset	A new BIKING route
A problem or issue	A new WALKING route
An important destination	
Place to focus investment	

City of Glencoe Comprehensive Plan

A problem or issue

Individual comments and final results obtained from the plan's WIKIMAPPING tool.



0 0.1 0.2 0.3 mi



TYPE: A problem or issue

Date created: 2020-12-01 15:19:41

Data feature 406768

Comment received:

old vinyl siding and curling shingles should be replaced to help beautify the downtown. New windows could help also.

Legend

POINT Information Received

- A good place / an asset
- A problem or issue
- An important destination
- Place to focus investment

LINE Information Received

- A new BIKING route
- A new WALKING route