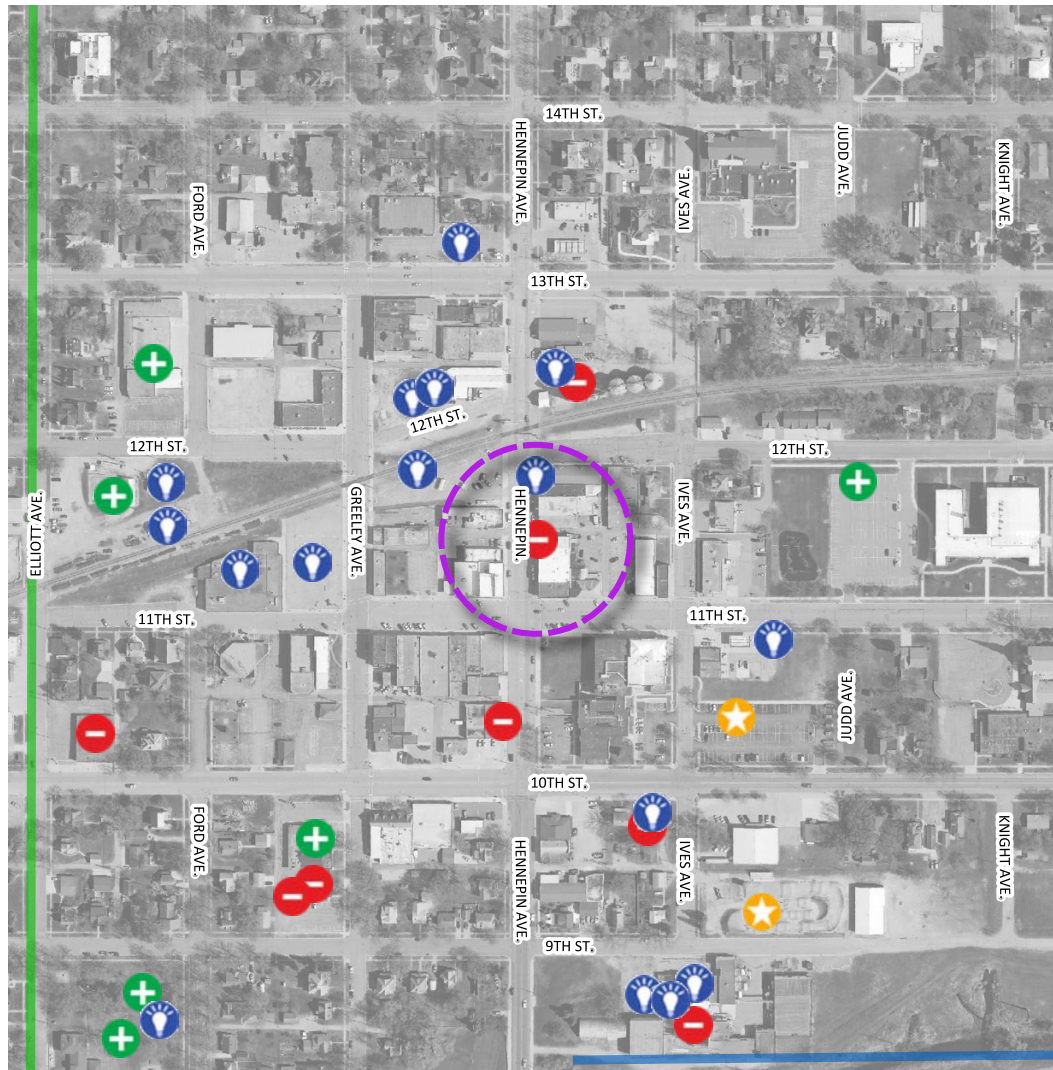


City of Glencoe Comprehensive Plan

A problem or issue

Individual comments and final results obtained from the plan's WIKIMAPPING tool.



0 0.1 0.2 0.3 mi



TYPE: A problem or issue

Date created: 2020-12-01 15:17:07

Data feature 406767

Comment received:

cleanup front and side of the theater building. Old wires and non-working window air conditioners, doors, windows, etc. maybe show something seasonal inside the glass doors. make it look nice.

Legend

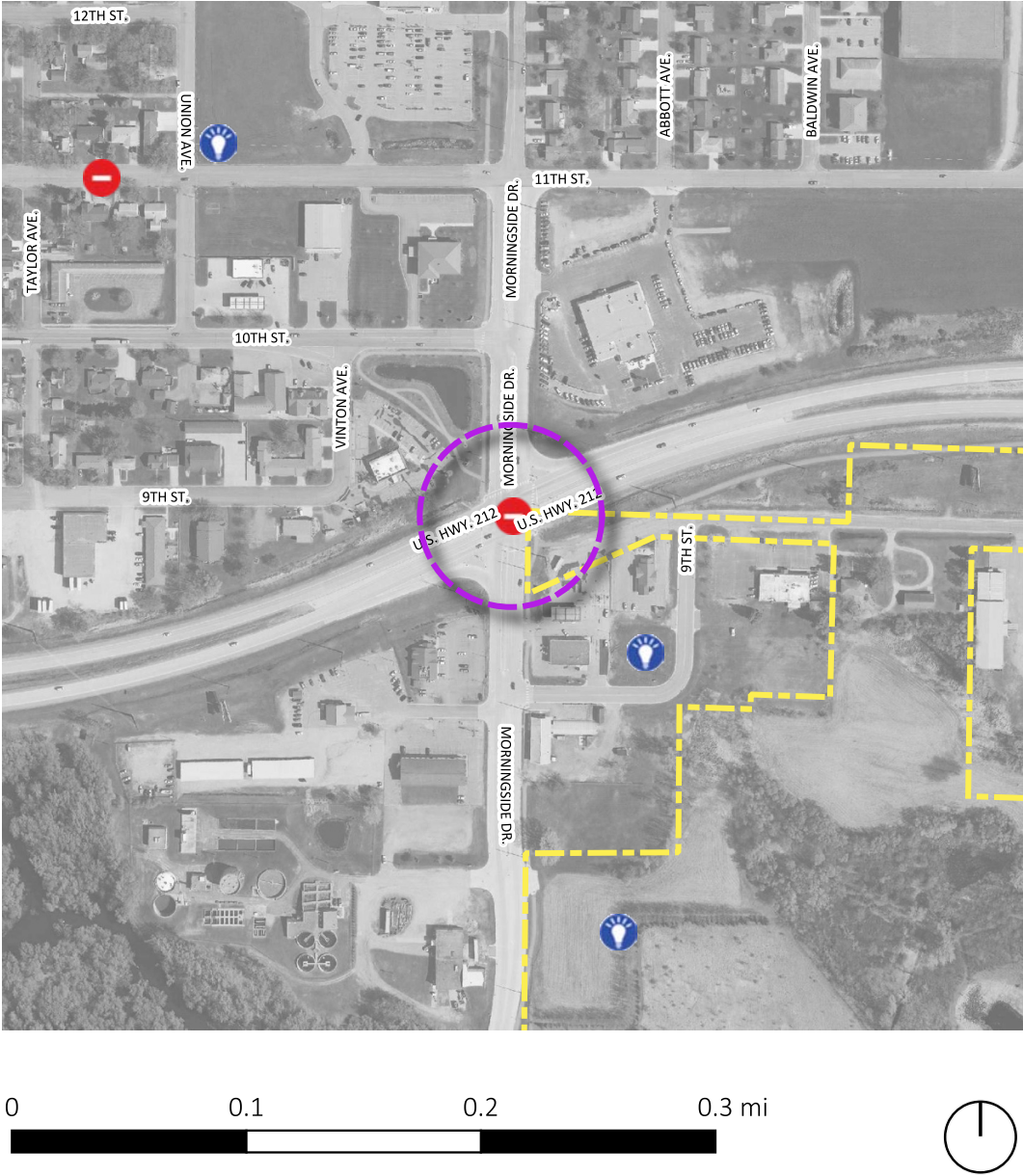
POINT Information Received

- A good place / an asset
- A problem or issue
- An important destination
- Place to focus investment

LINE Information Received

- A new BIKING route
- A new WALKING route

Individual comments and final results obtained from the plan's WIKIMAPPING tool.



TYPE: A problem or issue

Date created: 2020-11-20 21:16:20

Data feature 406445

Comment received:

Highway 212 and Morningside

Legend

POINT Information Received

+

A good place / an asset

-

A problem or issue

★

An important destination

💡

Place to focus investment

LINE Information Received

—

A new BIKING route

—

A new WALKING route

City of Glencoe Comprehensive Plan

An important destination

Individual comments and final results obtained from the plan's WIKIMAPPING tool.



TYPE: An important destination

Date created: 2020-11-30 17:06:43

Data feature 406752

Comment received:

Great place for tailgating

Legend

POINT Information Received

+

A good place / an asset

-

A problem or issue

★

An important destination

💡

Place to focus investment

LINE Information Received

A new BIKING route

A new WALKING route

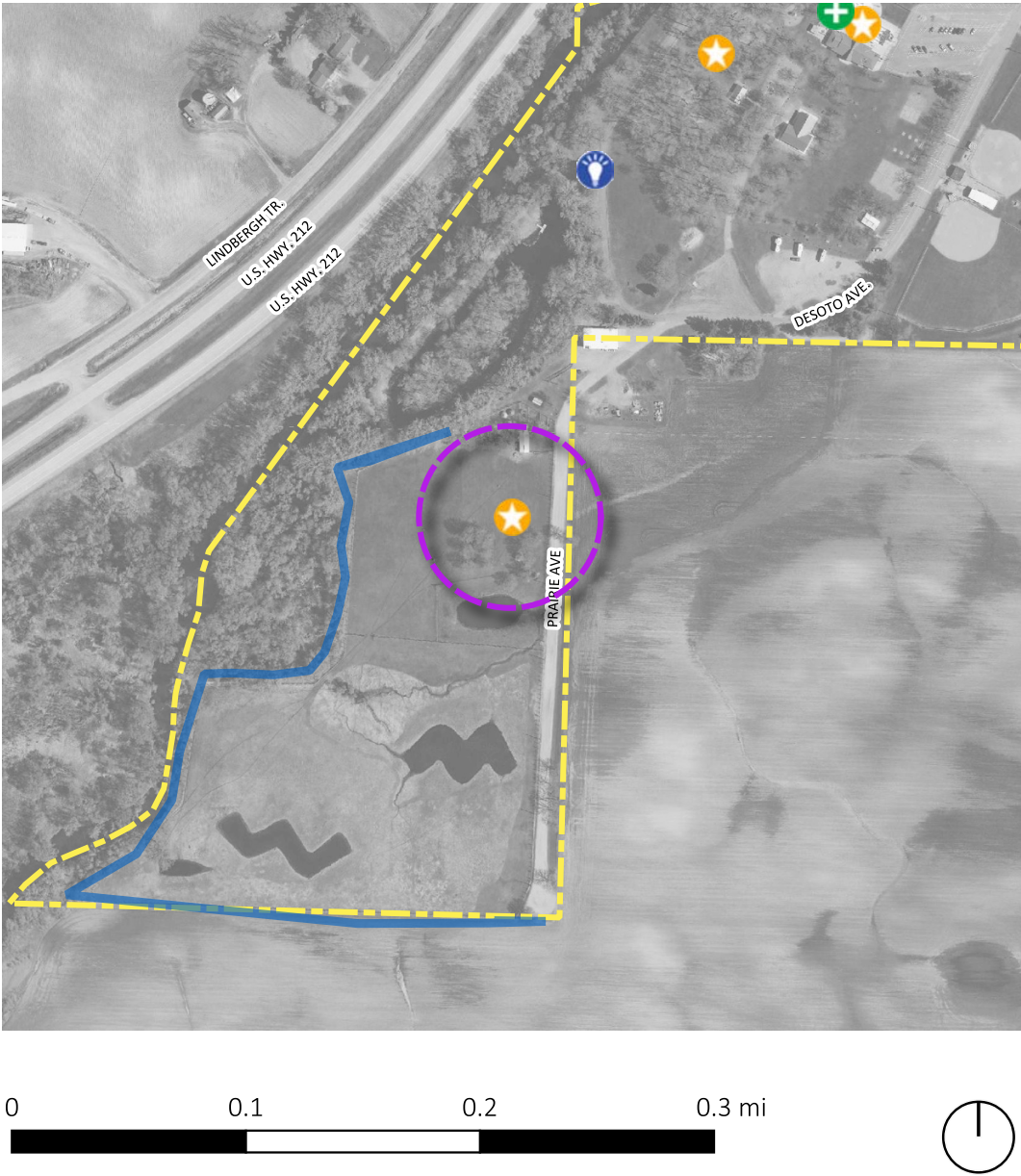
Wikimap - FINAL REPORT

53

City of Glencoe Comprehensive Plan

An important destination

Individual comments and final results obtained from the plan's WIKIMAPPING tool.



TYPE: An important destination

Date created: 2020-11-30 02:56:50

Data feature 406732

Comment received:

Wild life sanctuary. taken care of by sportsmans club?

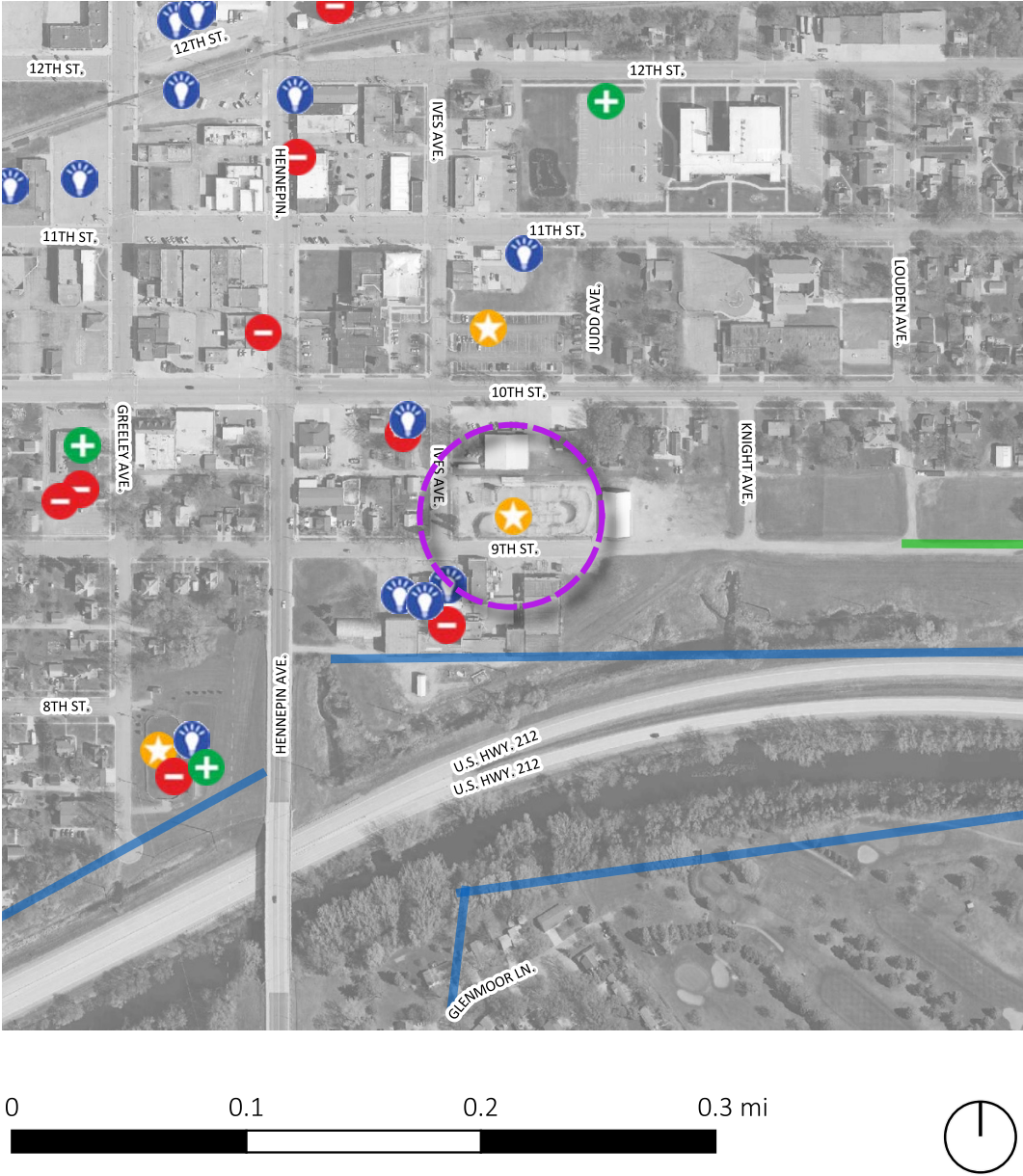
Legend

POINT Information Received	LINE Information Received
A good place / an asset	A new BIKING route
A problem or issue	A new WALKING route
An important destination	
Place to focus investment	

City of Glencoe Comprehensive Plan

An important destination

Individual comments and final results obtained from the plan's WIKIMAPPING tool.



TYPE: An important destination

Date created: 2020-11-20 21:13:02

Data feature 406441

Comment received:

BMX Track

Legend

POINT Information Received

+

A good place / an asset

-

A problem or issue

★

An important destination

💡

Place to focus investment

LINE Information Received

—

A new BIKING route

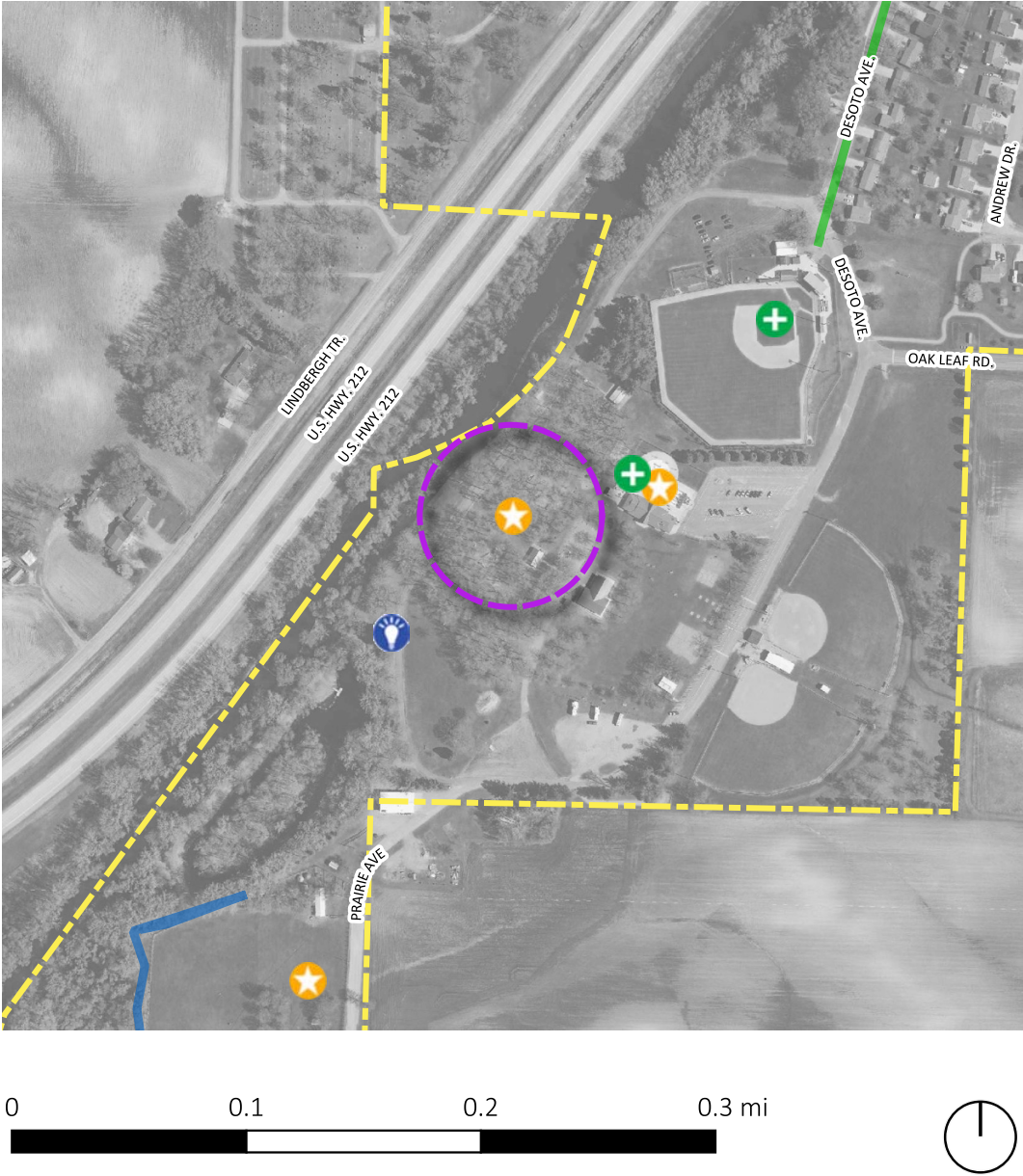
—

A new WALKING route

City of Glencoe Comprehensive Plan

An important destination

Individual comments and final results obtained from the plan's WIKIMAPPING tool.



TYPE: An important destination

Date created: 2020-11-20 21:06:37

Data feature 406436

Comment received:

Campground

Legend

POINT Information Received	LINE Information Received
A good place / an asset	A new BIKING route
A problem or issue	A new WALKING route
An important destination	
Place to focus investment	

City of Glencoe Comprehensive Plan

An important destination

Individual comments and final results obtained from the plan's WIKIMAPPING tool.



TYPE: An important destination

Date created: 2020-11-20 21:06:07

Data feature 406435

Comment received:

Swimming Pool

Legend

POINT Information Received	LINE Information Received
A good place / an asset	A new BIKING route
A problem or issue	A new WALKING route
An important destination	
Place to focus investment	

City of Glencoe Comprehensive Plan

An important destination

Individual comments and final results obtained from the plan's WIKIMAPPING tool.



TYPE: An important destination

Date created: 2020-11-25 02:08:25

Data feature 406521

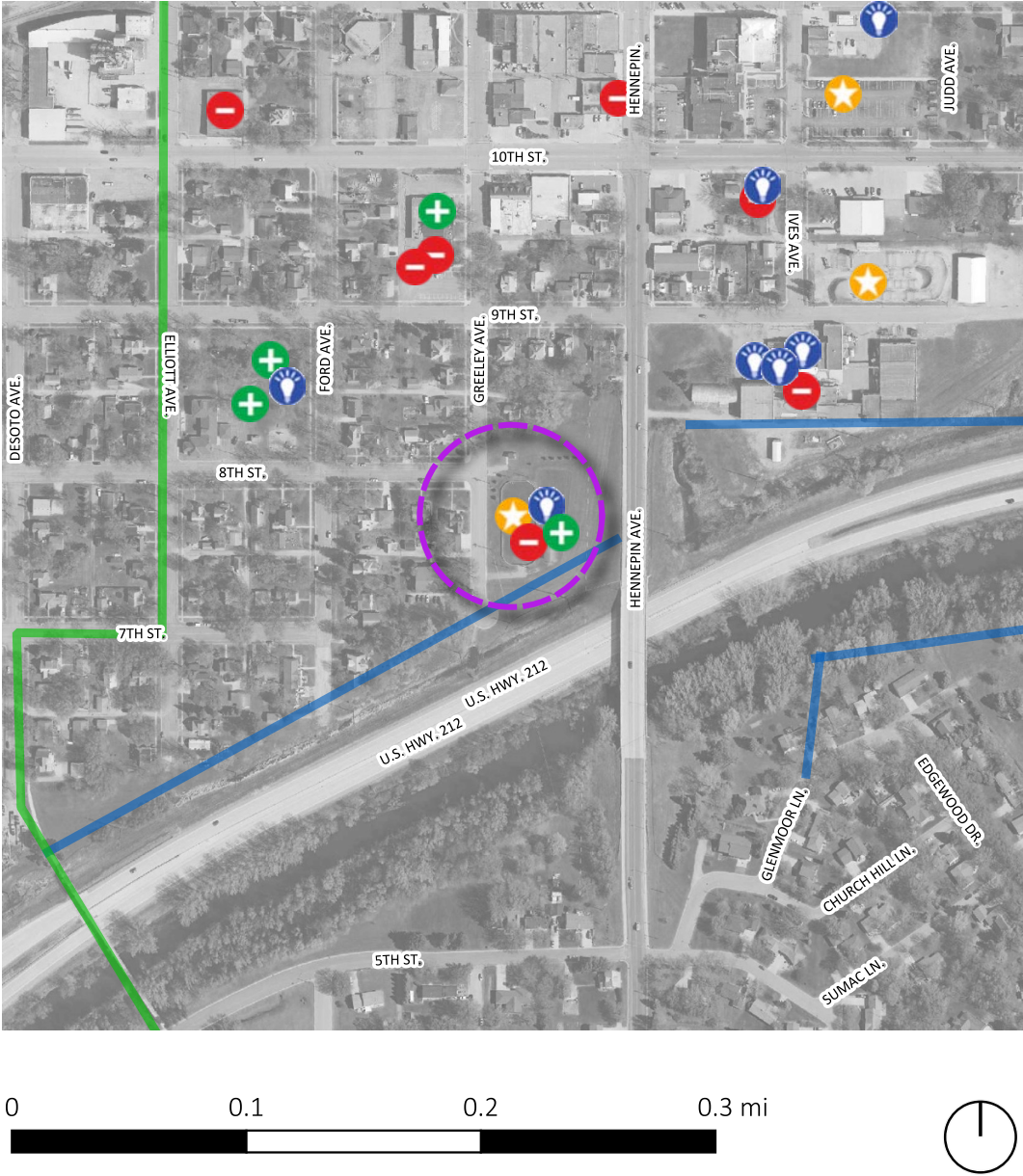
Comment received:

Archery Range

Legend

POINT Information Received	LINE Information Received
A good place / an asset	A new BIKING route
A problem or issue	A new WALKING route
An important destination	
Place to focus investment	

Individual comments and final results obtained from the plan's WIKIMAPPING tool.



TYPE: An important destination

Date created: 2020-11-24 13:23:32

Data feature 406518

Comment received:

Winter Skating/Sledding w/Warming House

Legend

POINT Information Received

+

A good place / an asset

-

A problem or issue

★

An important destination

💡

Place to focus investment

LINE Information Received

—

A new BIKING route

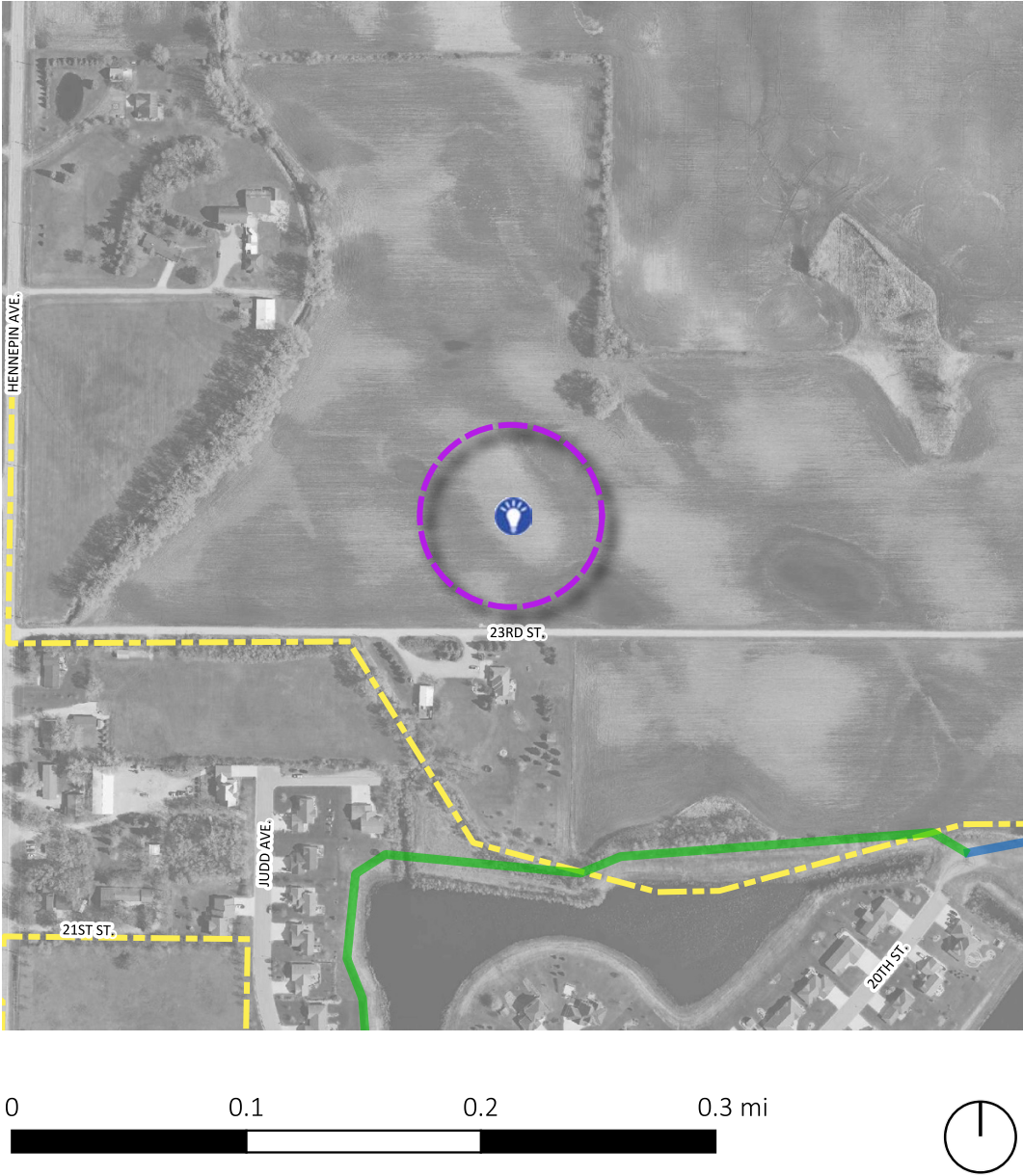
—

A new WALKING route

City of Glencoe Comprehensive Plan

Place to focus investment

Individual comments and final results obtained from the plan's WIKIMAPPING tool.



TYPE: Place to focus investment

Date created: 2020-11-28 17:05:07

Data feature 406696

Comment received:

Future residential expansion. The entire area from Hennepin to Falcon bounded by 120th St on the north. This would require huge infrastructure investment.

Legend

POINT Information Received

+

A good place / an asset

-

A problem or issue

★

An important destination

💡

Place to focus investment

LINE Information Received

—

A new BIKING route

—

A new WALKING route

City of Glencoe Comprehensive Plan

Place to focus investment

Individual comments and final results obtained from the plan's WIKIMAPPING tool.



TYPE: Place to focus investment

Date created: 2020-11-28 17:05:21
Data feature 406697

Comment received:
Future residential expansion. The entire area from Hennepin to Falcon bounded by 120th St on the north. This would require huge infrastructure investment.

Legend

POINT Information Received	LINE Information Received
A good place / an asset	A new BIKING route
A problem or issue	A new WALKING route
An important destination	
Place to focus investment	

City of Glencoe Comprehensive Plan

Place to focus investment

Individual comments and final results obtained from the plan's WIKIMAPPING tool.



TYPE: Place to focus investment

Date created: 2020-11-28 17:05:42

Data feature 406698

Comment received:

Future residential expansion. The entire area from Hennepin to Falcon bounded by 120th St on the north. This would require huge infrastructure investment.

Legend

POINT Information Received

+

A good place / an asset

-

A problem or issue

★

An important destination

💡

Place to focus investment

LINE Information Received

A new BIKING route

A new WALKING route

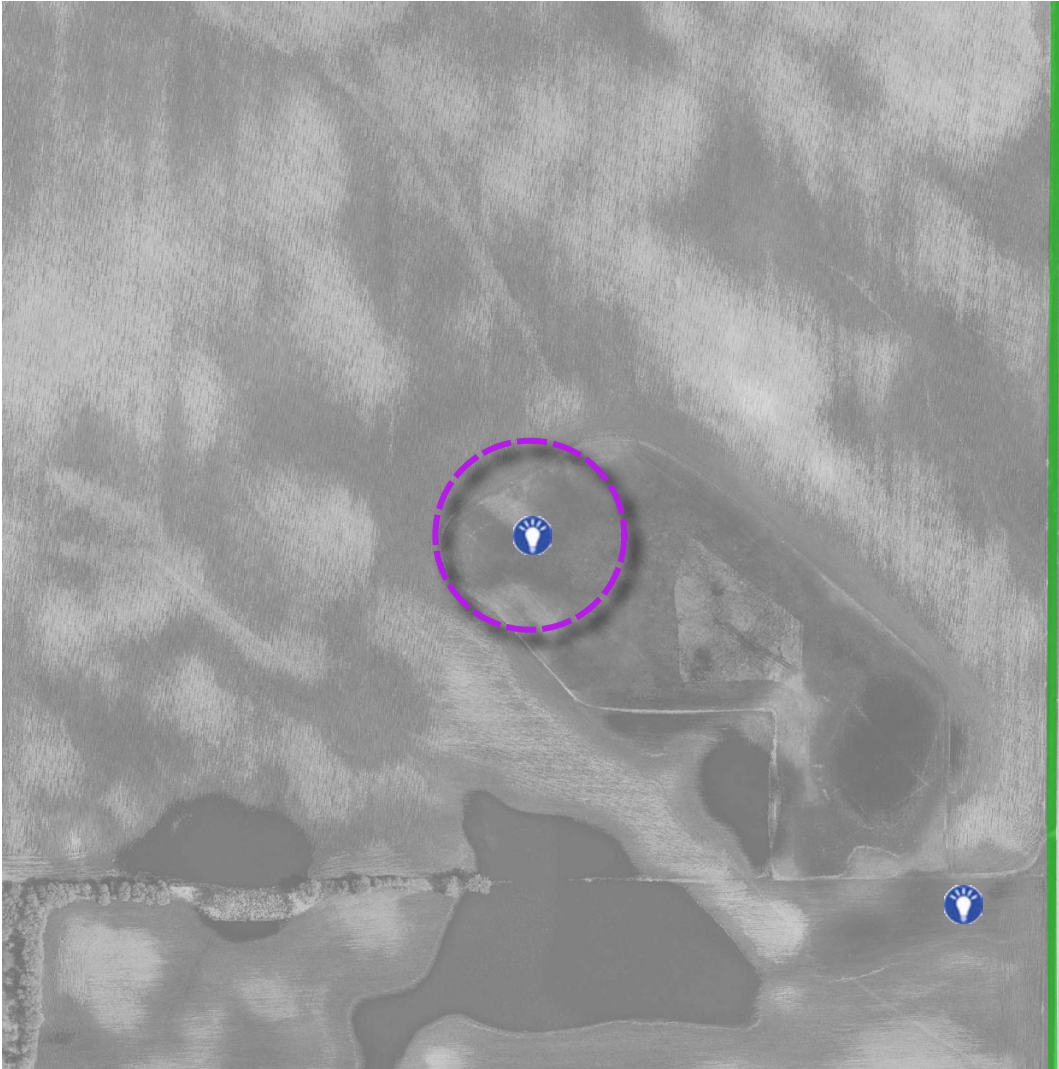
Wikimap - FINAL REPORT

62

City of Glencoe Comprehensive Plan

Place to focus investment

Individual comments and final results obtained from the plan's WIKIMAPPING tool.



TYPE: Place to focus investment

Date created: 2020-11-28 17:06:07
Data feature 406699

Comment received:
Future residential expansion. The entire area from Hennepin to Falcon bounded by 120th St on the north. This would require huge infrastructure investment.

Legend

POINT Information Received

+

A good place / an asset

-

A problem or issue

★

An important destination

💡

Place to focus investment

LINE Information Received

A new BIKING route

A new WALKING route

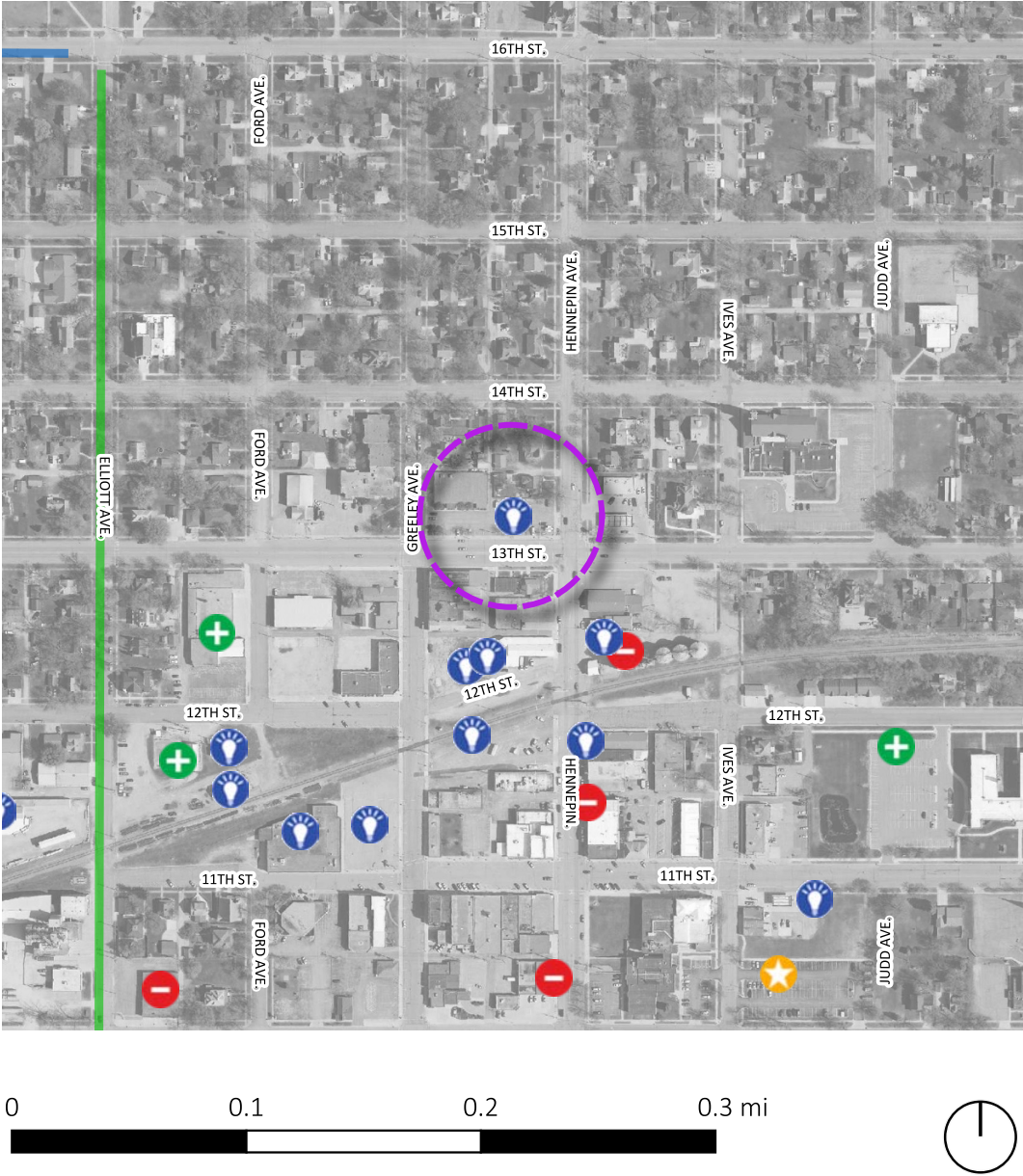
Wikimap - FINAL REPORT

63

City of Glencoe Comprehensive Plan

Place to focus investment

Individual comments and final results obtained from the plan's WIKIMAPPING tool.



TYPE: Place to focus investment

Date created: 2020-11-28 17:13:03

Data feature 406700

Comment received:

Retail or restaurant/fast food spot. There is plenty of parking.

Legend

POINT Information Received

+

A good place / an asset

-

A problem or issue

★

An important destination

💡

Place to focus investment

LINE Information Received

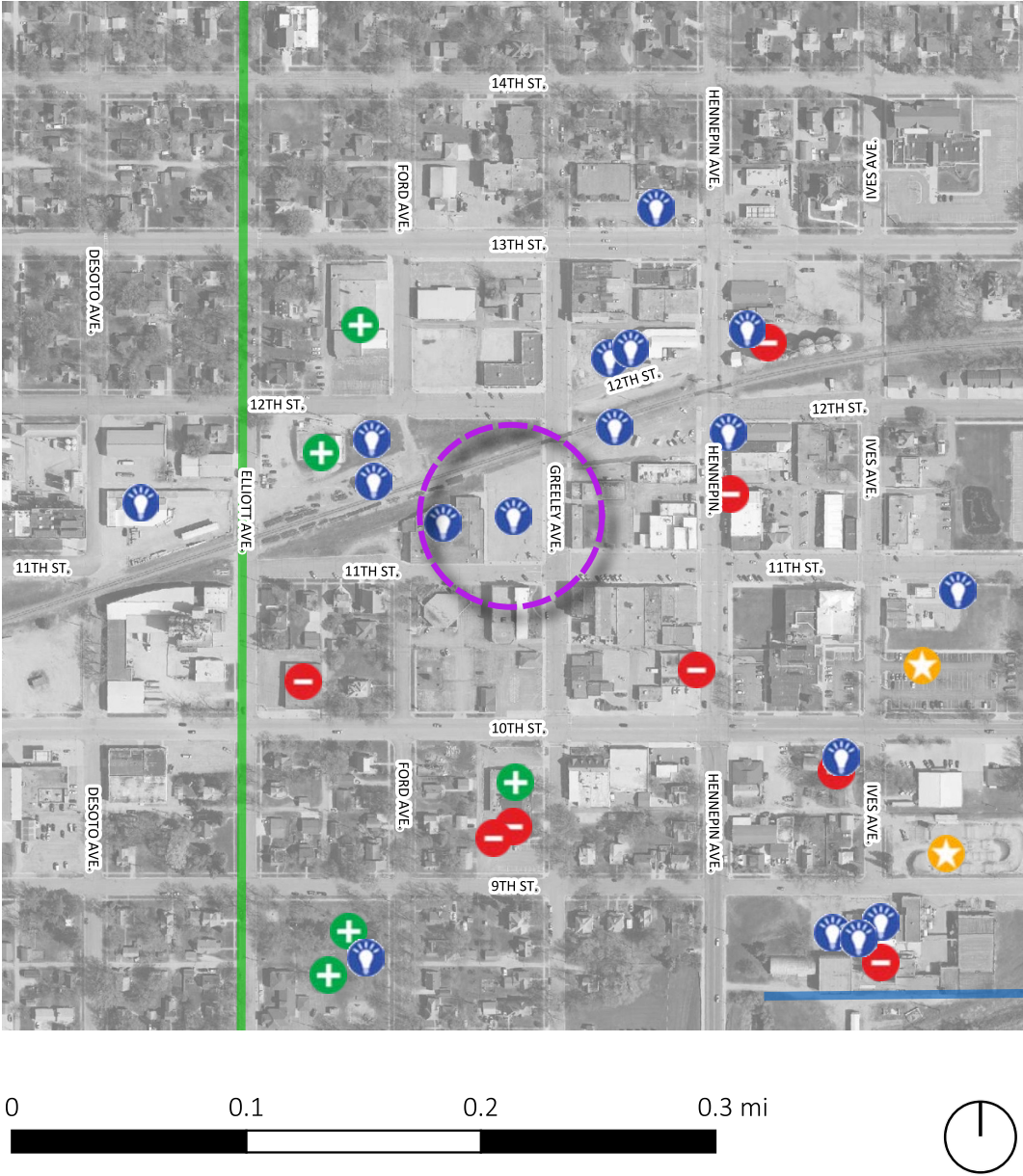
—

A new BIKING route

—

A new WALKING route

Individual comments and final results obtained from the plan's WIKIMAPPING tool.



TYPE: Place to focus investment

Date created: 2020-11-28 17:18:34

Data feature 406701

Comment received:

Multilevel Building - retail on street level, with apartment rentals on second and third levels, including underground and lot parking.

Legend

POINT Information Received	LINE Information Received
A good place / an asset	A new BIKING route
A problem or issue	A new WALKING route
An important destination	
Place to focus investment	

City of Glencoe Comprehensive Plan

Place to focus investment

Individual comments and final results obtained from the plan's WIKIMAPPING tool.



TYPE: Place to focus investment

Date created: 2020-11-28 16:56:58

Data feature 406695

Comment received:

Housing site. Multi story apartment building, sr/low income, pati homes etc.

Legend

POINT Information Received

+

A good place / an asset

-

A problem or issue

★

An important destination

💡

Place to focus investment

LINE Information Received

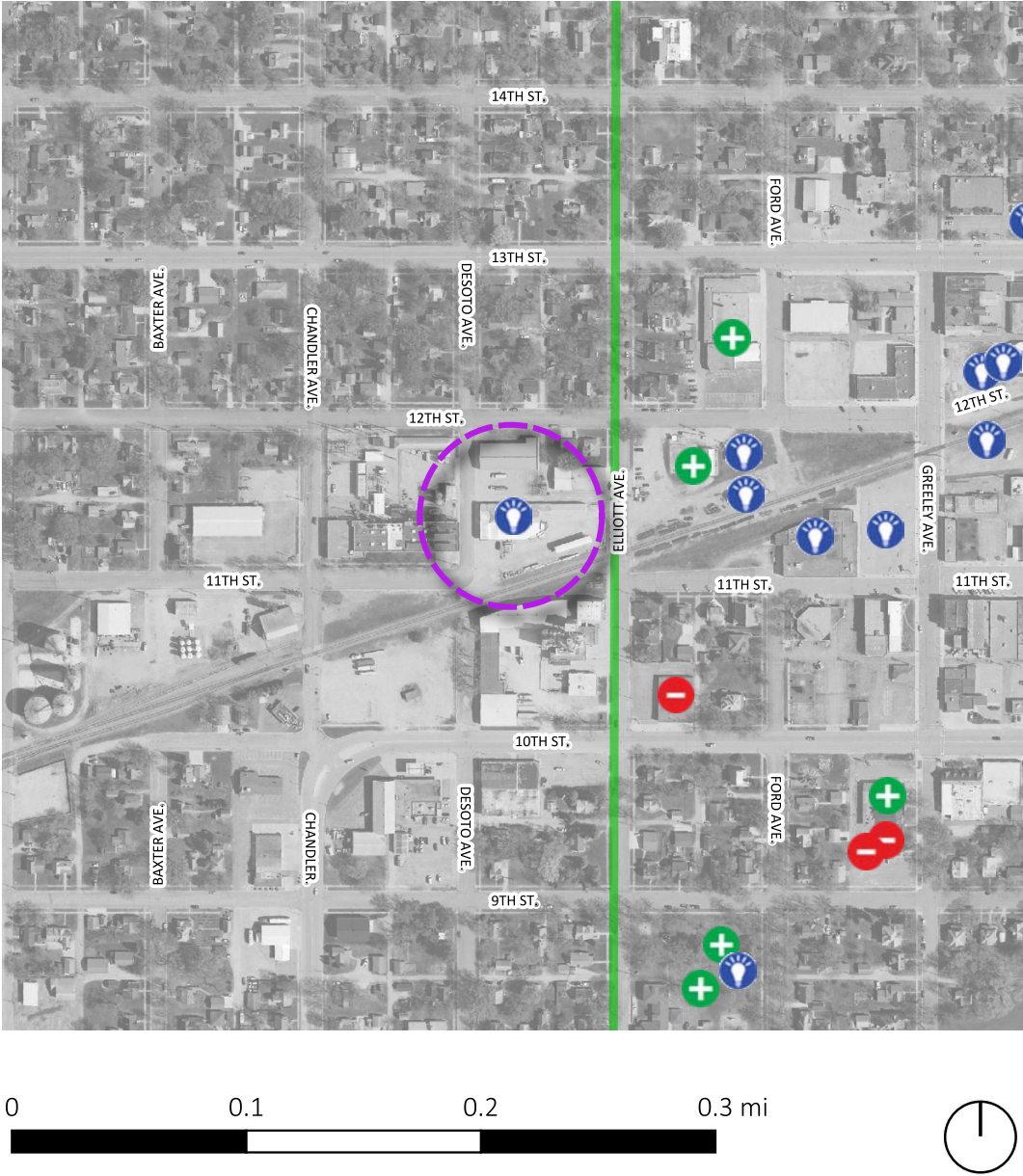
A new BIKING route

A new WALKING route

Wikimap - FINAL REPORT

66

Individual comments and final results obtained from the plan's WIKIMAPPING tool.



TYPE: Place to focus investment

Date created: 2020-11-28 14:14:52

Data feature 406691

Comment received:
its empty bring in a new business.

Legend

POINT Information Received

- A good place / an asset
- A problem or issue
- An important destination
- Place to focus investment

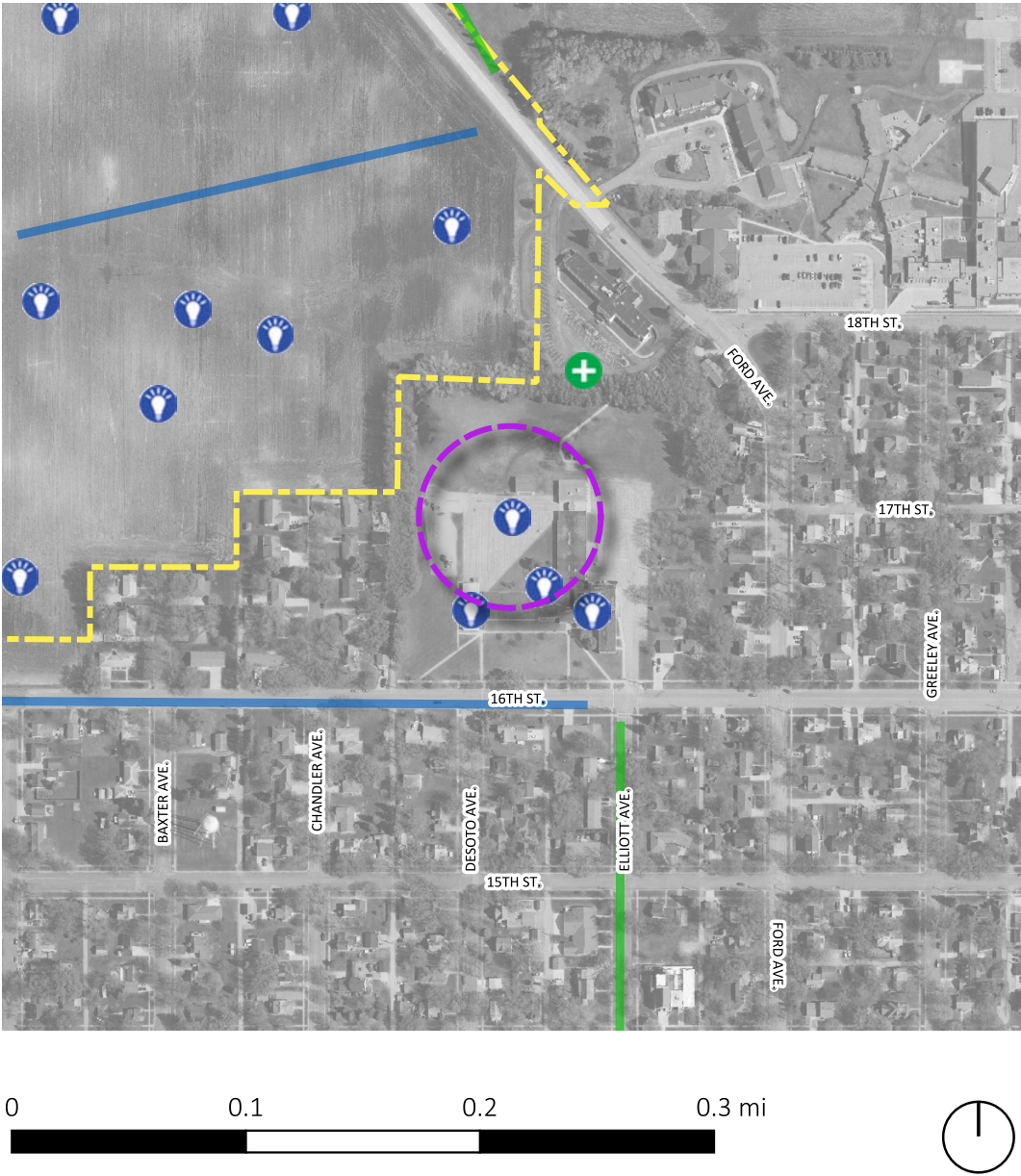
LINE Information Received

- A new BIKING route
- A new WALKING route

City of Glencoe Comprehensive Plan

Place to focus investment

Individual comments and final results obtained from the plan's WIKIMAPPING tool.



TYPE: Place to focus investment

Date created: 2020-11-27 22:48:42
Data feature 406680

Comment received:
Housing for "young seniors." Town homes (attached or detached), patio homes, etc. After downsizing, before assisted living.

Legend

POINT Information Received

+

A good place / an asset

-

A problem or issue

★

An important destination

💡

Place to focus investment

LINE Information Received

A new BIKING route

A new WALKING route

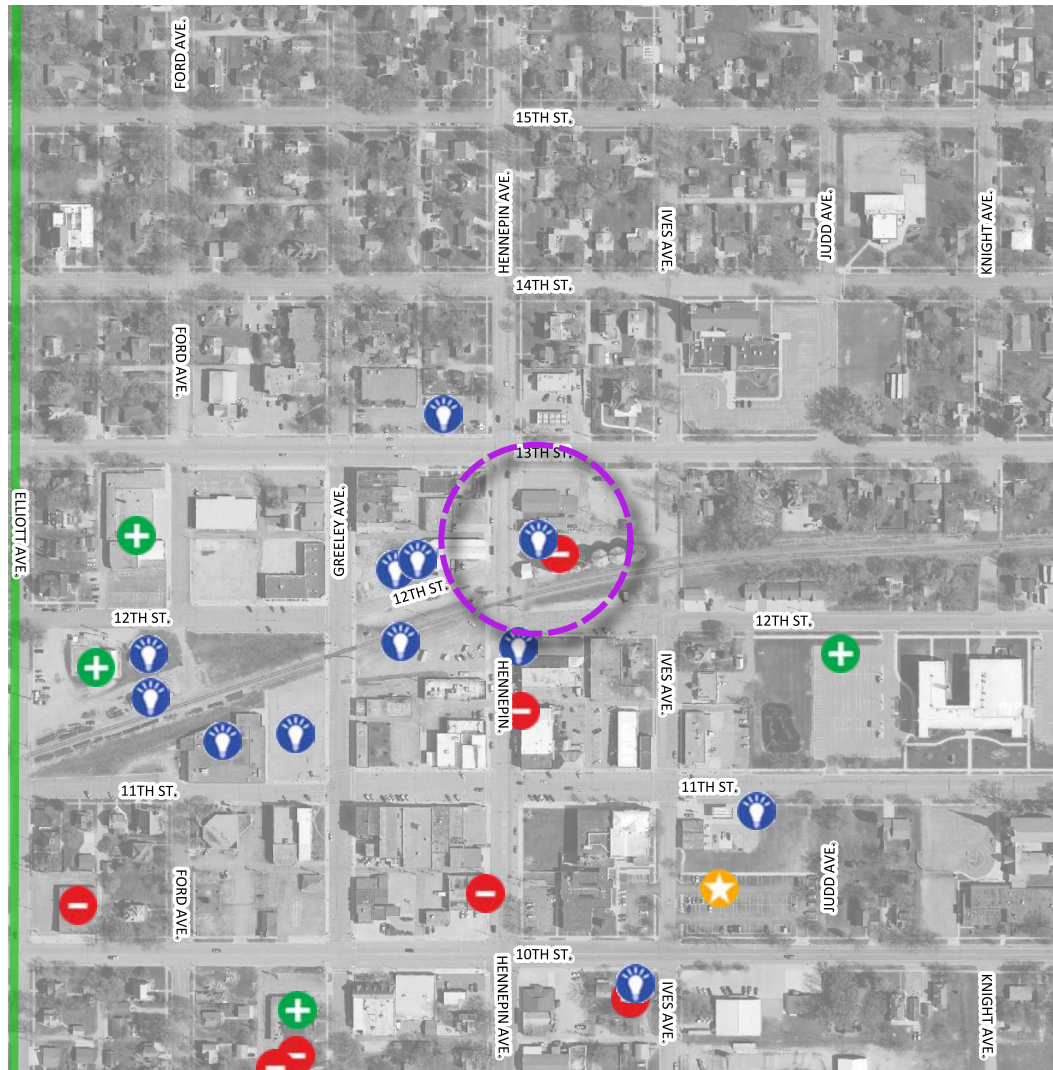
Wikimap - FINAL REPORT

68

City of Glencoe Comprehensive Plan

Place to focus investment

Individual comments and final results obtained from the plan's WIKIMAPPING tool.



TYPE: Place to focus investment

Date created: 2020-11-27 21:54:21

Data feature 406679

Comment received:

Remove bins, enhance tall elevator with lean-to type structure.
Retail area - destination shopping.

Legend

POINT Information Received

- A good place / an asset
- A problem or issue
- An important destination
- Place to focus investment

LINE Information Received

- A new BIKING route
- A new WALKING route

Individual comments and final results obtained from the plan's WIKIMAPPING tool.



TYPE: Place to focus investment

Date created: 2020-11-20 21:21:32

Data feature 406448

Comment received:

Future 16th St E

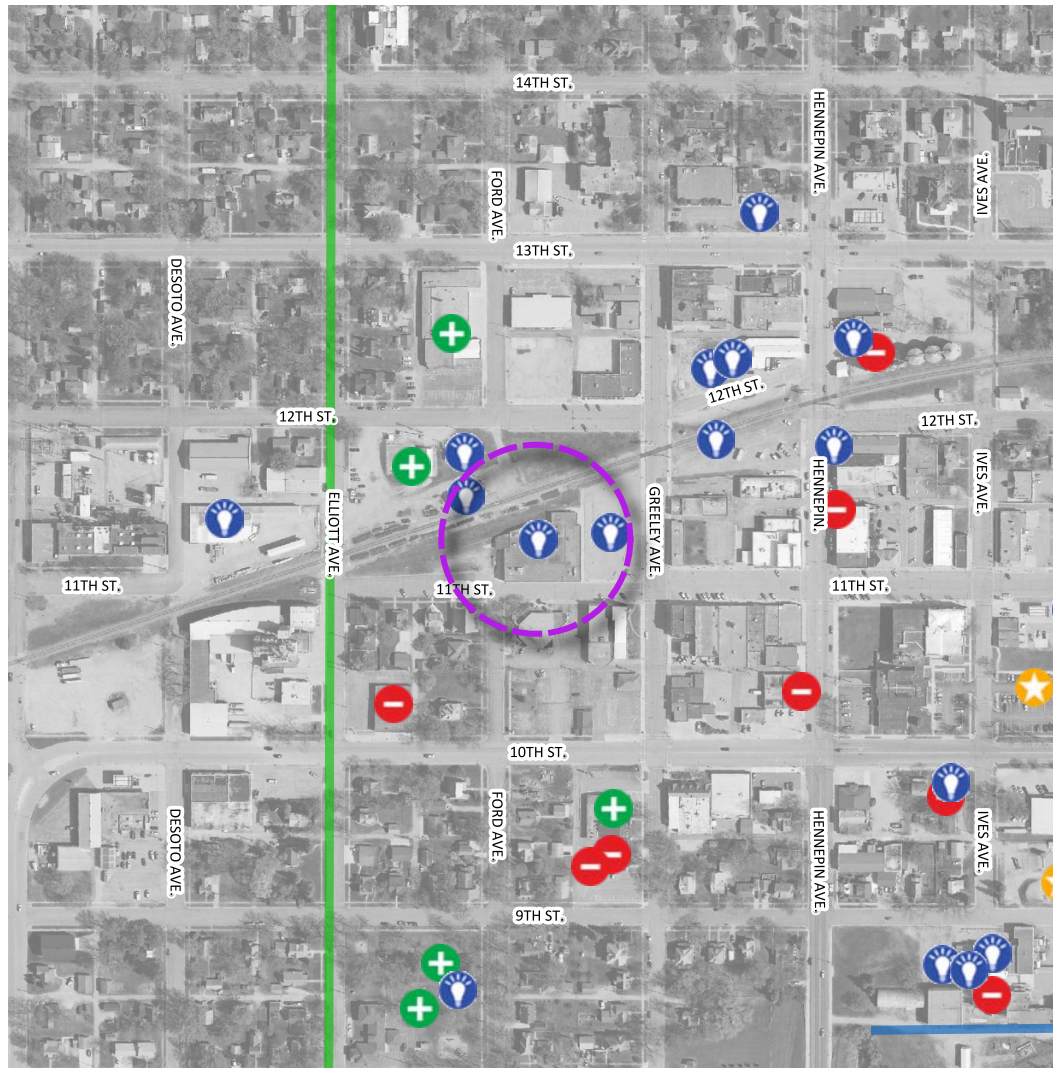
Legend

POINT Information Received	LINE Information Received
A good place / an asset	A new BIKING route
A problem or issue	A new WALKING route
An important destination	
Place to focus investment	

City of Glencoe Comprehensive Plan

Place to focus investment

Individual comments and final results obtained from the plan's WIKIMAPPING tool.



TYPE: Place to focus investment

Date created: 2020-11-30 16:50:37

Data feature 406750

Comment received:

New retail store(s) or downtown park/concert venue.

Legend

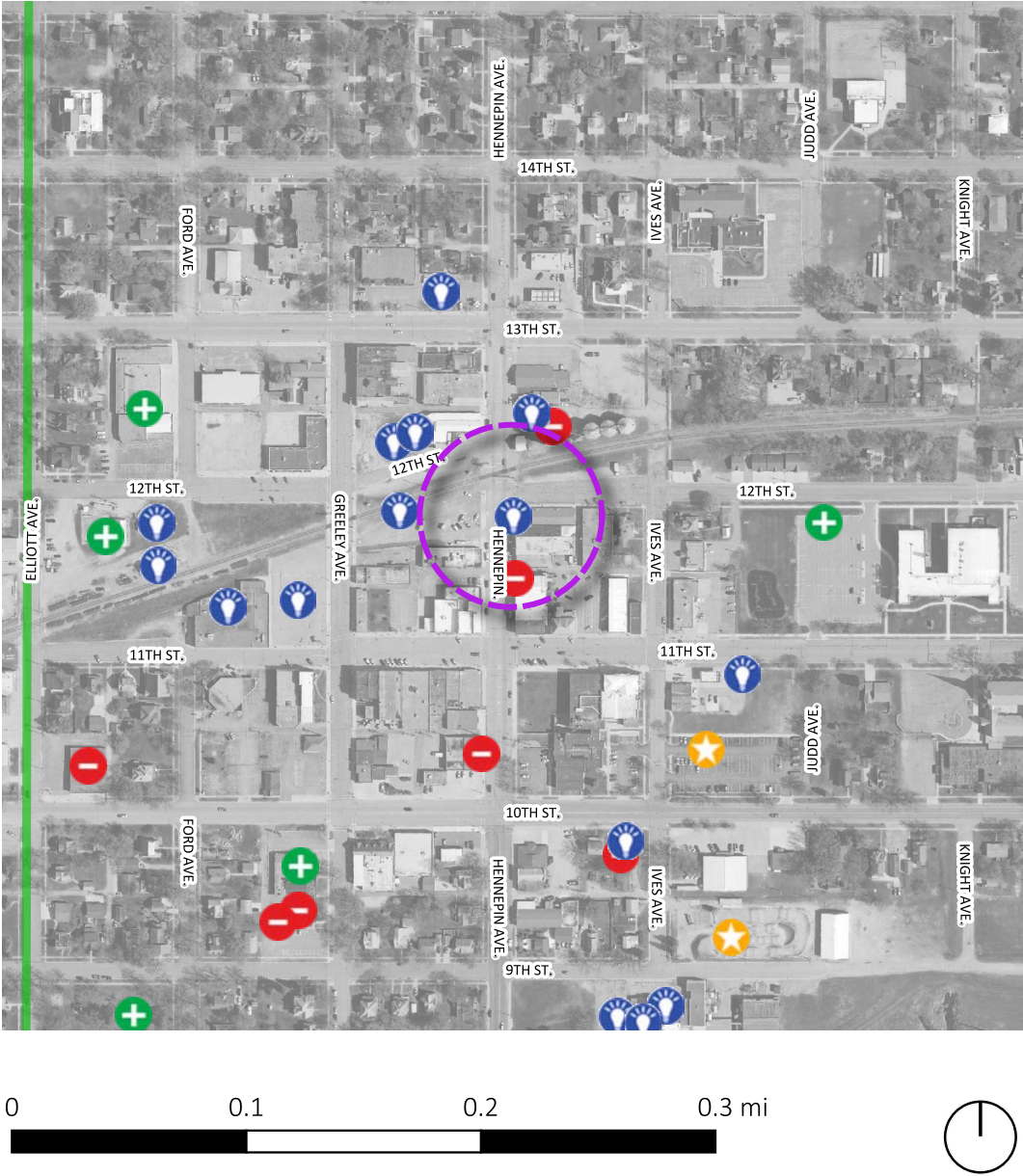
POINT Information Received

- A good place / an asset
- A problem or issue
- An important destination
- Place to focus investment

LINE Information Received

- A new BIKING route
- A new WALKING route

Individual comments and final results obtained from the plan's WIKIMAPPING tool.



TYPE: Place to focus investment

Date created: 2020-11-30 16:53:07

Data feature 406751

Comment received:

Space available for a small retail store.

Legend

POINT Information Received	LINE Information Received
A good place / an asset	A new BIKING route
A problem or issue	A new WALKING route
An important destination	
Place to focus investment	

City of Glencoe Comprehensive Plan

Place to focus investment

Individual comments and final results obtained from the plan's WIKIMAPPING tool.



TYPE: Place to focus investment

Date created: 2020-11-23 17:15:06
Data feature 406507

Comment received:
The entire area on either or both sides of Hwy 22 from Miller Mfg to Glen Knoll Ave is perfect for retail/commercial development.

Legend

POINT Information Received

+

A good place / an asset

-

A problem or issue

★

An important destination

💡

Place to focus investment

LINE Information Received

A new BIKING route

A new WALKING route

Wikimap - FINAL REPORT

73

Individual comments and final results obtained from the plan's WIKIMAPPING tool.



TYPE: Place to focus investment

Date created: 2020-11-30 17:08:12

Data feature 406753

Comment received:

New Google headquarters here.

Legend

POINT Information Received	LINE Information Received
A good place / an asset	A new BIKING route
A problem or issue	A new WALKING route
An important destination	
Place to focus investment	

Individual comments and final results obtained from the plan's WIKIMAPPING tool.



TYPE: Place to focus investment

Date created: 2020-11-25 17:09:25

Data feature 406575

Comment received:

Future 11th St E continue to the east

Legend

POINT Information Received

+

A good place / an asset

-

A problem or issue

★

An important destination

💡

Place to focus investment

LINE Information Received

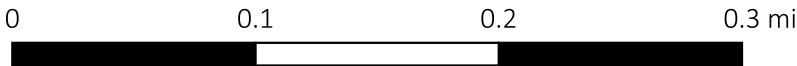
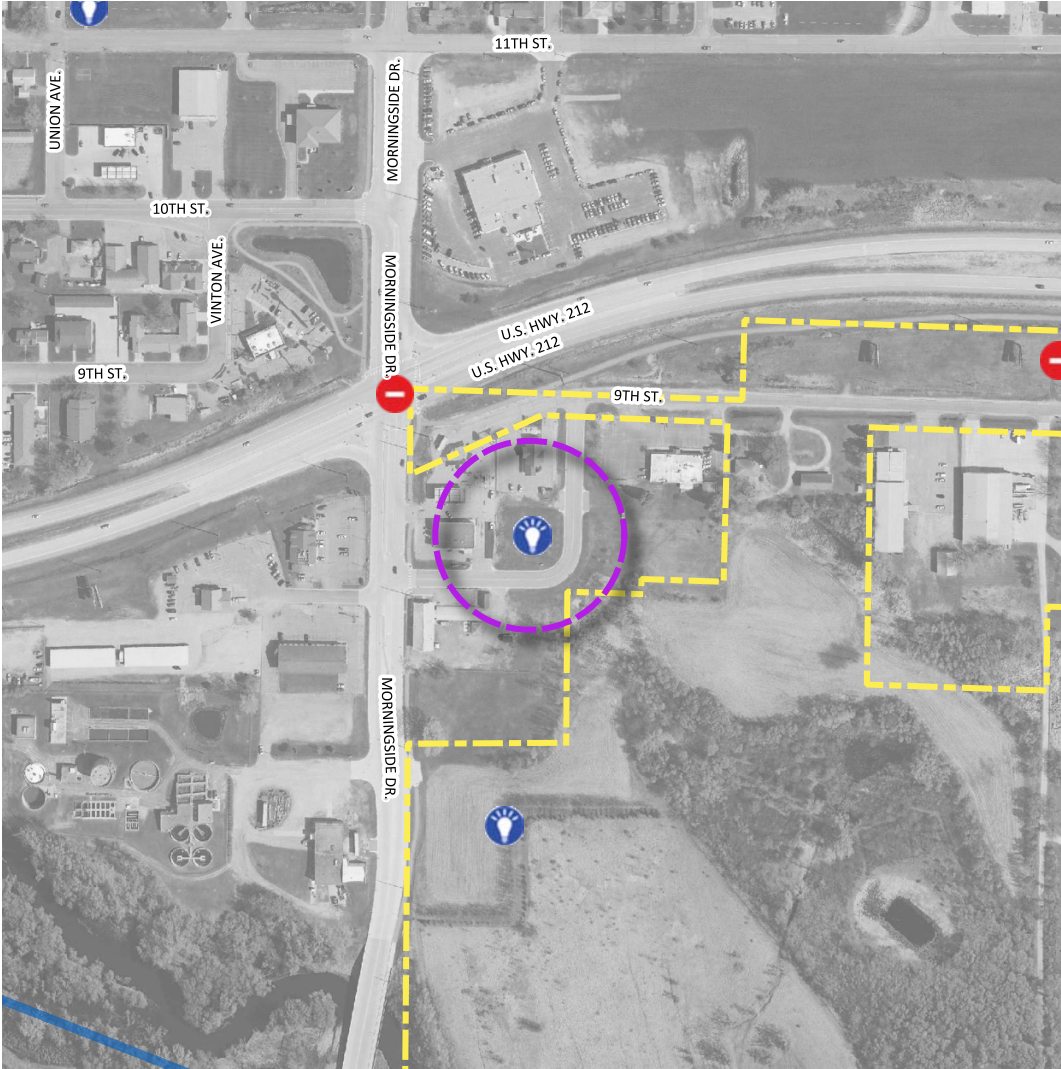
—

A new BIKING route

—

A new WALKING route

Individual comments and final results obtained from the plan's WIKIMAPPING tool.



TYPE: Place to focus investment

Date created: 2020-11-30 17:31:32

Data feature 406755

Comment received:

Infill development?

Legend

POINT Information Received

+

A good place / an asset

-

A problem or issue

★

An important destination

💡

Place to focus investment

LINE Information Received

—

A new BIKING route

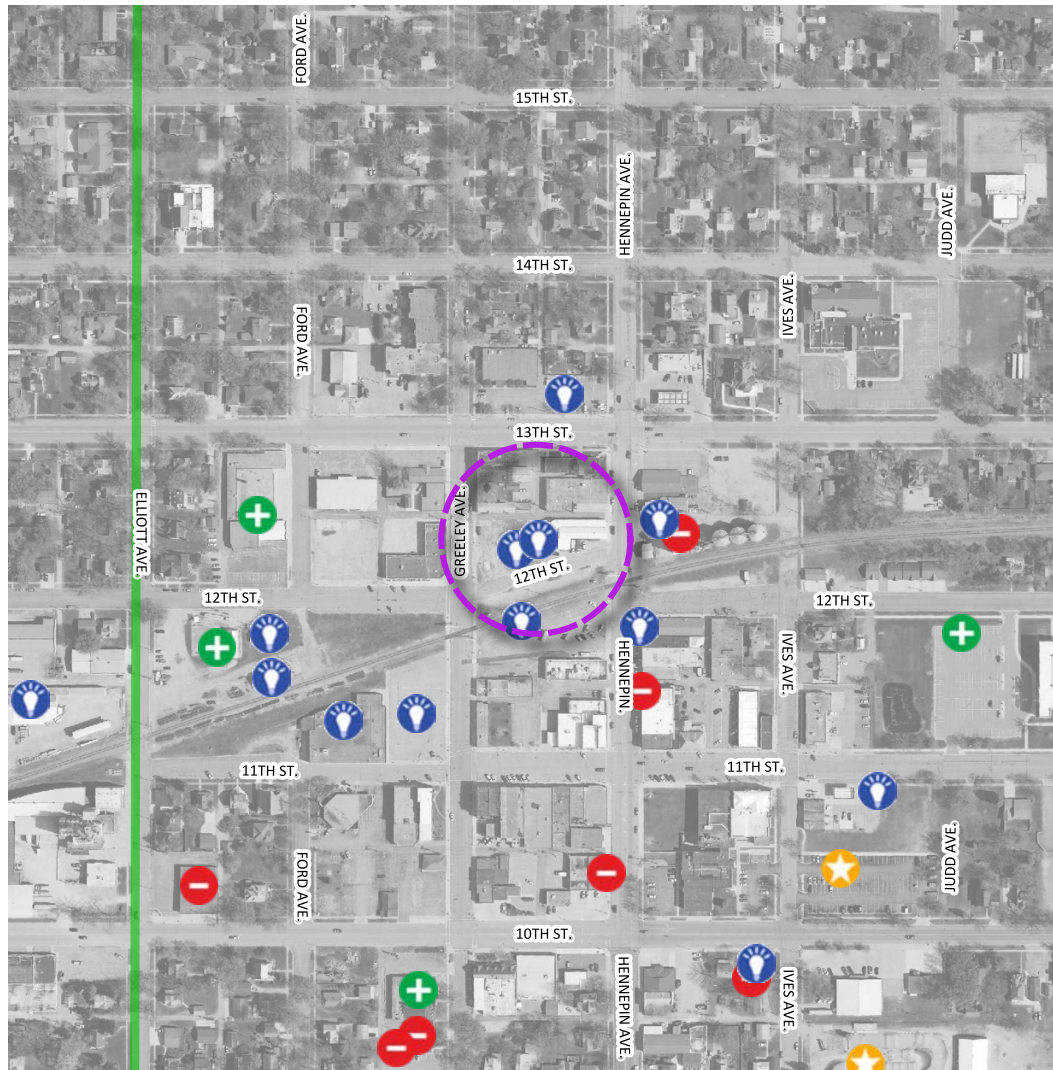
—

A new WALKING route

City of Glencoe Comprehensive Plan

Place to focus investment

Individual comments and final results obtained from the plan's WIKIMAPPING tool.



0 0.1 0.2 0.3 mi



TYPE: Place to focus investment

Date created: 2020-11-25 16:21:35

Data feature 406568

Comment received:

Yes!

Legend

POINT Information Received

- A good place / an asset
- A problem or issue
- An important destination
- Place to focus investment

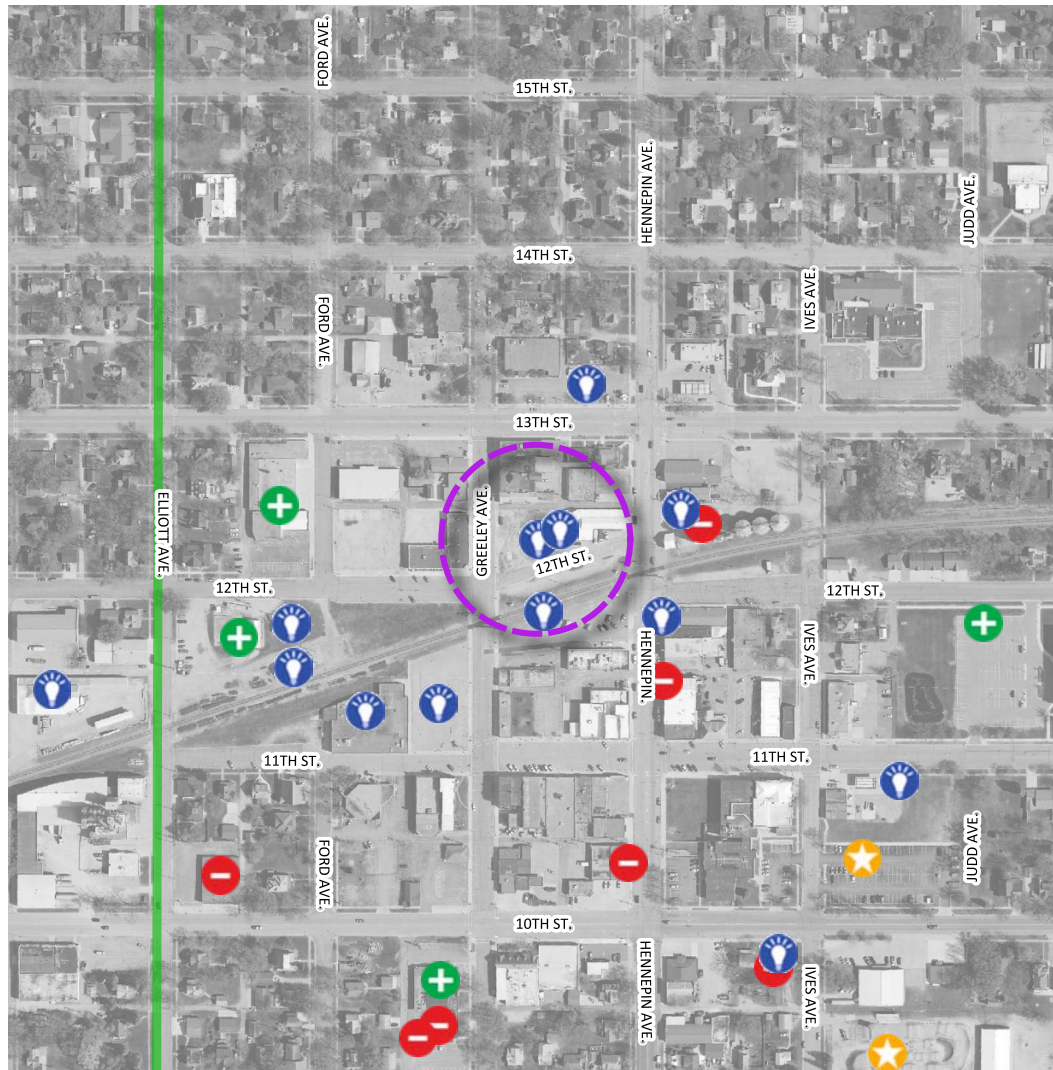
LINE Information Received

- A new BIKING route
- A new WALKING route

City of Glencoe Comprehensive Plan

Place to focus investment

Individual comments and final results obtained from the plan's WIKIMAPPING tool.



0 0.1 0.2 0.3 mi



TYPE: Place to focus investment

Date created: 2020-11-25 02:48:58

Data feature 406542

Comment received:

Convert old Mabel and Daves into Malt Shop eatery.

Legend

POINT Information Received

- A good place / an asset
- A problem or issue
- An important destination
- Place to focus investment

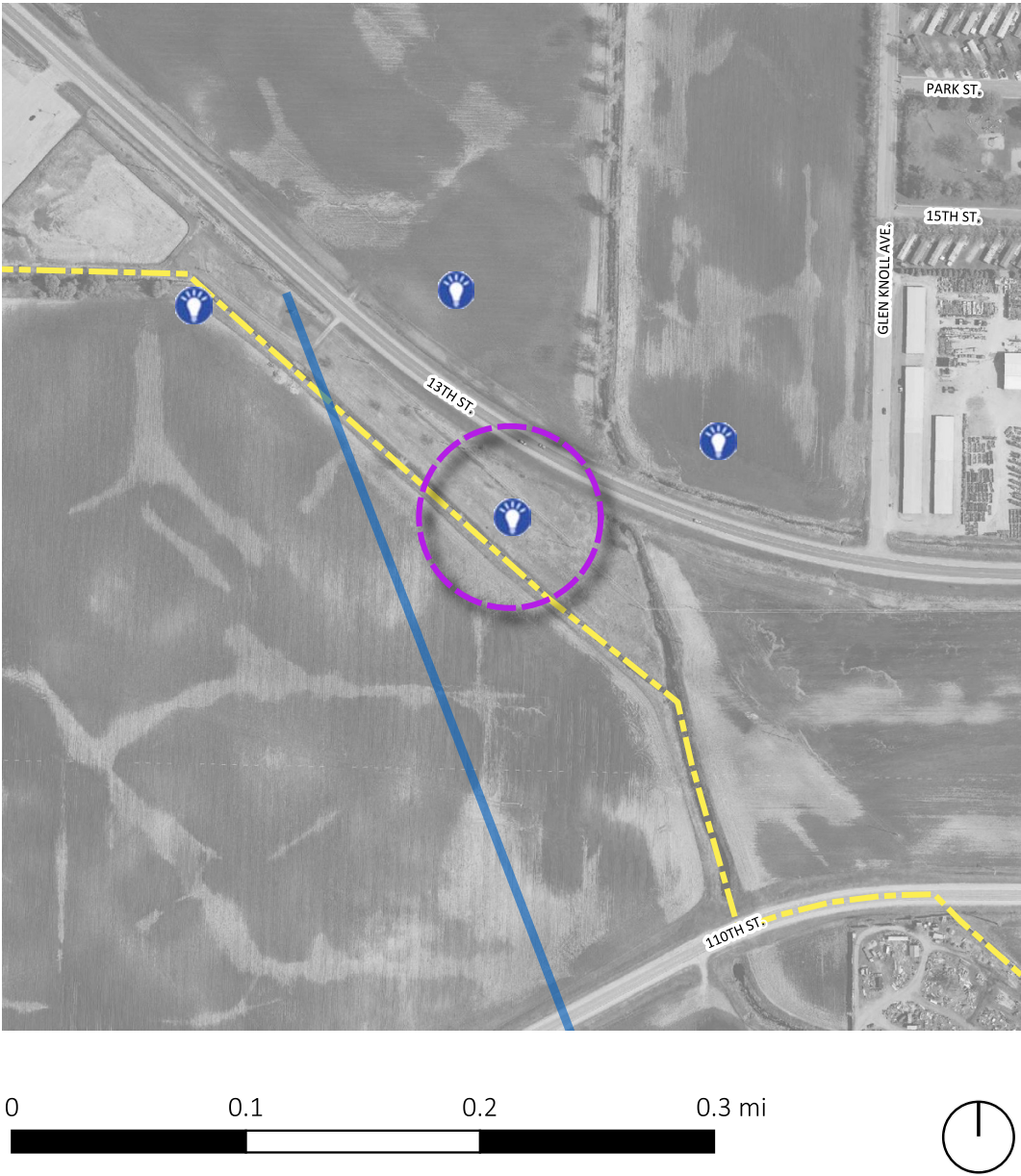
LINE Information Received

- A new BIKING route
- A new WALKING route

City of Glencoe Comprehensive Plan

Place to focus investment

Individual comments and final results obtained from the plan's WIKIMAPPING tool.



TYPE: Place to focus investment

Date created: 2020-11-23 17:15:24
Data feature 406508

Comment received:
The entire area on either or both sides of Hwy 22 from Miller Mfg to Glen Knoll Ave is perfect for retail/commercial development.

Legend

POINT Information Received

+

A good place / an asset

-

A problem or issue

★

An important destination

💡

Place to focus investment

LINE Information Received

A new BIKING route

A new WALKING route

Wikimap - FINAL REPORT

79

City of Glencoe Comprehensive Plan

Place to focus investment

Individual comments and final results obtained from the plan's WIKIMAPPING tool.



TYPE: Place to focus investment

Date created: 2020-12-02 17:19:12

Data feature 406813

Comment received:

Residential expansion. It is weird to drive down 16th St and see corn growing in the city.

Legend

POINT Information Received	LINE Information Received
A good place / an asset	A new BIKING route
A problem or issue	A new WALKING route
An important destination	
Place to focus investment	

City of Glencoe Comprehensive Plan

Place to focus investment

Individual comments and final results obtained from the plan's WIKIMAPPING tool.



0 0.1 0.2 0.3 mi



TYPE: Place to focus investment

Date created: 2020-12-02 17:19:35





Data feature 406814

Comment received:



Residential expansion.

Legend

POINT Information Received

-  A good place / an asset
-  A problem or issue
-  An important destination
-  Place to focus investment

LINE Information Received

-  A new BIKING route
-  A new WALKING route

City of Glencoe Comprehensive Plan

Individual comments and final results obtained from the plan's WIKIMAPPING tool.

Place to focus investment



0 0.1 0.2 0.3 mi



TYPE: Place to focus investment

Date created: 2020-12-02 17:19:53

Data feature 406815

Comment received:

Residential expansion.

Legend

POINT Information Received

- A good place / an asset
- A problem or issue
- An important destination
- Place to focus investment

LINE Information Received

- A new BIKING route
- A new WALKING route

City of Glencoe Comprehensive Plan

Individual comments and final results obtained from the plan's WIKIMAPPING tool.

Place to focus investment



TYPE: Place to focus investment

Date created: 2020-12-02 17:20:20





Data feature 406816

Comment received:



Residential expansion.

Legend

POINT Information Received

-  A good place / an asset
-  A problem or issue
-  An important destination
-  Place to focus investment

LINE Information Received

-  A new BIKING route
-  A new WALKING route

City of Glencoe Comprehensive Plan

Individual comments and final results obtained from the plan's WIKIMAPPING tool.

Place to focus investment



TYPE: Place to focus investment

Date created: 2020-12-02 17:21:13

Data feature 406817

Comment received:

Residential expansion.

Legend

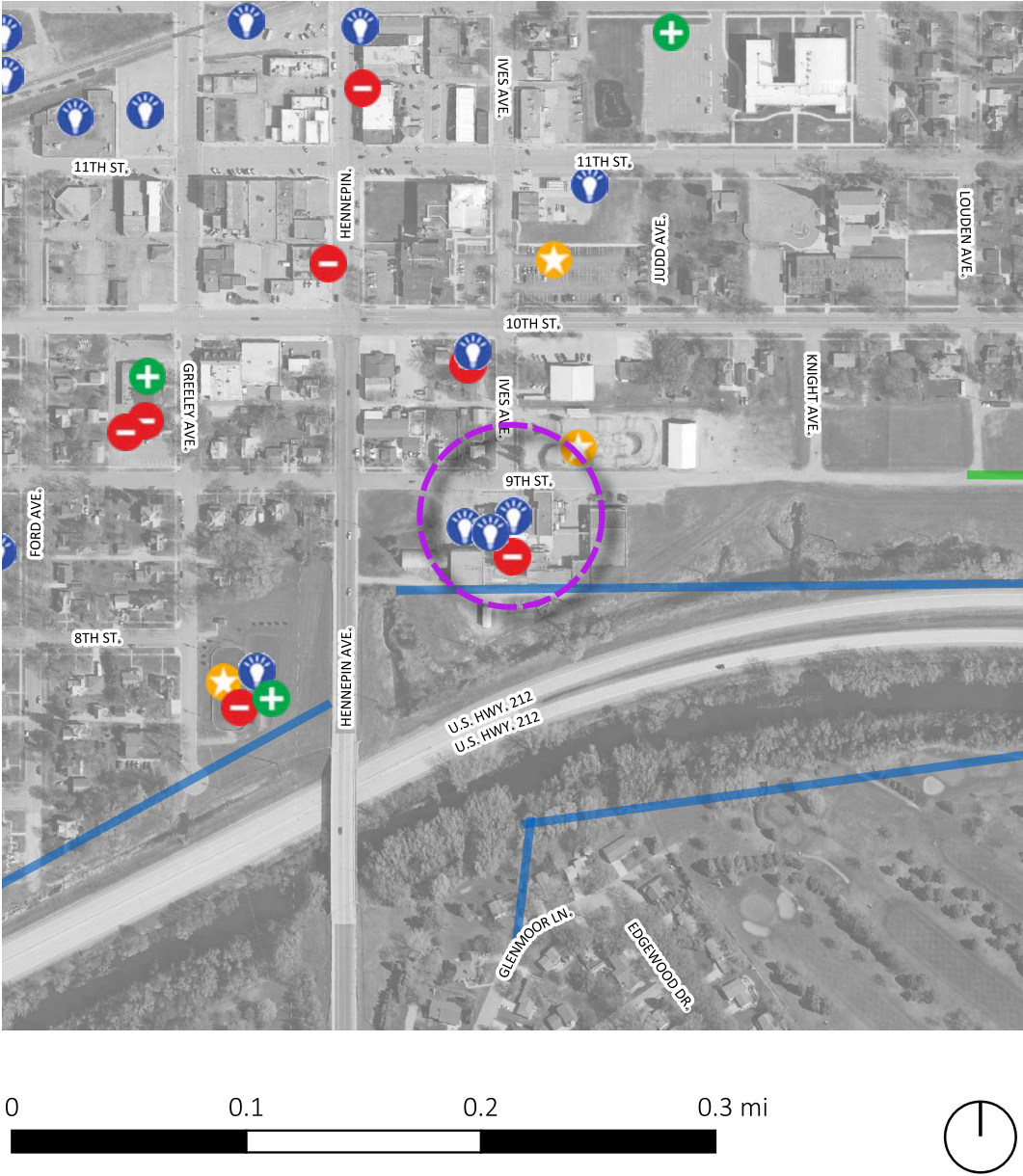
POINT Information Received

- A good place / an asset
- A problem or issue
- An important destination
- Place to focus investment

LINE Information Received

- A new BIKING route
- A new WALKING route

Individual comments and final results obtained from the plan's WIKIMAPPING tool.



TYPE: Place to focus investment

Date created: 2020-12-04 16:33:18
Data feature 406868

Comment received:
Brainstorm ideas for using this historic building by preserving the building shell. The roof could be open trusses, cement floor, creating a marketable destination space for a farmers market, family reunion picnics, basketball hoops, pickleball, or possibly the splash pad inside.

Legend

POINT Information Received

+

A good place / an asset

-

A problem or issue

★

An important destination

💡

Place to focus investment

LINE Information Received

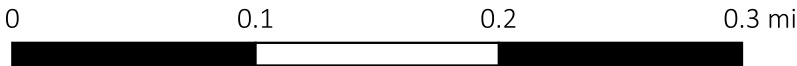
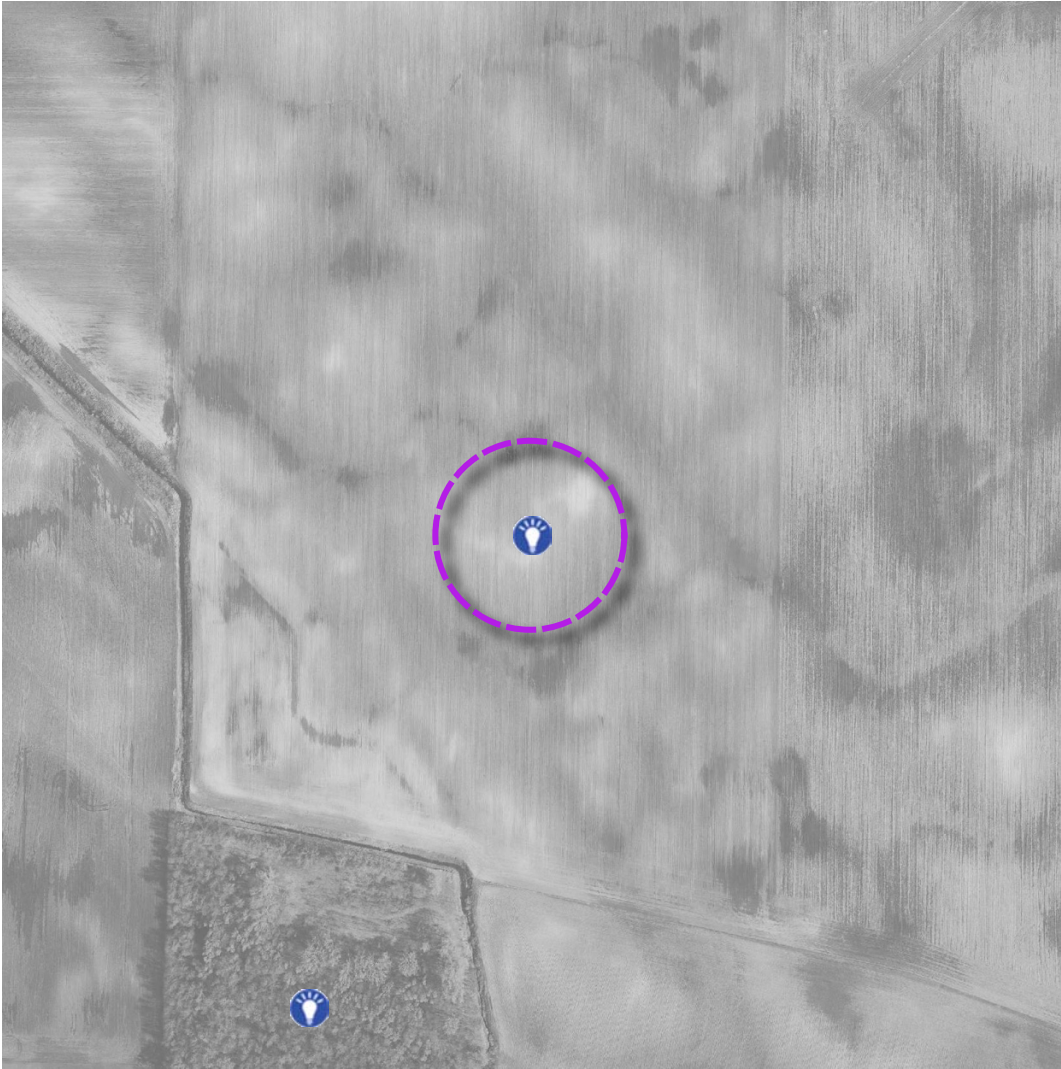
—

A new BIKING route

—

A new WALKING route

Individual comments and final results obtained from the plan's WIKIMAPPING tool.



TYPE: Place to focus investment

Date created: 2020-12-08 19:19:57

Data feature 406921

Comment received:

Bring back Heat in the Street or other outdoor music festivals
Stage and parking area in surrounding fields. Work with land owner to rent the land. Add RV and tent rentals to wooded area without disturbing any of the trees. Result brings revenue, people and culture back to Glencoe.

Legend

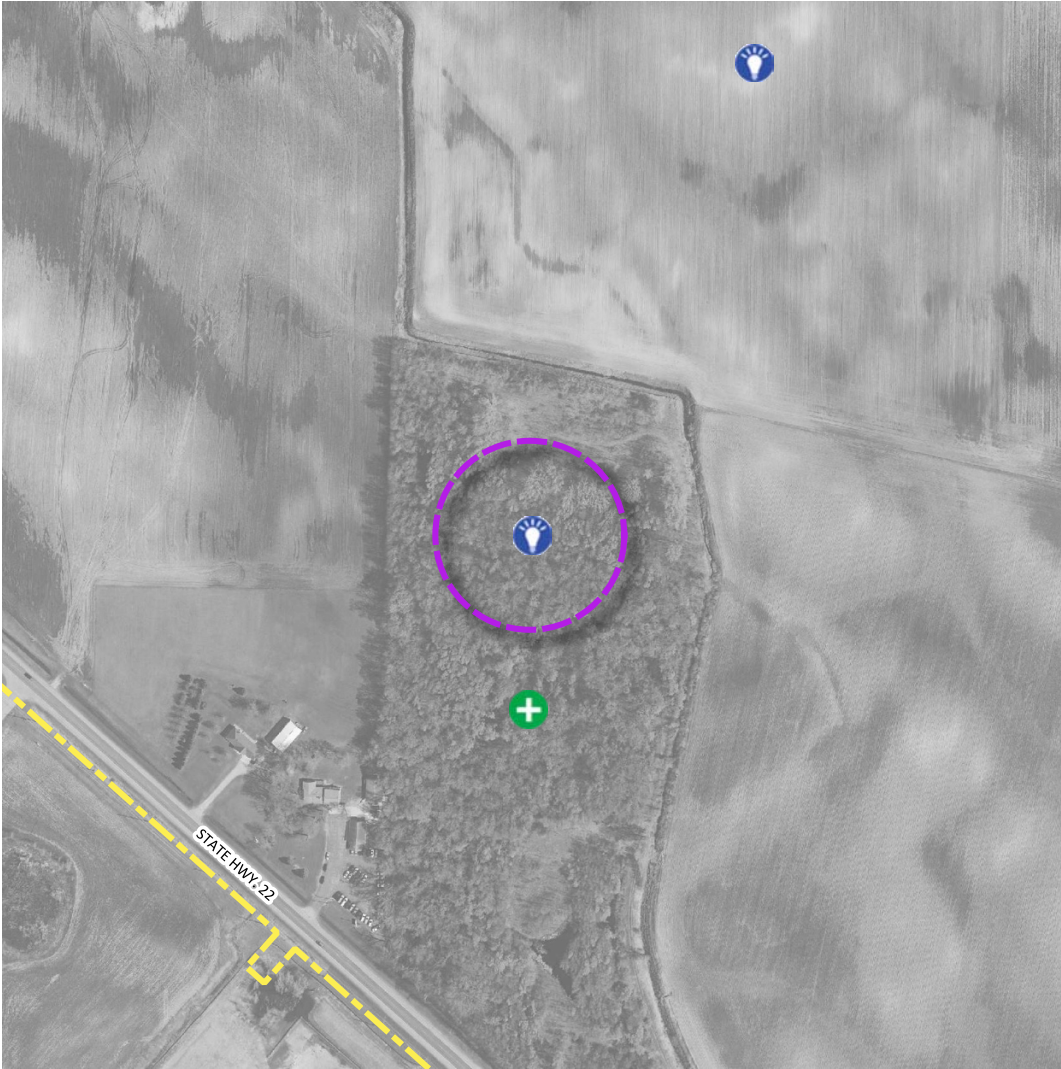
POINT Information Received

- A good place / an asset
- A problem or issue
- An important destination
- Place to focus investment

LINE Information Received

- A new BIKING route
- A new WALKING route

Individual comments and final results obtained from the plan's WIKIMAPPING tool.



TYPE: Place to focus investment

Date created: 2020-12-08 19:21:01

Data feature 406922

Comment received:

Event Idea - RV space rentals

Legend

POINT Information Received

+

A good place / an asset

-

A problem or issue

★

An important destination

💡

Place to focus investment

LINE Information Received

A new BIKING route

A new WALKING route

Wikimap - FINAL REPORT

87

City of Glencoe Comprehensive Plan

Place to focus investment

Individual comments and final results obtained from the plan's WIKIMAPPING tool.



TYPE: Place to focus investment

Date created: 2020-12-17 11:02:52

Data feature 407249

Comment received:

Develop east before infrastructure skyrockets more than it already has

Legend

POINT Information Received	LINE Information Received
A good place / an asset	A new BIKING route
A problem or issue	A new WALKING route
An important destination	
Place to focus investment	

City of Glencoe Comprehensive Plan

Individual comments and final results obtained from the plan's WIKIMAPPING tool.

Place to focus investment



TYPE: Place to focus investment

Date created: 2020-11-23 17:15:39

Data feature 406509

Comment received:

The entire area on either or both sides of Hwy 22 from Miller Mfg to Glen Knoll Ave is perfect for retail/commercial development.

Legend

POINT Information Received

- A good place / an asset
- A problem or issue
- An important destination
- Place to focus investment

LINE Information Received

- A new BIKING route
- A new WALKING route

City of Glencoe Comprehensive Plan

Place to focus investment

Individual comments and final results obtained from the plan's WIKIMAPPING tool.



TYPE: Place to focus investment

Date created: 2021-01-14 16:29:05

Data feature 407764

Comment received:

Need to get a developer to expand this neighborhood. Lots are all almost built out. If no buildable lots in town, people will go elsewhere.

Legend

POINT Information Received	LINE Information Received
A good place / an asset	A new BIKING route
A problem or issue	A new WALKING route
An important destination	
Place to focus investment	

Individual comments and final results obtained from the plan's WIKIMAPPING tool.



TYPE: Place to focus investment

Date created: 2021-01-14 16:34:39

Data feature 407808

Comment received:

New Morningside corridor could open up a great space here for more multi unit housing opportunities.

Legend

POINT Information Received

+

A good place / an asset

-

A problem or issue

★

An important destination

💡

Place to focus investment

LINE Information Received

A new BIKING route

A new WALKING route

Individual comments and final results obtained from the plan's WIKIMAPPING tool.



TYPE: Place to focus investment

Date created: 2021-01-14 16:34:56

Data feature 407809

Comment received:

New Morningside corridor could open up a great space here for more multi unit housing opportunities.

Legend

POINT Information Received

+

A good place / an asset

-

A problem or issue

★

An important destination

💡

Place to focus investment

LINE Information Received

A new BIKING route

A new WALKING route

Wikimap - FINAL REPORT

92

Individual comments and final results obtained from the plan's WIKIMAPPING tool.



TYPE: Place to focus investment

Date created: 2020-11-20 21:14:54

Data feature 406443

Comment received:

Food Franchise

Legend

POINT Information Received	LINE Information Received
A good place / an asset	A new BIKING route
A problem or issue	A new WALKING route
An important destination	
Place to focus investment	

Individual comments and final results obtained from the plan's WIKIMAPPING tool.



TYPE: Place to focus investment

Date created: 2020-11-20 21:14:32

Data feature 406442

Comment received:

Hotel

Legend

POINT Information Received	LINE Information Received
A good place / an asset	A new BIKING route
A problem or issue	A new WALKING route
An important destination	
Place to focus investment	

City of Glencoe Comprehensive Plan

Place to focus investment

Individual comments and final results obtained from the plan's WIKIMAPPING tool.



TYPE: Place to focus investment

Date created: 2021-01-19 22:52:34

Data feature 407893

Comment received:

Residential homes

Legend

POINT Information Received

+

A good place / an asset

-

A problem or issue

★

An important destination

💡

Place to focus investment

LINE Information Received

A new BIKING route

A new WALKING route

Wikimap - FINAL REPORT

95

Individual comments and final results obtained from the plan's WIKIMAPPING tool.



TYPE: Place to focus investment

Date created: 2021-01-19 22:53:18

Data feature 407894

Comment received:

Residential development

Legend

POINT Information Received

+

A good place / an asset

-

A problem or issue

★

An important destination

💡

Place to focus investment

LINE Information Received

A new BIKING route

A new WALKING route

Wikimap - FINAL REPORT

96

Individual comments and final results obtained from the plan's WIKIMAPPING tool.



TYPE: Place to focus investment

Date created: 2020-11-25 02:42:59

Data feature 406539

Comment received:

Retail Site

Legend

POINT Information Received

+

A good place / an asset

-

A problem or issue

★

An important destination

💡

Place to focus investment

LINE Information Received

A new BIKING route

A new WALKING route

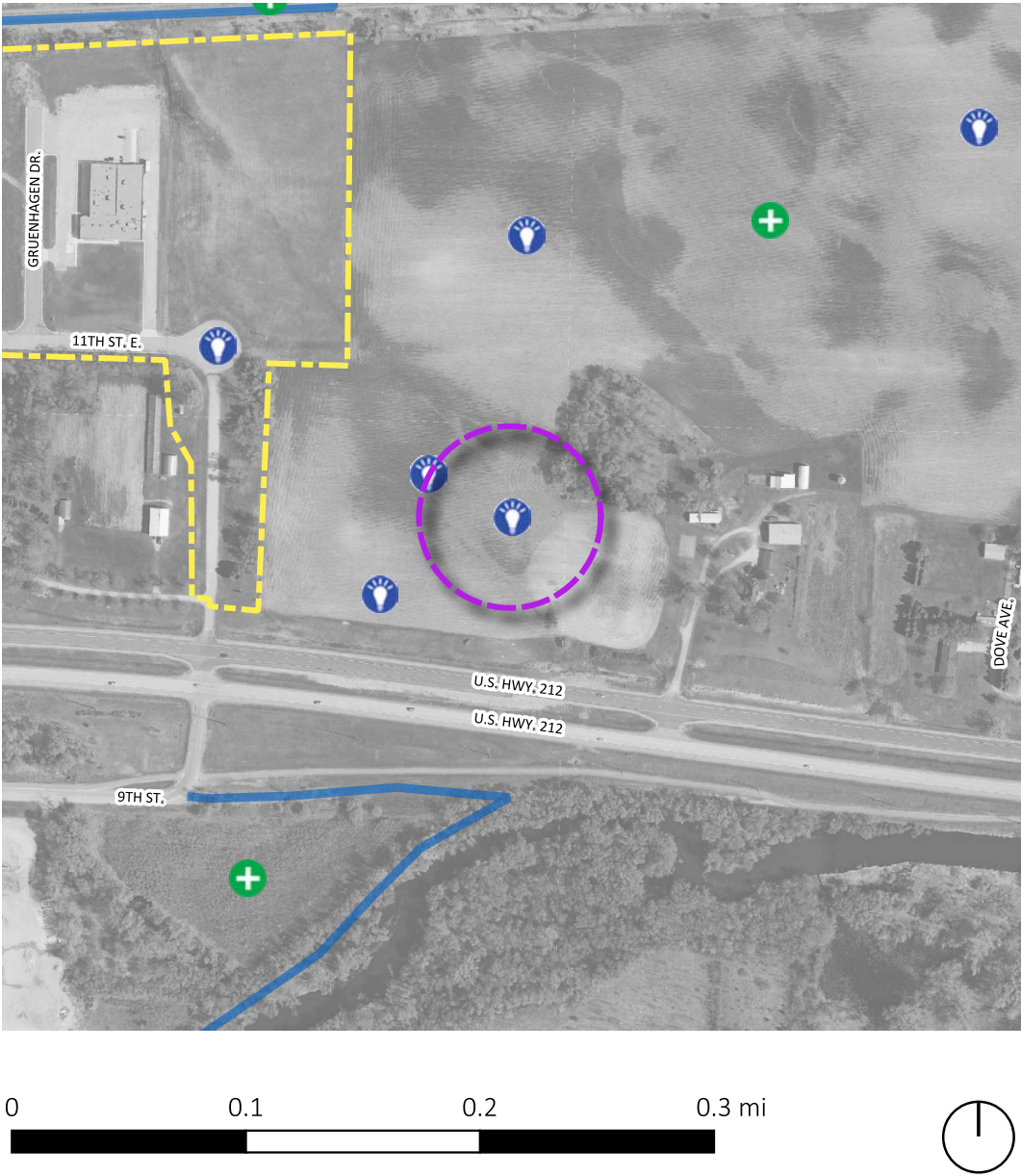
Wikimap - FINAL REPORT

97

City of Glencoe Comprehensive Plan

Place to focus investment

Individual comments and final results obtained from the plan's WIKIMAPPING tool.



TYPE: Place to focus investment

Date created: 2021-01-19 22:55:07

Data feature 407896

Comment received:

Industry/restaurants

Legend

POINT Information Received

+

A good place / an asset

-

A problem or issue

★

An important destination

💡

Place to focus investment

LINE Information Received

A new BIKING route

A new WALKING route

Wikimap - FINAL REPORT

98

City of Glencoe Comprehensive Plan

Place to focus investment

Individual comments and final results obtained from the plan's WIKIMAPPING tool.



TYPE: Place to focus investment

Date created: 2021-01-27 15:22:36

Data feature 408155

Comment received:

Kayak Launch

Legend

POINT Information Received

+

A good place / an asset

-

A problem or issue

★

An important destination

💡

Place to focus investment

LINE Information Received

A new BIKING route

A new WALKING route

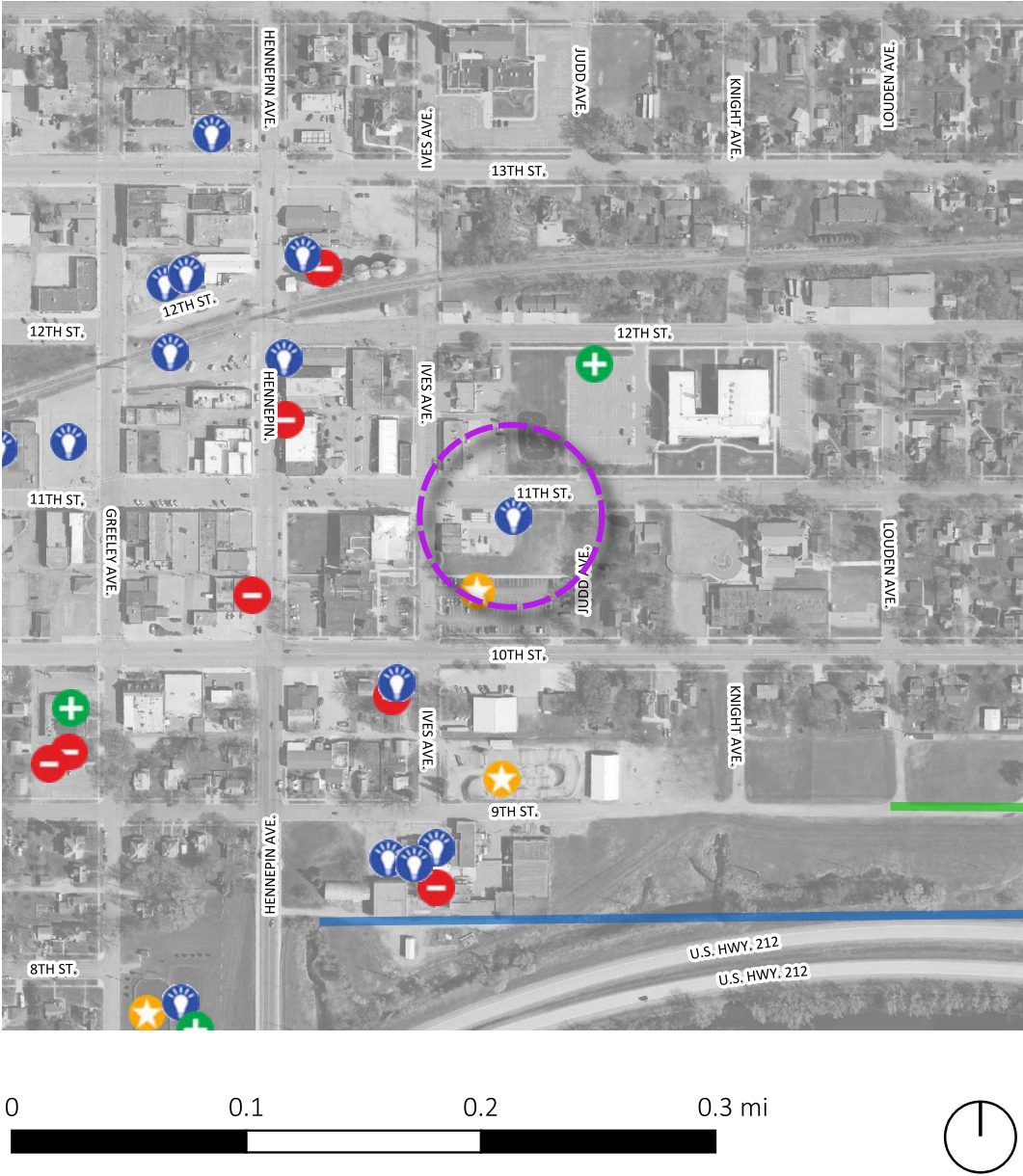
Wikimap - FINAL REPORT

99

City of Glencoe Comprehensive Plan

Place to focus investment

Individual comments and final results obtained from the plan's WIKIMAPPING tool.



TYPE: Place to focus investment

Date created: 2021-01-30 14:48:03

Data feature 408315

Comment received:

Purchase county lots for city development

Legend

POINT Information Received

+

A good place / an asset

-

A problem or issue

★

An important destination

💡

Place to focus investment

LINE Information Received

—

A new BIKING route

—

A new WALKING route